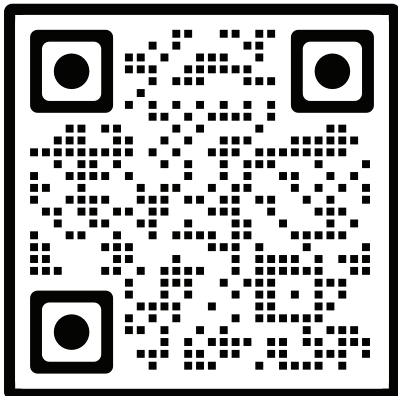


2023-24
**STUDENT HANDBOOK
AND PLANNER**



SPC St. Petersburg
College



Scan the QR code for more info on Titans Care Center programs.

SPC is here to help you navigate student life and offers several resources to keep you safe, healthy, and ready to succeed. Visit one of our **Titans Care Centers** to find assistance tailored to your needs.

Child Care Assistance – The Child Care Access Means Parents in School (CCAMPIS) program offers high-quality, affordable child care to SPC students who are parents.

Community Resources for Life – Check out our list of external resources available for specific issues.

Counseling Services – SPC partners with local and national providers for telemental health and face-to-face services to ensure students have access to whole health and wellness.

Food Pantry – Visit a campus food pantry and show your student ID card for snacks and groceries.

Free Bus Rides – Students can ride Pinellas Suncoast Transit Authority (PSTA) buses for free with a student ID.

Student Support Programs – With programs like Brother to Brother, CROP, Summer of Success, Veterans Services, or Women on the Way, students can find support to help ensure their success both in and outside of academic life.

Technology Lending Program – Students in Pinellas County can borrow a laptop for SPC coursework.

St. Petersburg College

SPC**This handbook belongs to:** _____

Phone _____

Email _____

This Student Handbook is intended to enhance your college experience by providing a variety of information and resources available to help you succeed.

We make it easy for you to keep up with important information by posting events, college closings, website alerts, and deadlines both around campus and online. Make sure to:

- **Get TITAN CONNECT** – Download SPC's event and resource app by searching for Modern Campus Presence on your mobile device, or visit titanconnect.spcollege.edu.
- **Bookmark spcollege.edu/AcademicCalendar**

While this handbook contains many of SPC's policies, for a complete listing of the SPC Board of Trustees Rules and College Procedures, visit spcollege.edu/BOTRules.

MISSION STATEMENT

*Empower our students and community
to achieve success and economic mobility through
academic excellence and engagement*



© 2023-24 St. Petersburg College. All rights reserved. Information and college policy outlined in this Student Handbook and Planner is subject to change.

| | | | |
|---|-------|---|-------|
| Mission and Vision Statement | 1 | Library..... | 19 |
| Why Choose SPC? | 3 | Lost and Found..... | 19-20 |
| Degree and Training Information | 4-5 | Registration - <i>See Advising</i> | 20 |
| Academic Calendar* | 7-9 | Security | 20 |
| Campus Locations and Leadership | 10-11 | Student Life and Leadership..... | 20 |
| Contact Info - Career & Academic Communities | | Student Lounges..... | 20 |
| Arts, Humanities, and Design..... | 12 | Student Photo ID..... | 21 |
| Business..... | 12 | Student Support Resources..... | 21 |
| Communications | 12 | Testing..... | 21 |
| Education..... | 12 | Titan Connect - <i>Event App</i> | 21 |
| Engineering, Manufacturing, and | | Transcripts - <i>See Admissions and Records</i> | 22 |
| Building Arts..... | 12 | University Partnership Center..... | 22 |
| Health Sciences and Veterinary | | Veterans Services..... | 22 |
| Technology..... | 12-13 | Women on the Way..... | 22 |
| Public Safety, Public Policy, Ethics, | | Workforce Education | 22 |
| and Legal Studies..... | 13 | | |
| Science and Mathematics..... | 13 | Campus Maps | |
| Social and Behavioral Sciences and | | Allstate Center..... | 23 |
| Human Services..... | 13 | Caruth Health Education Center..... | 24 |
| Technology | 13 | Clearwater Campus | 25 |
| Contact Info - College Administration | | Downtown Center | 26 |
| Accessibility Services..... | 14 | EpiCenter..... | 27 |
| Admissions and Records..... | 14-15 | Midtown Center | 28-29 |
| Advising - <i>Career and Academic Advising</i> | 15 | Seminole Campus | 30 |
| Athletics..... | 15 | St. Petersburg/Gibbs Campus | 31 |
| Bookstore - Barnes & Noble..... | 15 | Tarpon Springs Campus..... | 32 |
| Business Office..... | 15-16 | Veteran Technology Center..... | 33 |
| Career Services | 16 | Important Student Information | |
| Emergency Management | 16 | Academics | 34-39 |
| Financial Aid | 16-17 | Registration..... | 40 |
| Food Services..... | 17 | Student Life..... | 41 |
| High School Programs..... | 17-18 | Student Services..... | 42-44 |
| Honors Programs | 18 | Financial Aid | 45-46 |
| International Programs..... | 18 | Student Right-to-Know..... | 47-51 |
| Learning Resources | 18-19 | Student Planner | 53 |

*Calendar subject to change. For an updated calendar, visit spcollege.edu/calendar.

The Board of Trustees of St. Petersburg College affirms its equal opportunity policy in accordance with the provisions of the Florida Educational Equity Act and all other relevant state and federal laws, rules, and regulations. The college will not discriminate on the basis of race, color, ethnicity, religion, sex, age, national origin, marital status, pregnancy, sexual orientation, gender identity, genetic information, or against any qualified individual with disabilities in its employment practices or in the admission and treatment of students. Recognizing that sexual harassment constitutes discrimination on the basis of sex and violates this Rule, the college will not tolerate such conduct. Should you experience such behavior, please contact Dr. Devona Pierre, Executive Director, Organizational Culture and Engagement/Title IX Coordinator, at 727-341-3261; by mail at P.O. Box 13489, St. Petersburg, FL 33733-3489; or by email at eao_director@spcollege.edu. To view the Equity report, visit spcollege.edu/TitleIX and click on "Equity Report."

Student Hdbk_3/2023

A MESSAGE FROM THE PRESIDENT

Hello, and welcome to St. Petersburg College, Home of the Titans!
 Congratulations on investing in YOU and taking the next step in your educational journey.

St. Petersburg College is truly a special place where opportunities are endless, hope is never deferred and dreams come true. As a part of the SPC family, you'll receive personalized guidance from our nationally certified advisors and a high-quality education from our first-class faculty. You'll benefit from support services tailored to your needs.

Additionally, we offer a robust menu of career services, including networking events, interview preparations, resume building and internships to help you obtain the career you've always wanted.

Congratulations, again, on becoming a Titan!



Dr. Tonjua Williams, President
 St. Petersburg College

WHY SPC

| | | | | |
|--|--|--|---|--|
|  |  |  |  |  |
| PERSONALIZED SUPPORT | LOW TUITION | FLEXIBLE SCHEDULING | ACCREDITATION | CAREER COUNSELING |

ACCREDITATION

St. Petersburg College is accredited by the Southern Association of Colleges and Schools Commission on Colleges (SACSCOC) to award Bachelor of Science degrees, Bachelor of Applied Science degrees, Associate in Arts degrees, and Associate in Science degrees. St. Petersburg College also may offer credentials such as certificates and diplomas at approved degree levels. Questions about the accreditation of St. Petersburg College may be directed in writing to the Southern Association of Colleges and Schools Commission on Colleges at 1866 Southern Lane, Decatur, GA 30033-4097, by calling (404) 679-4500, or by using information available on SACSCOC's website (www.sacscoc.org).



ABOUT OUR INSTRUCTORS

Of the 1,247 instructional employees, 385 hold doctoral degrees, while 522 have master's degrees and 153 have a master's plus 30 additional credit hours in their discipline.

SCHOOL MASCOT: TITANS

In Greek mythology, the Titans were a family of giants who ruled the Earth. Today, the term Titan represents one who is gigantic in size or power or who stands out for greatness of achievement.

SCHOOL COLORS AND MOTTO

SPC's colors are blue and white, representing the qualities of truth and light. The college's motto, "Lux et Veritas" is Latin for (you guessed it) light and truth.

CAREER + ACADEMIC COMMUNITIES

CAREER + ACADEMIC COMMUNITIES

at St. Petersburg College

Our 10 Career and Academic Communities group similar majors into concentrations so you'll benefit from advisors dedicated solely to your program, a closer connection to experienced faculty, collaboration with like-minded students, and a path toward your chosen profession.

spcollege.edu/degrees-training



DEGREE AND TRAINING PROGRAMS

Certificate (CT) Programs and Continuing Education

Are you looking to get into the workforce quickly, or update your current skills? Check out our certificate programs, many of which take less than a year to complete and give you the skills to excel in your chosen career. Certificate programs are available through either the college's academic communities or our Workforce, Community and Corporate Partnerships division, which also provides other short-term training.

Find an up-to-date listing of certificates and short-term training programs at spcollege.edu/workforce.

For certificate programs offered within the college's Career & Academic Communities, visit spcollege.edu/certificates.



DEGREE AND TRAINING PROGRAMS

spcollege.edu/degrees-training

Associate in Science (A.S.) Degrees

Our Associate in Science degrees are designed to get you into the workforce with a two-year program and are offered in a variety of Career and Academic Communities. A.S. degrees can also be built upon with a B.A.S. degree.



Associate in Arts (A.A.) Degrees

SPC offers an Associate of Arts (A.A.) degree, which can be completed fully online, to pave your way to any number of bachelor's degree programs. A.A. degrees are designed to prepare students planning to obtain a bachelor's degree.



Bachelor's Degrees (B.S., B.A.S.)

SPC offers a variety of bachelor's degree programs, many fully online. A bachelor's degree is the general term for a four-year degree, and generally requires 120 hours of both general education and degree-specific classes.



Bachelor's Degree Transfer Programs

Got your heart set on obtaining your bachelor's degree at a specific state university? Get your A.A. at SPC and take advantage of one of several programs that can get you to the school of your dreams! Whether through the state's 2+2 program that guarantees your admission to one of Florida's 12 state universities, or through one of our partnership transfer programs, we'll help you every step of the way. Visit spcollege.edu/transfer-programs to find out more.



University Partnership Center (UPC)

The UPC offers a variety of degrees not offered by SPC from several fully-accredited colleges and universities, which allows Pinellas County residents to further their education without having to leave the area. Visit spcollege.edu/upc for more information.

NOTES

NOTES

TASKS

- _____
- _____
- _____
- _____
- _____
- _____
- _____
- _____
- _____
- _____
- _____
- _____
- _____
- _____

DON'T FORGET!

Calendar subject to change. For an updated calendar of academic events, visit spcollege.edu/calendar.

| | FALL FULL TERM Aug. 14-Dec. 8 | 1ST 8-WEEK SESSION Aug. 14-Oct. 6 | WEEKEND COLLEGE Aug. 18-Dec. 3 | 12-WEEK EXPRESS SESSION Sept. 11-Dec. 8 | 2ND 8-WEEK SESSION Oct. 9-Dec. 8 |
|---|--|--------------------------------------|-----------------------------------|--|-------------------------------------|
| TERM/SESSION DATES | | | | | |
| First day of term/session | Aug. 14 | Aug. 14 | Aug. 18 | Sept. 11 | Oct. 9 |
| Last day of term/session | Dec. 7 | Oct. 6 | Dec. 3 | Dec. 7 | Dec. 7 |
| ADMISSIONS | | | | | |
| Application deadline for non-health programs, including Bachelor's programs | Admission to programs are aligned to students' first term (or session) at SPC and do not observe specific deadlines. | | | | |
| Health programs admissions deadlines | Dates vary by program. Visit spcollege.edu/health-admissions for details. | | | | |
| International students application deadline | June 1 | June 1 | June 1 | June 1 | June 1 |
| Last day to apply for Study Abroad trips | Dates vary by trip. Visit stpe.co/studyabroad for details. | | | | |
| REGISTRATION | | | | | |
| View classes | April 10 | April 10 | April 10 | April 10 | April 10 |
| View textbook, Gen. Education course syllabi | June 30 | June 30 | June 30 | June 30 | June 30 |
| Special programs registration opens | April 17 | April 17 | April 17 | April 17 | April 17 |
| Registration opens for all students | April 19 | April 19 | April 19 | April 19 | April 19 |
| Senior citizens/state employees | Aug. 11 | Aug. 11 | Aug. 11 | Aug. 11 | Aug. 11 |
| Last day to add a class | Aug. 16 | Aug. 14 | Aug. 23 | Sept. 12 | Oct. 9 |
| TUITION/FINANCIAL AID | | | | | |
| Tuition/Fee payment due | July 12 | July 12 | July 12 | Sept. 1 | Sept. 29 |
| FAFSA priority deadline date | May 1 | May 1 | May 1 | May 1 | May 1 |
| Many funds are awarded on a first-come, first-serve basis, so the earlier you submit your FAFSA, the more funds you could be awarded. | | | | | |
| Payment Plan enrollment deadlines | Visit spcollege.edu/payment-plan for all tuition payment plans. | | | | |
| Financial aid deadlines | Visit spcollege.edu/financial-aid-dates for all financial aid deadlines. | | | | |
| LAST DAY TO DROP, RECEIVE REFUND, AND/OR CHANGE TO AUDIT | | | | | |
| Last Day to Drop With A Refund | Aug. 18 | Aug. 18 | Aug. 25 | Sept. 15 | Oct. 13 |
| LAST DAY TO WITHDRAW *WITH GRADE OF "W" | | | | | |
| Last Day to withdraw with Grade of "W" | Oct. 28 | Sept. 20 | Oct. 27 | Nov. 6 | Nov. 14 |
| LAST DAY TO WITHDRAW *WITH GRADE OF "WF" | | | | | |
| Last Day to withdraw with Grade of "WF" | Dec. 6 | Oct. 5 | Dec. 2 | Dec. 7 | Dec. 7 |
| * FINANCIAL ASSISTANCE RECIPIENTS: | If you completely withdraw from the College anytime on or before the dates of your session, you may incur repayment of Financial Assistance funds. See financial aid withdrawal deadlines. | | | | |
| EXAMS | | | | | |
| Mid-term exams (online) | Oct. 6-8 | | | | |
| Final exams (online) | Dec. 1-3 | | | | |
| Final exams | Dec. 4-7 | | Nov. 30-Dec. 2 | Dec. 4-7 | |
| GRADUATION | | | | | |
| Name in program deadline | TBD | | | | |
| Fall Commencement | TBD | | | | |
| NO CLASSES FOR STUDENTS (ALSO SEE COLLEGE CLOSED DATES BELOW) | | | | | |
| Discovery Day | Oct. 31 | Oct. 31 | Oct. 31 | Oct. 31 | Oct. 31 |
| Winter Break | Dec. 9, 2023 - Jan. 15, 2024 | Dec. 9, 2023 - Jan. 15, 2024 | Dec. 9, 2023 - Jan. 15, 2024 | Dec. 9, 2023 - Jan. 15, 2024 | Dec. 9, 2023 - Jan. 15, 2024 |
| COLLEGE CLOSED | | | | | |
| Labor Day | Sept. 4 | Sept. 4 | Sept. 4 | Sept. 4 | Sept. 4 |
| Veterans Day (observed) | Nov. 10 | Nov. 10 | Nov. 10 | Nov. 10 | Nov. 10 |
| Thanksgiving Break | Nov. 19-25 | Nov. 19-25 | Nov. 19-25 | Nov. 19-25 | Nov. 19-25 |
| Winter Break | Dec. 18, 2023 - Jan. 1, 2024 | Dec. 18, 2023 - Jan. 1, 2024 | Dec. 18, 2023 - Jan. 1, 2024 | Dec. 18, 2023 - Jan. 1, 2024 | Dec. 18, 2023 - Jan. 1, 2024 |
| FACULTY SCHEDULE | | | | | |
| Report for duty | Aug. 10 | Aug. 10 | Aug. 10 | Aug. 10 | Aug. 10 |
| Students may access their classes on MyCourses at the latest by the Friday prior to the first day of classes. | | | | | |
| Discovery Day | Oct. 31 | Oct. 31 | Oct. 31 | Oct. 31 | Oct. 31 |
| Final grades due in PS by 2 p.m. | Dec. 8 | Oct. 6 | Dec. 8 | Dec. 8 | Dec. 8 |
| Last working day | Dec. 8 | Dec. 8 | Dec. 8 | Dec. 8 | Dec. 8 |

WINTER SESSION 2023-24 | SPRING 2024

Calendar subject to change. For an updated calendar of academic events, visit spcollege.edu/calendar.

| | WINTER SESSION Dec. 11, 2023- Jan. 5, 2024 | SPRING FULL TERM Jan. 16-May 10 | 1ST 8-WEEK SESSION Jan.16- March 8 | WEEKEND COLLEGE Jan. 19- May 5 | 12-WEEK EXPRESS SESSION Feb. 12- May10 | 2ND 8-WEEK SESSION March 18- May 10 |
|---|---|------------------------------------|--|--------------------------------------|---|---|
| TERM/SESSION DATES | | | | | | |
| First day of term/session | Dec. 11, 2023 | Jan. 16 | Jan. 16 | Jan. 19 | Feb. 12 | March 18 |
| Last day of term/session | Jan. 5, 2024 | May 10 | March 8 | May 5 | May 10 | May 10 |
| ADMISSIONS | | | | | | |
| Application deadline for non-health programs, including Bachelor's programs | Admission to programs are aligned to students' first term (or session) at SPC and do not observe specific deadlines. | | | | | |
| Health programs admissions deadlines | Dates vary by program. Visit spcollege.edu/health-admissions for details. | | | | | |
| International students application deadline | Oct. 1, 2023 | Oct. 1, 2023 | Oct. 1, 2023 | Oct. 1, 2023 | Oct. 1, 2023 | Oct. 1, 2023 |
| Last day to apply for Study Abroad trips | Dates vary by trip. Visit stpe.co/studyabroad for details. | | | | | |
| REGISTRATION | | | | | | |
| View classes | Oct. 9, 2023 | Oct. 9, 2023 | Oct. 9, 2023 | Oct. 9, 2023 | Oct. 9, 2023 | Oct. 9, 2023 |
| View textbook, Gen. Education course syllabi | Dec. 2, 2023 | Dec. 2, 2023 | Dec. 2, 2023 | Dec. 2, 2023 | Dec. 2, 2023 | Dec. 2, 2023 |
| Special programs registration opens | Oct. 23, 2023 | Oct. 23, 2023 | Oct. 23, 2023 | Oct. 23, 2023 | Oct. 23, 2023 | Oct. 23, 2023 |
| Registration (All sessions) | Oct. 25, 2023 | Oct. 25, 2023 | Oct. 25, 2023 | Oct. 25, 2023 | Oct. 25, 2023 | Oct. 25, 2023 |
| Senior citizens/state employees | Jan. 12 | Jan. 12 | Jan. 12 | Jan. 12 | Jan. 12 | Jan. 12 |
| Last day to add a class | Dec. 11, 2023 | Jan. 18 | Jan. 16 | Jan. 24 | Feb. 13 | March 18 |
| TUITION/FINANCIAL AID | | | | | | |
| Tuition/Fee payment due | Dec. 13, 2023 | Dec. 13, 2023 | Dec. 13, 2023 | Dec. 13, 2023 | Feb. 2 | March 8 |
| FAFSA priority deadline date | Oct. 1, 2023 | Oct. 1, 2023 | Oct. 1, 2023 | Oct. 1, 2023 | Oct. 1, 2023 | Oct. 1, 2023 |
| Many funds are awarded on a first-come, first-serve basis, so the earlier you submit your FAFSA, the more funds you could be awarded. | | | | | | |
| Payment Plan enrollment deadlines | Visit spcollege.edu/payment-plan for all tuition payment plans. | | | | | |
| Financial aid deadlines | Visit spcollege.edu/financial-aid-dates for all financial aid deadlines. | | | | | |
| LAST DAY TO DROP, RECEIVE REFUND, AND/OR CHANGE TO AUDIT | | | | | | |
| Last Day to Drop With A Refund | Dec. 11, 2023 | Jan. 19 | Jan. 19 | Jan. 26 | Feb. 16 | March 22 |
| LAST DAY TO WITHDRAW *WITH GRADE OF "W" | | | | | | |
| Last Day to withdraw/drop with Grade of "W" | Dec. 28, 2023 | April 7 | Feb. 21 | April 5 | April 15 | April 23 |
| LAST DAY TO WITHDRAW/DROP WITH GRADE OF "WF" | | | | | | |
| Last Day to withdraw/drop with Grade of "WF" | Dec. 11, 2023 | May 9 | March 7 | May 5 | May 9 | May 9 |
| EXAMS | | | | | | |
| Mid-term exams (online) | | March 8-10 | | | | |
| Final exams (online) | | May 3-5 | | May 3-5 | | |
| Final exams | | May 6-9 | | | May 6-9 | |
| GRADUATION | | | | | | |
| Name in Program Deadline | TBD | TBA | TBA | TBD | TBA | TBA |
| Commencement (final dates dependent on venue) | May 11 | May 11 | May 11 | May 11 | May 11 | May 11 |
| COLLEGE CLOSED | | | | | | |
| Martin Luther King, Jr. Holiday | | Jan. 15 | Jan. 15 | Jan. 15 | Jan. 15 | Jan. 15 |
| Spring Break | | March 10-16 | March 10-16 | March 10-16 | March 10-16 | March 10-16 |
| Spring Holiday | | March 29-31 | March 29-31 | March 29-31 | March 29-31 | March 29-31 |
| FACULTY SCHEDULE | | | | | | |
| Report for duty | | Jan. 12 | Jan. 12 | Jan. 12 | Jan. 12 | Jan. 12 |
| Students may access their classes on MyCourses at the latest by the Friday prior to the first day of classes. | | | | | | |
| Final grades due in PS by 2 p.m. | Jan. 5 | May 10 | March 8 | May 10 | May 10 | May 10 |
| Last working day | | May 10 | May 10 | May 10 | May 10 | May 10 |

Calendar subject to change. For an updated calendar of academic events, visit spcollege.edu/calendar.

| | SUMMER FULL TERM May 20- July 26 | 1ST 8-WEEK SESSION May 20- July 12 | WEEKEND COLLEGE May 25- July 21 | 6-WEEK EXPRESS SESSION June 17-July 26 | 2ND 8-WEEK SESSION June 3- July 26 |
|--|--|--|---------------------------------------|---|--|
| TERM/SESSION DATES | | | | | |
| First day of term/session | May 20 | May 20 | May 25 | June 17 | June 3 |
| Last day of term/session | July 26 | July 12 | July 21 | July 26 | July 26 |
| ADMISSIONS | | | | | |
| Application deadline for non-health programs, including Bachelor's programs | Admission to programs are aligned to students' first term (or session) at SPC and do not observe specific deadlines. | | | | |
| Health programs ad-missions deadlines | Dates vary by program. Visit spcollege.edu/health-admissions for details. | | | | |
| International students application deadline | March 1 | March 1 | March 1 | March 1 | March 1 |
| Last day to apply for Study Abroad trips | Dates vary by trip. Visit stpe.co/studyabroad for details. | | | | |
| REGISTRATION | | | | | |
| View classes | March 11 | March 11 | March 11 | March 11 | March 11 |
| View textbook, Gen. Education course syllabi | April 5 | April 5 | April 5 | April 5 | April 5 |
| Special programs registration begins | March 25 | March 25 | March 25 | March 25 | March 25 |
| Registration for all students begins | March 27 | March 27 | March 27 | March 27 | March 27 |
| Senior citizens/state employees | May 17 | May 17 | May 17 | May 17 | May 17 |
| Last day to add a class | May 21 | May 20 | May 30 | June 18 | June 3 |
| TUITION/FINANCIAL AID | | | | | |
| Tuition/Fee payment due | April 17 | April 17 | April 17 | May 24 | June 7 |
| FAFSA priority deadline date | Feb. 1 | Feb. 1 | Feb. 1 | Feb. 1 | Feb. 1 |
| Many funds are awarded on a first-come, first-serve basis, so the earlier you submit your FAF-SA, the more funds you could be awarded. | | | | | |
| ayment Plan enrollment deadlines | Visit spcollege.edu/payment-plan for all tuition payment plans. | | | | |
| Financial aid deadlines | Visit spcollege.edu/financial-aid-dates for all financial aid deadlines. | | | | |
| LAST DAY TO DROP, RECEIVE REFUND, AND/OR CHANGE TO AUDIT | | | | | |
| Last Day to Drop, Receive Refund | May 24 | May 24 | June 1 | June 21 | June 7 |
| LAST DAY TO WITHDRAW *WITH GRADE OF "W" | | | | | |
| Last Day to With-draw with Grade of "W" | July 5 | June 26 | July 4 | July 13 | July 9 |
| LAST DAY TO WITHDRAW *WITH GRADE OF "WF" | | | | | |
| Last Day to With-draw with Grade of "WF" | July 25 | July 11 | July 21 | July 25 | July 25 |
| * FINANCIAL AS-SISTANCE RECIPIENTS: | If you completely withdraw from the College anytime on or before the dates of your session, you may incur repayment of Financial Assistance funds. See financial aid withdrawal deadlines. | | | | |
| EXAMS | | | | | |
| Mid-term exams (online) | June 21-23 | | | | |
| Final exams (online) | July 19-21 | | July 18-20 | | |
| Final exams | July 22-25 | | | July 22-25 | |
| GRADUATION | | | | | |
| SPC does not hold commencement in the Summer. | | | | | |
| COLLEGE CLOSED | | | | | |
| Memorial Day | May 27 | May 27 | May 27 | May 27 | May 27 |
| Juneteenth | June 19 | June 19 | June 19 | June 19 | June 19 |
| Independence Day (observed) | July 4 | July 4 | July 4 | July 4 | July 4 |
| FACULTY SCHEDULE | | | | | |
| Report for duty | May 20 | May 20 | May 20 | May 20 | May 20 |
| Students may access their classes on MyCourses at the latest by the Friday prior to the first day of classes. | | | | | |
| Final grades due in PS by 2 p.m. | July 26 | July 12 | July 26 | July 26 | July 26 |
| Last working day | July 26 | July 26 | July 26 | July 26 | July 26 |



Allstate Center (AC)

3200 34th St. S. St. Petersburg, FL 33711

Map: Page 23

Provost: Leslie Hafer 727-341-4554

Associate Provost: Keron Jean-Baptiste 727-341-4185

Recruitment: 727-341-3102

Student Support Manager: Denotra Showers 727-791-2456



Bay Pines STEM Center (STEM)

4723 Bay Pines Terr. St. Petersburg, FL 33708

Provost: Leslie Hafer 727-341-4554

Director: Erica Moulton 727-344-8043



Caruth Health Education Center (HEC)

7200 66th St. N. Pinellas Park, FL 33781

Map: Page 24

Provost: Mark F. Strickland, Jr. 727-394-6110

Associate Provost: Damon Kuhn 727-341-3602

Recruitment: Celeste Daniele 727-341-3585

Student Support Manager: Dawn Janusz 727-341-3767



Clearwater Campus (CL)

2465 Drew St. Clearwater, FL 3376

Map: Page 25

Provost: Tashika Griffith 727-791-2474

Associate Provost: 727-791-2492

Academic Services: Joy Moore-Cruse 727-791-2542

Recruitment: Angeliki Kontodiakos 727-791-2544

Student Support Manager: Cheri DeBlare 727-614-7008



Downtown Center (DT)

244 Second Ave. N. St. Petersburg, FL 33701

Map: Page 26

Provost: Eric Carver 727-341-3666

Associate Provost: Brooke Janik 727-341-4248

Academic Services: Djuan Fox 727-341-3334

Recruitment: 727-341-3102

Student Support Manager: Chaye Smith 727-341-7157



EpiCenter (EPI)

13805 58th St. N. Clearwater, FL 33760

Map: Page 27

Provost: Tashika Griffith 727-791-2474

Dean Workforce Development & Corp. P'ships: Belinthia Berry 727-341-4279

Executive Director Collaborative Labs: Andrea Henning 727-341-3154

Director Workforce Education: Eric McClendon 727-341-4738

Director Corporate & Continuing Education: Maginda Monter 727-341-4346

Director Career Connections: Jason Krupp 727-341-3339



Midtown Center (MT)

Douglas L. Jamerson, Jr. Midtown Center
1300 22nd St. S. St. Petersburg, FL 33710
Cecil B. Keene, Sr. Student Achievement Center
1048 22nd S. St. St. Petersburg, FL 33712
Maps: Page 28-29
Provost: Eric Carver 727-341-3666
Associate Provost: Yvonne Williams 727-302-6436
Academic Services: Djuan Fox 727-341-3334
Recruitment: 727-341-3102
Student Support Manager: Takita Cuthbertson 727-341-4248

Seminole Campus (SE)

9200 113th St. N. Seminole, FL 33772
Map: Page 30
Provost: Mark F. Strickland, Jr. 727-394-6110
Associate Provost: Lisa Borzewski 727-394-6109
Academic Services: Daniel Bueller 727-341-4221
Recruitment: Jerrick Rivera 727-341-3407
Student Support Manager: Gigi Reiter 727-394-6949

St. Petersburg/Gibbs Campus (SP/G)

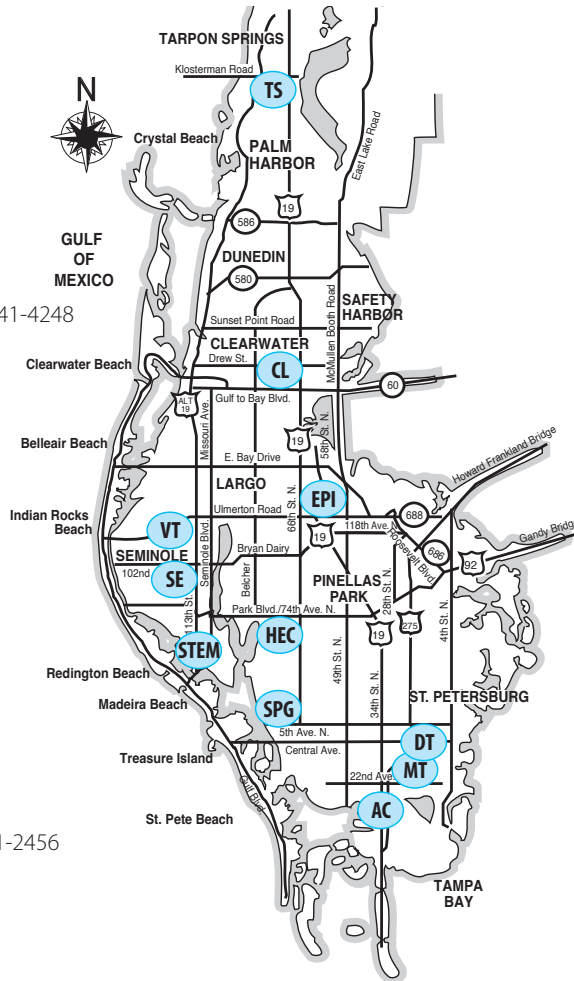
6605 Fifth Ave. N. St. Petersburg, FL 33710
Map: Page 31
Provost: Leslie Hafer: 727-341-4554
Associate Provost: Keron Jean-Baptiste 727-341-4185
Academic Services: Stephen Andrasik 727-341-4275
Recruitment: Joven Jocelyn 727-341-3404
Student Support Manager: Denotra Showers 727-791-2456

Tarpon Springs Campus (TS)

600 E. Klosterman Rd. Tarpon Springs, FL 34689
Map: Page 32
Provost: Rodrigo Davis 727-712-5720
Associate Provost: Damon Kuhn 727-341-3602
Recruitment: Juan Sebastian Amado 727-712-5883
Student Support Manager: Theresa Kontodiakos 727-712-5451

Veterinary Technology Center (VT)

12376 Ulmerton Road Largo, FL 33774
Map: Page 33
Provost: Mark F. Strickland, Jr. 727-394-6110
Associate Provost: Damon Kuhn 727-341-3602
Academic Services: Natavia Middleton 727-398-8288
Recruitment: Celeste Daniele 727-341-3585



Did you Know?

Through an agreement with Pinellas Suncoast Transit Authority (PSTA), **students can enjoy FREE bus service by showing a current student ID card** when boarding a PSTA bus. Visit spcollege.edu/free-bus-rides for more information.

CAREER AND ACADEMIC COMMUNITIES CONTACTS

spcollege.edu/degrees-training



Arts, Humanities, and Design

spcollege.edu/arts-humanities-design

| | |
|-----------------------------|--------------|
| Dean Barbara Hubbard | 727-334-6011 |
| Jeffrey Fabiszewski – CL | 727-791-2548 |
| Donna Williams – SE | 727-394-6119 |
| Wilfred “Bo” Garrard – SP/G | 727-341-4360 |



Business

spcollege.edu/business

| | |
|--------------------------------|--------------|
| Dean Emmanuel Hernandez-Agosto | 727-712-5407 |
| Mike Ewell | 727-791-2610 |



Communications

spcollege.edu/communications

| | |
|-----------------------|--------------|
| Dean Joseph Leopold | 727-791-3719 |
| Amber Estlund – CL | 727-341-7108 |
| David Fitzgerald – SE | 727-341-4736 |
| Margie Wilkoff – SP/G | 727-341-4752 |



Education

spcollege.edu/education

| | |
|---|--------------|
| Dean Kimberly Hartman | 727-712-5877 |
| Associate Dean Heather Duncan | 727-712-5892 |
| Educational Studies/EPI – Micheal Poulin – SP/G | 727-791-2788 |
| Teacher Certification/AS – Pam Wilkins – TS | 727-712-5888 |
| Teacher Certification/AS – Pat Roper – TS | 727-712-5410 |



Engineering, Manufacturing, and Building Arts

spcollege.edu/engineering-manufacturing-building-arts

| | |
|--------------------------------------|--------------|
| Dean Natavia Middleton | 727-398-8288 |
| Program Director- Sidney Martin – CL | 727-394-6203 |



Health Sciences and Veterinary Technology

spcollege.edu/health-sciences-veterinary-technology

| | |
|--|--------------|
| Dean of Health Services/Sciences – Deanna Stentiford | 727-341-4150 |
| Dean of Nursing – Louisiana Louis | 727-341-3472 |
| Assistant Dean of Nursing – Clare Owen | 727-497-5023 |
| Dental Hygiene – Barbara Mulholland | 727-302-6630 |
| Emergency Medical Services – Ralph Sibbio | 727-371-3726 |
| Funeral Services – Kevin Davis | 727-341-3781 |
| Health Info Technology – Sheila Newberry | 727-341-3623 |
| Health Sciences/Services | 727-341-4150 |
| Nursing Bachelor’s Degrees | 727-341-3622 |

CAREER AND ACADEMIC COMMUNITIES CONTACTS

spcollege.edu/degrees-training

| | |
|--|--------------|
| Physical Therapy Assistant – Kory Thomas | 727-341-3612 |
| Radiography – John Fleming | 727-341-3627 |
| Respiratory Care – Steve Hardt | 727-341-3627 |
| Surgical Services – Ashley Lake | 727-614-7068 |
| Veterinary Technology | |
| Dean Natavia Middleton | 727-398-8288 |
| Irene McDade | 727-302-6712 |



Public Safety, Public Policy, Ethics, and Legal Studies

spcollege.edu/public-safety-public-policy-legal-studies

| | |
|---|--------------|
| Dean Susan Demers | 727-791-2501 |
| Applied Ethics Institute – Minerva Veeseer-Bobea | 727-341-3222 |
| Bachelor's Public Safety Administration | 727-341-4490 |
| Bachelor's Public Policy/Admin. – Jeffrey Kronschnabl | 727-394-6205 |
| Center for Public Safety Information – Eileen LaHaie | 727-341-4502 |
| Criminal Justice Lower Division | 727-341-4490 |
| Criminal Justice Indoor Range – Don Kiefhaber | 727-341-4119 |
| Criminal Justice Academies – Micheal Dibuono | 727-614-7026 |
| Emergency Medical Services – Ralph Sibbio | 727-371-3726 |
| Fire Academy – Robert Polk | 727-302-6852 |
| Paralegal Studies – Destini White | 727-614-7223 |
| Training Center Director | 727-614-7026 |



Science and Mathematics

spcollege.edu/science-mathematics

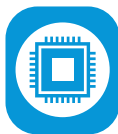
| | |
|-----------------------------------|--------------|
| Science Dean Natavia Middleton | 727-398-8288 |
| Natural Science – Sheila Wootters | 727-341-4306 |
| Mathematics Dean Jimmy Chang | 727-341-4305 |
| Joy Moore-Cruse – CL | 727-791-2542 |
| Hannah Johnson – DT/MT | 727-791-2559 |
| Daniel Bueller – SE | 727-341-4221 |
| Nydia Nelson – SP/G | 727-614-7274 |
| Pelagia Kilgore – TS | 727-398-8493 |



Social and Behavioral Sciences and Human Services

spcollege.edu/social-behavioral-sciences-human-services

| | |
|---|--------------|
| Dean Joseph Smiley | 727-712-5851 |
| Human Services – Latresha Bigham-Moore – SP/G | 727-497-5015 |
| Social Sciences – Frederic Berthiaume – CL | 727-791-5963 |
| Social Sciences – Candice Williams – DT/MT | 727-344-8024 |
| Social Sciences – Lisa James – TS | 727-712-5773 |



Technology

spcollege.edu/technology

| | |
|----------------------------------|--------------|
| Dean Norene Kemp | 727-341-7179 |
| Bachelor/AS Programs – John Long | 727-341-4620 |

College Administration Contacts

College Administration Hours*

Mon. - Thur. 8:30 a.m.-5:30 p.m. ET
 Friday 8:30 a.m.-1 p.m. ET

*See weblinks below for extended and limited on-campus and online/virtual availability.

Campus Legend

| | | | |
|------|-------------------------|------|-----------------------------|
| AC | Allstate Center | MT | Midtown Center |
| STEM | Bay Pines STEM Center | SE | Seminole Campus |
| CL | Clearwater Campus | SP/G | St. Petersburg/Gibbs Campus |
| DT | Downtown Center | TS | Tarpon Springs Campus |
| EPI | EpiCenter | VT | Veteran Technology Center |
| HEC | Health Education Center | | |

Accessibility Services

spcollege.edu/accessibility-services

| | |
|---|--------------|
| Student ADA/504 – Misty Kemp | 727-614-7056 |
| Rita Ajazi | 727-341-4510 |
| Assistive Technology – Regina Miller | 727-341-3146 |
| Assistive Technology – Jaiden Dean | 727-341-3264 |
| Interpreting/Captioning/Sign Language – Stephanie Wyatt | 727-791-5942 |

ONLINE HELP

| | |
|---------------------------------|--|
| Contact Information | spcollege.edu/accessibility-services-contacts |
| Register and Request Assistance | spcollege.edu/accessibility-services |

CAMPUS HELP

| | | |
|------|-------------------|--------------|
| AC | Ray Hollowell | 727-341-4316 |
| CL | Jeff Zeigler | 727-791-2710 |
| DT | Stephanie Silvers | 727-341-3721 |
| EPI | Tiffany Konsza | 727-302-6445 |
| HEC | Frances Rivera | 727-341-4141 |
| MT | Tiffany Konsza | 727-302-6445 |
| SE | Kelli Mitchell | 727-394-6289 |
| SP/G | Ray Hollowell | 727-341-4316 |
| TS | Julie Robinson | 727-712-5225 |
| VT | Frances Rivera | 727-341-4141 |

Admissions & Records

spcollege.edu/admissions

727-341-7141

| | |
|--|--------------|
| Bachelor’s Programs (Non-Health) – David White | 727-341-4725 |
| Collegewide Testing – Sean Murren | 727-341-3032 |
| Transfer Programs – Sheryl Mundorff | 727-791-2763 |

ONLINE HELP

| | | |
|----------------------------|--|--|
| Admissions | spcollege.edu/admissions | admissions.records@spcollege.edu |
| Graduation | spcollege.edu/graduation | graduationquestions@spcollege.edu |
| Health Programs Admissions | spcollege.edu/health-admissions | |
| Name/Record Change | spcollege.edu/forms-online | |
| Residency | spcollege.edu/residency | residencydocuments@spcollege.edu |
| Testing | spcollege.edu/testing | testing@spcollege.edu |
| Transcripts | spcollege.edu/transcripts | spctranscripts@spcollege.edu |
| Transfer Programs | spcollege.edu/special-programs | mundorff.sheryl@spcollege.edu |
| Transient Students | spcollege.edu/transient-students | transientquestions@spcollege.edu |

CAMPUS HELP – STUDENT SERVICES OFFICE

| | | |
|------|-----------------------|--------------|
| AC | AC 100 | 727-341-3750 |
| CL | LA 100 | 727-341-4772 |
| DT | DC 101M | 727-341-4249 |
| HEC | Room 173 | 727-341-4772 |
| MT | MTJC 105A (Lobby) | 727-341-7156 |
| SE | UP 120 Front Desk | 727-394-6083 |
| SP/G | SU Building 1st Floor | 727-341-4614 |
| TS | Administration Bldg. | 727-712-5750 |

Advising - Career & Academic Advising spcollege.edu/advising

727-341-4772

ONLINE HELP

| | |
|---|--|
| Appointments: 30-minute Phone, Virtual, or In-person | spcollege.edu/advising |
| Virtual Advising Center: Phone or Virtual via Microsoft Teams | spcollege.edu/advising |
| Find your Advisor | spcollege.edu/advising |
| Health Programs – Make an Appointment | stpe.co/healthprogramadvising |

CAMPUS HELP – STUDENT SERVICES OFFICE

| | |
|------|-------------------------|
| AC | AC 100 |
| CL | LA 100 |
| DT | DC 101N |
| HEC | 173 – Student Affairs |
| MT | MTJC 100 (Lobby) |
| SE | UP 120 |
| SP/G | SU 137 |
| TS | Administration Building |

Athletics

athletics.spcollege.edu

727-341-4777

| | | |
|----------------------|--------------|--|
| Director, Davie Gill | 727-341-4314 | |
| Jennifer Chen | 727-341-4777 | chen.jennifer@spcollege |

Bookstore – Barnes & Noble

spcollege.bncollege.com

ONLINE HELP

| | |
|-------------------------|--|
| Order Books | spcollege.bncollege.com/course-material/course-finder |
| Paying for Your Books | spcollege.edu/paying-for-your-textbooks |
| CAMPUS LOCATIONS | spcollege.bncollege.com/customer-service |

| | | |
|------|--------------|--------------|
| CL | ST Building | 727-431-4029 |
| HEC | Room 184 | 727-202-3603 |
| SE | Near Library | 727-202-3542 |
| SP/G | SS 104 | 727-347-0310 |
| TS | BB Building | 727-940-9019 |

Business Office

727-341-4772

ONLINE HELP

| | | |
|----------------------------------|--|--|
| Florida Pre-Paid Tuition | spcollege.edu/florida-prepaid | prepaid@spcollege.edu |
| Pay tuition | spcollege.edu/tuition | |
| Tuition Fee Waivers & Exemptions | spcollege.edu/tuition-waivers | |

CAMPUS HELP – Student Services Office

| | | |
|----|---------|--------------|
| AC | AC 100 | 727-341-3750 |
| CL | LA 100 | 727-791-2687 |
| DT | DC 101M | 727-341-3427 |

| | | |
|------|----------------------|--------------|
| HEC | Room 173 | 727-341-3427 |
| MT | MTJC 105A | 727-341-7156 |
| SE | UP Lobby | 727-394-6134 |
| SP/G | SU 103 | 727-341-4763 |
| TS | Administration Bldg. | 727-712-5460 |

Career Services

spcollege.edu/career-services

727-394-6988

ONLINE HELP

| | |
|---------------------------------|--|
| Contact Us | spcollege.edu/contact-career-services |
| Career Exploration | spcollege.edu/career-exploration |
| Hire SPC Titans – Job Board | spcollege.joinhandshake.com |
| Internships | spcollege.edu/internships |
| Resume and Interview Assistance | spcollege.edu/resume-interview-assistance |

CAMPUS HELP – Career Readiness Navigators

| | | |
|------|---------------------|--------------|
| AC | Fabre Williams | 727-341-4256 |
| CL | Dean Patricia Watts | 727-791-2408 |
| DT | Brandon Hodges | 727-341-4183 |
| HEC | Zachary Remis | 727-341-3736 |
| MT | Brandon Hodges | 727-341-4183 |
| SE | Aundra Williams | 727-712-5443 |
| SP/G | Fabre Williams | 727-341-4254 |
| TS | Carissa Roldan | 727-497-5030 |

Emergency Management

spcemergency.com

727-791-2560

| | |
|----------------------|----------------------------|
| Emergencies | Call 911 then 727-791-2560 |
| Collegewide Dispatch | 727-791-2560 |
| SPC Toll-Free | 866-822-3978 |

ONLINE HELP

| | |
|-------------------------------|--|
| College Emergency Information | spcemergency.com |
| Emergency Response Guide | stpe.co/emergencyresponseguide |
| Sign Up for Emergency Alerts | spcemergency.com/receiving-alerts |
| SPC Safety and Security | spcollege.edu/safety-security |

CAMPUS HELP – Security Offices

| | | |
|------|---------------------------|--------------|
| AC | Main Building | 727-341-4436 |
| CL | LA 100 | 727-791-2764 |
| DT | Lobby near Parking Garage | 727-341-4262 |
| HEC | HC-HE 104D | 727-791-2560 |
| MT | MTJC 118 | 727-398-8267 |
| SE | UP 101 | 727-791-2560 |
| SP/G | SU 120 | 727-791-2560 |
| TS | Agora Bldg. – AG 102-104 | 727-791-2560 |

Financial Aid

spcollege.edu/AskFAS

727-791-2485

ONLINE HELP

| | |
|--|---|
| Ask PETE our Chatbot a question 24/7/365 | PETE is in the right corner at spcollege.edu/financial-aid |
| Submit Your Question Online | stpe.co/askfasrequest |
| How to Pay for College | spcollege.edu/financial-aid |
| FAFSA | fafsa.gov |
| Financial Aid TV videos | spcollege.financialaidtv.com |
| Florida Pre-Paid College Questions | prepaid@spcollege.edu |
| Book Line of Credit | spcollege.edu/book-line-of-credit |

| | |
|---------------------------------------|---------------------------------------|
| Disbursement/Refund Dates | spcollege.edu/financial-aid-refunds |
| Receiving Financial Aid | spcollege.edu/receiving-financial-aid |
| Student Employment | spcollege.edu/student-employment |
| Scholarships | spcollege.edu/scholarships |
| Satisfactory Academic Progress | spcollege.edu/sap |
| Student Loan Questions – Ion tuition™ | Sign on through MySPC or 855-693-4932 |
| Withdrawing From Class | spcollege.edu/withdrawals |
| Important Dates | spcollege.edu/financial-aid-dates |

CAMPUS HELP – Check website for hours at each location

| | |
|------|-------------------------|
| AC | Main Building |
| CL | LA 100 |
| DT | DC 101 J |
| HEC | Main Building |
| MT | MTJC 109 |
| SE | UP Building |
| SP/G | SU Building |
| TS | Administration Building |

Food Services

spcollege.edu/food-services

| | | | |
|------|--|-----------------------------|--------------|
| AC | AC 129 – Common Ground Café | | |
| CL | ES Building – Nature’s Table Clearwater | clearwater.naturestable.com | 727-669-2424 |
| DT | 1st Floor – Nature’s Table DTSP | dtsp.naturestable.com | 727-822-8690 |
| HEC | Room 204 – Nature’s Table HEC | hec.naturestable.com | 727-201-8772 |
| MT | MTJC 150 – Deuces Den Lounge | spcollege.edu/food-services | 727-614-7209 |
| SE | UPC 1st Flr. Lobby – Nature’s Table Seminole | bardmoor.naturestable.com | 727-319-0669 |
| SP/G | LI Building – Nature’s Table Gibbs | gibbs.naturestable.com | 727-289-8772 |
| TS | BB Bldg. – Nature’s Table Tarpon | tarpon.naturestable.com | 727-940-6644 |

VENDING MACHINES

| | |
|------|--|
| AC | Main Building – AC 129 |
| CL | ES – All Floors/LS, SS, NM – 1st Floor/LI – 1st Floor, CR-A, ST |
| DT | 2nd/4th Floors |
| HEC | Main Building – 2nd Floor (Cafeteria) |
| MT | 1st/2nd/3rd Floors |
| SE | UP near Titan Lounge and TL Building |
| SP/G | TE – 1st Floor/SC – 1st Floor/SA – 1st Floor/LA – 1st Floor/SU – 1st & 2nd Floor |
| TS | Agora – Student Lounge/LY – 1st/2nd Floors/BB Building |

High School Programs

spcollege.edu/high-school-programs

ONLINE HELP

| | |
|-------------------------|-------------------------------|
| Collegiate High Schools | spchs.spcollege.edu |
| Dual Enrollment | spcollege.edu/dual-enrollment |
| Early Admission | spcollege.edu/early-admission |
| Early College | spcollege.edu/early-college |

CAMPUS HELP – EARLY TITANS: Dual Enrollment/Early College/Early Admission

| | | |
|------|-------------------|--------------|
| CL | Jeff Cesta | 727-791-5970 |
| | Ana Cotto-Pizarro | 727-791-5971 |
| SE | Sherry Pantelides | 727-394-6164 |
| | Lynne Wolf | 727-394-6023 |
| SP/G | Sherry Pantelides | 727-394-6164 |
| | Lynne Wolf | 727-394-6023 |
| TS | Janine Small | 727-712-5281 |
| | Lori Condie | 727-712-5400 |

COLLEGIATE HIGH SCHOOLS

| | |
|---|--------------|
| SPC STEM High School - Downtown Center | 727-341-4249 |
| Principal Raquel Hairston | 727-341-4368 |
| Asst. Principal Remus Bulmer | 727-302-6770 |
| Admin. Asst. Lisset Cepero | 727-341-3081 |
| SPC Collegiate High School – St. Petersburg/Gibbs Campus | 727-341-4610 |
| Principal Ian Call | 727-341-3521 |
| Asst. Principal Zanetta Robinson | 727-712-5265 |
| Admin. Asst. Martha Alvarez | 727-341-4610 |
| SPC Collegiate High School – Tarpon Springs Campus | 727-712-5891 |
| Principal Ryan Halstead | 727-398-8465 |
| Asst. Principal Stephanie Pawlowicz | 727-712-5792 |
| School Counselor Heidi Jolliffe | 727-791-2774 |
| Admin. Asst. Annelies Williamson | 727-712-5891 |

Honors Programs

spcollege.edu/honors-program

727-791-2708

| | |
|-----------------------|--------------|
| Director, Earl Fratus | 727-394-6045 |
| Linda Chang – CL 185 | 727-791-2511 |

CAMPUS HELP

| | |
|------------------|--------------|
| CL Welcita Gann | 727-791-5982 |
| SE Renee Kessing | 727-394-6137 |
| SP/G Tara Hunter | 727-302-6627 |
| TS James Ralph | 727-712-5252 |

International Programs

spcollege.edu/international-programs

| | |
|---|--|
| International Student Services – Angela Cole | 727-791-2632 |
| International Student Services – Irene Chitikov | 727-341-4734 |
| International Student Services – Ralph Regnier | 727-341-4370 |
| International Student Admissions – Eric Gonzalez-Franco | 727-302-6510 |
| Study Abroad – Gloria Parrot | 727-341-4735 |
| International Student Services | spcollege.edu/international-students |
| International Admissions | Internationaladmissions@spcollege.edu |
| Study Abroad – Gloria Parrot | stpe.co/studyabroad |
| Center for International Programs | spcollege.edu/international-programs |

CAMPUS HELP

| |
|-----------------------------------|
| CL LA Building – LA 190 |
| SP/G SU Building – SU 332 |
| TS FA Building (Library) – FA 148 |

Learning Resources

spcollege.edu/learning-resources

ONLINE HELP

| | |
|---|--|
| Libraries & Learning Centers | spcollege.edu/learning-resources |
| Library Portal | stpe.co/libraryportal |
| How to get/use Student ID Card/Library Card | spcollege.edu/student-ID |
| Info Guides | spcollege.libguides.com/home |
| Tutoring – Make in-person appointment | spcollege.libguides.com/inperson |
| Tutoring – Make online appointment | spcollege.libcal.com/appointments |
| Accessing Tutoring 24/7 through Tutor.com | spcollege.libguides.com/tutordotcomaccess |
| Virtual Learning Commons | stpe.co/virtualllearningcommons |

CAMPUS HELP – Hours:

spcollege.libguides.com/studentsneedtoknow

| | | |
|------|---|------------------------------|
| AC | Learning Resources Assc. Dir. – Paul Vermeren | 727-791-2416 |
| CL | LI 207 – Learning Center/Tutoring Services Library (LI) | 727-791-2722 727-791-2614 |
| | Learning Resources Assc. Dir. – Michele Laney | 727-791-2525 |
| DT | DC 109 – Learning Center/Tutoring Services Math Tutoring | 727-302-6588 727-302-6591 |
| | Learning Resources Assc. Dir. – Heather Disler | 727-344-8065 |
| HEC | Room 195 – Library/Writing Studio | 727-341-3604 |
| | Room 199 – New Initiative Program (NIP) (Nursing and Health Tutoring Services) | 727-341-3724 |
| | Learning Resources Assc. Dir. – Josh Brown | 727-341-3657 |
| | NIP Instr. Support Mgr. – Lisa Leonard | 727-341-3724 |
| MT | MTJC 120 & 210 – Learning Center/Tutoring Services | 727-398-8268 |
| | Learning Resources Assc. Dir. – Heather Disler | 727-344-8065 |
| SE | TL 104 – Learning Center/Tutoring Services | 727-394-6133 |
| | Learning Resources Assc. Dir. – Jennifer Gregor | 727-394-6184 |
| SP/G | SU 203 – Learning Center/Tutoring Services Library Writing Studio | 727-341-3512 727-341-7168 |
| | SA 101 – Student Support Services | 727-241-4372 |
| | Learning Resources Assc. Dir. – Paul Vermeren | 727-791-2416 |
| TS | FA 135 – Learning Center/Tutoring Services | 727-712-5719 |
| | Learning Resources Assc. Dir. – Ethan Hart | 727-712-5728 |

Library

spcollege.edu/libraries

ONLINE HELP

| | |
|---|--|
| Libraries & Learning Centers | spcollege.edu/learning-resources |
| Library Portal | stpe.co/libraryportal |
| How to get/use Student ID Card/Library Card | spcollege.edu/student-ID |
| Info Guides | spcollege.libguides.com/home |
| Tutoring – Make in-person appointment | spcollege.libguides.com/inperson |
| Tutoring – Make online appointment | spcollege.libcal.com/appointments |
| Accessing Tutoring 24/7 through Tutor.com | spcollege.libguides.com/tutordotcomaccess |
| Virtual Learning Commons | stpe.co/virtualllearningcommons |
| | spcollege.libguides.com/studentsneedtoknow |

CAMPUS LOCATIONS – Hours:

| | | |
|------|--|--------------|
| AC | Main Bldg. – 2nd Floor | 727-791-2416 |
| CL | LI Bldg. – Clearwater East Community Library at SPC | 727-791-2614 |
| DT | DC 109 – Learning Center | 727-302-6588 |
| HEC | Room 191 – Library & Writing Center Services | 727-341-3604 |
| MT | MTJC 120 – Main Desk | 727-398-8268 |
| SE | LI Bldg. – Dennis L. Jones Seminole Community Library at SPC | 727-394-6905 |
| SP/G | LI Bldg. – West St. Petersburg Community Library at SP/G | 727-341-7186 |
| TS | LI Bldg. – SPC Tarpon Springs Campus | 727-712-5719 |

Lost and Found – See also Security

| | | |
|-----|------------------------|--------------|
| AC | Main Building/Security | 727-341-4436 |
| CL | SS 177 | 727-791-2764 |
| DT | DC 225 | 727-302-6772 |
| HEC | Room 104D | 727-791-2560 |
| MT | MTJC | 727-614-7209 |
| SE | UP 101 | 727-394-6248 |

SP/G SS 111 727-341-3257
 TS Agora Bldg. – Security – AG 102-104 727-712-5790

Registration – See Advising

spcollege.edu/advising

Security

Collegewide Dispatch
 Emergencies
 SPC Toll-Free

spcollege.edu/safety-security **727-791-2560**
 727-791-2560
 Call 911 then 727-791-2560
 866-822-3978

ONLINE HELP

College Emergency Information
 Sign Up for Emergency Alerts
 Reporting Incidents

spcemergency.com
spcemergency.com/receiving-alerts
spcollege.edu/reporting-incidents

CAMPUS HELP – SECURITY OFFICES

AC Main Building 727-341-4436
 CL SS 177 727-791-2764
 DT Lobby near Parking Garage 727-341-4262
 HEC HC-HE 104D 727-791-2560
 MT MTJC 105A – Student Services 727-341-7156
 SE UP 101 727-394-6248
 SP/G SU 120 727-791-2560
 TS Agora Buidling, AG 102-104 727-791-2560

Student Life and Leadership

spcollege.edu/student-life

ONLINE HELP

Events – Titan Connect by Presence
 Event and Resources App
 Student Clubs/Student Government Association

titanconnect.spcollege.edu
 Search for Modern Campus Presence
spcollege.edu/student-life-leadership

CAMPUS HELP – Student Life & Leadership Coordinators

AC Barbara Weaver 727-341-3645
 CL Stephanie Henningsen 727-791-2623
 HEC TBD 727-341-4480
 DT Shawn Landry 727-302-6772
 MT Shawn Landry 727-302-6772
 SE TBD 727-394-6036
 SP/G Barbara Weaver 727-341-3645
 TS Jason Nicholson 727-614-7209

Student Lounges

CL SS 162
 DT 2nd Floor – DC 223
 HEC Room 176
 MT MTJC 150 – Deuces Den Lounge
 SE UP 192
 SP/G SS Building
 TS Agora Building

Student Photo ID

spcollege.edu/student-ID

ONLINE HELP

Contact us studentidcard@spcollege.edu
 How to get/use Student ID Card/Library Card spcollege.edu/student-ID

CAMPUS LOCATIONS – Check website, or call for hours of operation.

| | | |
|------|--------------------------------------|--------------|
| AC | Main Building – AC 100 | 727-712-5843 |
| CL | LI 207 | 727-791-2722 |
| DT | Lobby near Parking Garage | 727-241-4262 |
| MT | MTJC 105A (Lobby) – Student Services | 727-341-7156 |
| HEC | Library Room 199 | 727-341-3604 |
| SE | UP 192 Titan Lounge | 727-394-6103 |
| SP/G | SU 203 | 727-341-3512 |
| TS | Library Front Desk | 727-712-5719 |

Student Support Resources – Titans Care Centers spcollege.edu/titans-care-resources

| | | |
|--|--|------------------------|
| Brother-to-Brother – Antonio Seay | spcollege.edu/brother-to-brother | 727-341-7947 |
| F.A.A.M.E. – Antonio Seay | seay.antonio@spcollege.edu | 727-341-7947 |
| F.A.A.M.E. – North County | marshall.steve@spcollege.edu | |
| F.A.A.M.E. – South County | gant.marshall@spcollege.edu | |
| CCAMPIS Childcare Assistance – Kelly Fried | spcollege.edu/childcare | 727-341-3024 |
| Center of Excellence – Nikishea Wright | spcollege.edu/center-of-excellence | 727-398-8498 |
| College Reach-Out Program CROP – Keisha Blue | spcollege.edu/crop | 727-341-4376 |
| Food Pantry | spcollege.edu/food-pantry | Call location near you |
| Mental Health Resources – Shanya Turner | spcollege.edu/counseling-services | 727-341-3543 |
| RISE – Austin Crawford | spcollege.edu/rise | 727-341-4464 |
| Student Support Services – A. Segura-Vargas | spcollege.edu/sss | 727-341-4372 |
| Summer of Success – Deborah York | spcollege.edu/sos | 727-791-2571 |
| Technology Lending Program | spcollege.edu/technology-lending | |
| Titans UP – April Ross | spcollege.edu/titans-up | 727-394-6160 |
| TRIO Education Opp. Center – Jon Blue | spcollege.edu/educational-opportunity-center | 727-341-3655 |

Testing

spcollege.edu/testing

Coordinator, Sean Murren testing@spcollege.edu
 Certification Testing – Julia Meyer, AC getcertified@spcollege.edu
 727-341-3032
 727-341-4760

CAMPUS LOCATIONS

| | | | |
|------|--------------------------------|--------------|--|
| CL | LA 100 | 727-791-2645 | |
| DT | DC 102 | 727-341-3254 | |
| HEC | Room 101 (limited test center) | 727-341-4187 | |
| MT | MT 114 | 727-302-6637 | |
| SE | UP 105 | 727-394-6233 | setesting@spcollege.edu |
| SP/G | SU 122 | 727-341-3116 | spgtesting@spcollege.edu |
| TS | AD 125 | 727-712-5238 | tstesting@spcollege.edu |

Titan Connect

titanconnect.spcollege.edu

SPC event and resources App – Download by searching for Modern Campus Presence on your mobile device.

Transcripts – See Admissions & Records

spcollege.edu/transcripts

University Partnership Center

spcollege.edu/upc

727-394-6200

AVP Academic Affairs & Partnerships,
Catherine Kennedy – SE
Administrative Services Specialist,
Marina Laca – SE PH 102

727-394-6202

727-394-6200

laca.marina@spcollege.edu

ONLINE HELP

Request Information
Degrees by Discipline
Degrees by Institution
Bachelor's Degrees
Graduate Degrees

stpe.co/upcinforequest

spcollege.edu/upc-degrees-by-discipline

spcollege.edu/upc-degrees-by-institution

spcollege.edu/upc-bachelors-degrees

spcollege.edu/upc-graduate-degrees

Veterans Services

spcollege.edu/veterans-services

727-341-7990

Coordinator, Alison Shenofsky
Main line – Call for appts.

727-394-6204

727-341-7990

veteransservices@spcollege.edu

CAMPUS HELP

CL Jessica Stephens – SS 102
SE Sarah Mauter – UP 179
SP/G David Humpel – SU 331

727-791-2767

727-394-6262

727-302-6401

Women on the Way

spcollege.edu/wow

727-791-2555

Coordinator, Shirley Crumbley

727-791-2555

womenontheway@spcollege.edu

CAMPUS HELP

CL Tara Allen – SS 107
SE Pepper Harth – UP 115
SP/G Bianca Cage – SU 231

727-791-2634

727-341-4561

727-398-8468

Workforce, Community, and Corporate Partnerships

727-341-4445

Vice President, Jackie Skryd
Dean Workforce Dev. & Corp. P'ships, Belintha Berry
Director Workforce Education, Eric McClendon
Director Corp. & Cont. Education, Maginda Montero
Director Career Connections, Jason Krupp
Exec. Dir Collaborative Labs, Andrea Henning
Sr. Adm. Asst., Diane Salmon

727-302-6809

727-341-4279

727-341-4738

727-341-4346

727-341-3339

727-341-3154

727-341-3311

workforce@spcollege.edu

ONLINE HELP

Short-Term Training (STM)
Browse Available Courses

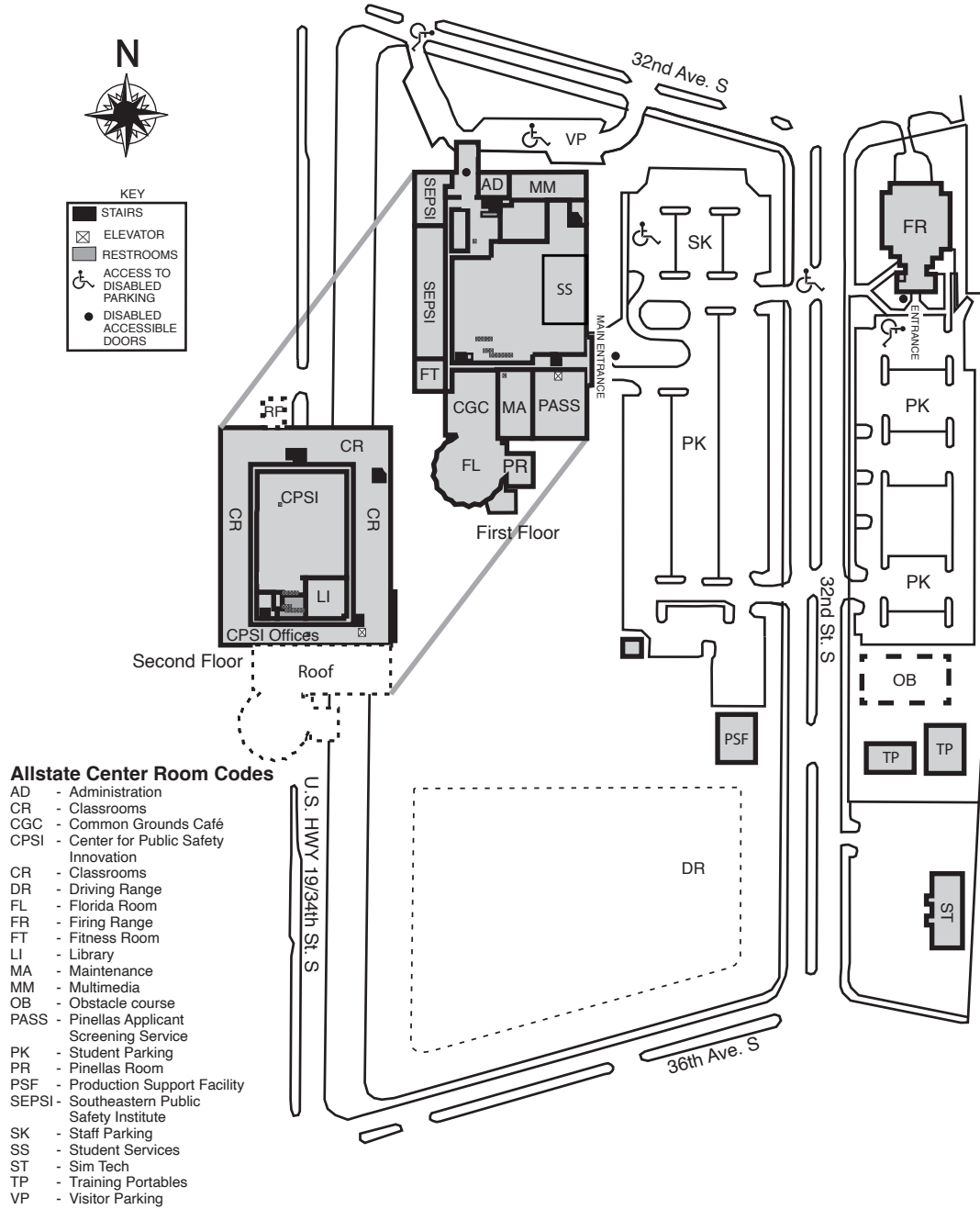
spcollege.edu/workforce

spcollege.augusoft.net

ALLSTATE CENTER

3200 34th St. S.

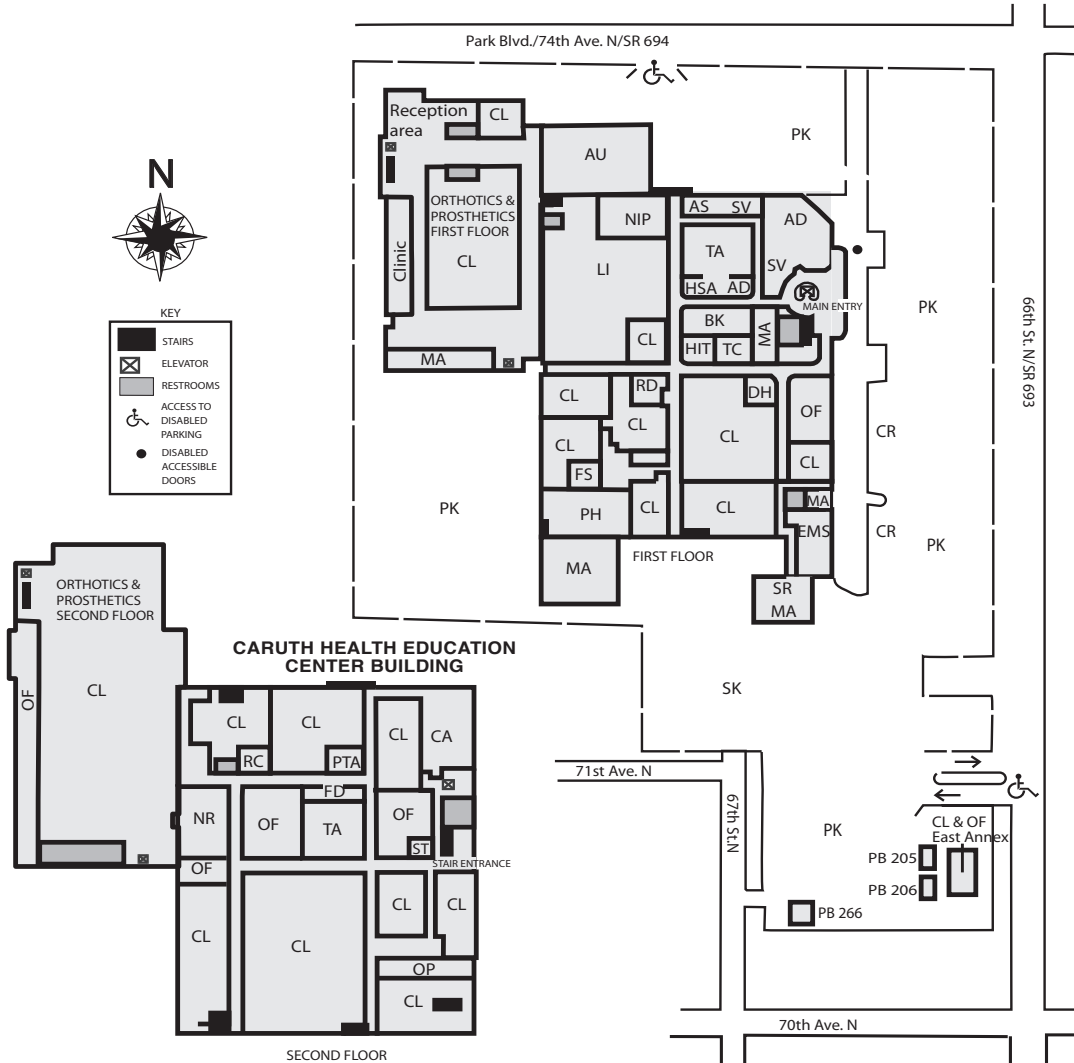
St. Petersburg



CARUTH HEALTH EDUCATION CENTER

7200 66th St. N.

Pinellas Park

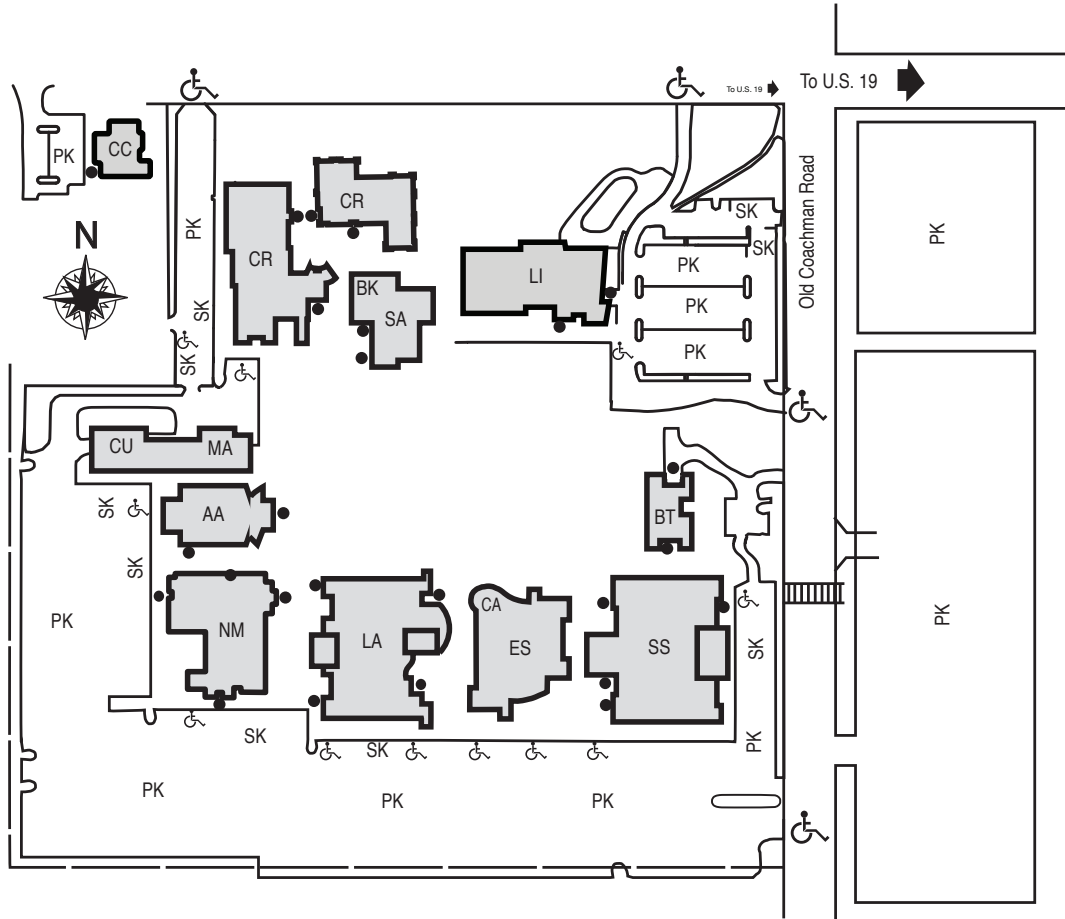


Caruth Health Education Center Room Codes

| | | |
|--------------------------------------|------------------------------------|----------------------------------|
| AD - Administration | LI - Library | SK - Staff parking |
| AS - Accessibility Services | MA - Maintenance | ST - Student Life and Leadership |
| AU - Auditorium | NIP - New Initiative Program | SV - Student Services |
| BK - Bookstore | NR - Nursing | TA - Teaching Auditorium |
| CA - Cafeteria | OF - Offices | |
| CL - Classrooms | TC - Testing Center | |
| CR - Clinic Parking | PB - Portables 205,206 & 266 | |
| DH - Dental Hygiene | PH - Physical Plant/Receiving | |
| EMS - Emergency Medical Services | PK - Student parking | |
| FS - Funeral Services | PTA - Physical Therapist Assistant | |
| HIT - Health Information Technology | RC - Respiratory Therapy | |
| HSA - Health Services Administration | RD - Radiography | |

CLEARWATER CAMPUS

2465 Drew St.
Clearwater



CLEARWATER CAMPUS BUILDING CODES

- | | | |
|---|---|--|
| AA - Arts Auditorium | LA - Language Arts | PK - Student parking |
| BK - Bookstore | • Adaptive Technology | SS - Social Sciences |
| BT - Business Technologies | • Admissions | • Titans Care Center |
| CA - Cafe/Food services | • Advising | • Accessibility Services |
| CR - Crossroads | • Business Office | • Educational Opportunity Center (EOC) |
| CC - Collaborative Center for Emerging Technologies | • Communication | • FAAME/Brother-to-Brother |
| CU - Central Utilities | • Financial Assistance Services | • Student Support Services |
| ES - Ethics | • Testing Services | • Veteran's Services |
| • Social Sciences | • Titans UP! | • Women on the Way |
| • College of Computer & Information Technology | LI - Michael M. Bennett Library | SK - Staff parking |
| | • Career Development | SA - Student Activities |
| | • Learning Support Commons | • Athletics |
| | • Provost Office | • Wellness Center |
| | MA - Maintenance | |
| | NM - Natural Science, Math and College of Education | |
| | • Tampa Bay-Bridges to Bachelorette | |



DOWNTOWN CENTER

244 Second Ave. N.

St. Petersburg



SPC Downtown Room Codes

Classrooms

- DC 122-127 - Classrooms
- DC 224 - Classroom
- DC 226, 230 - Classrooms
- DC 251 - Classroom
- DC 253 - Classroom
- DC 257 - Classroom
- DC 316-317 - Classrooms
- DC 350, 354, 356 & 358 - Classrooms
- DC 460, 462 - Classrooms

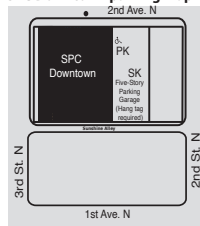
Numbered rooms

- DC 109 - Learning Center
- DC 140 - FAAME/Brother-to-Brother
- DC 210 - Facilities Receiving
- DC 210 - Community room
- DC 223 - Student Lounge
- DC 225 - Student Life & Leadership, Student Government, Outreach
- DC 240 - Science Prep
- DC 244 - Science Lab
- DC 248 - Staff offices
- DC 255 - Center for Economic Impact & Inclusion
- DC 259 - Staff offices
- DC 319 - Offices
- Suite 332 - American Stage offices
- DC 352 - Offices
- DC 411 - Lactation Room
- DC 421 - Florida Orchestra offices
- DC 449 - Staff Wellness Center
- DC 456-458 - Offices
- DC 459 - Center for Civic Learning & Community Engagement
- DC 465 - Technology Services (TS)
- DC 467-473 - Faculty offices

Un-numbered rooms

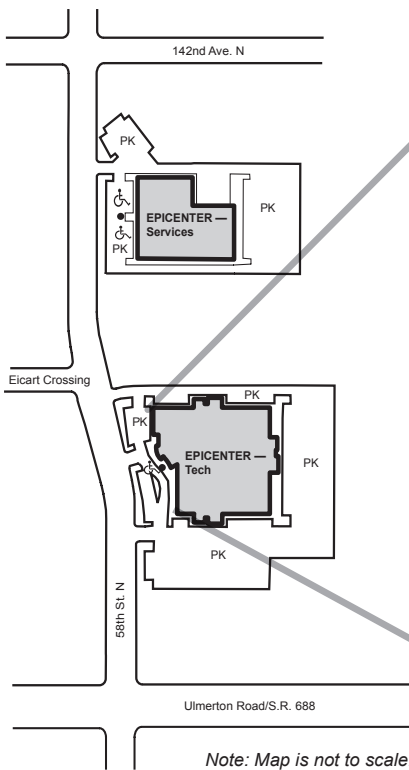
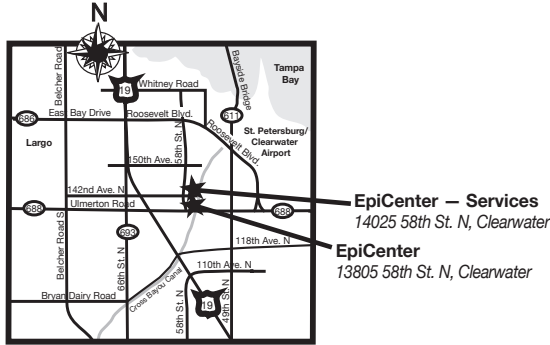
- AS - American Stage offices
- BX - Box office
- DP - Downtown Partnership offices
- CM - Copy machine
- FS - Food service (cafe)
- PK - Student parking
- PO - Provost Office
- RR - Restroom
- SK - Staff parking
- SS - Student Services: Admissions, Advising, Business Office, Career Services, Accessibility Services, Financial Aid, Registration
- ST - Storage
- TC - Testing Center
- VN - Vending

SPC Downtown parking map

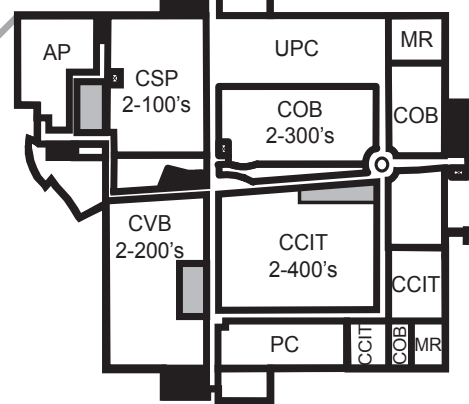


EPICENTER

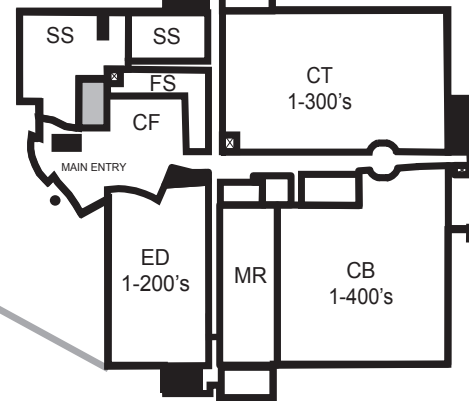
13805 58th St. N.
Clearwater



Second Floor



First Floor



EpiCenter Room Codes

- AP - Academic Programs
- ASA - Academic & Student Affairs
- BP - Baccalaureate Programs
- CB - Collaborative Labs
- CCIT - College of Computer and Information Technology
- CF - Cafeteria
- COB - College of Business
- CSP - CareerSource Pinellas (formerly WorkNet Pinellas)
- CT - Corporate Training

- CVB - Pinellas County Convention & Visitors Bureau
- ED - Pinellas County Economic Development
- FS - Food service
- MR - Meeting rooms
- PC - Pinellas County
- SS - Student Services
- UPC - University Partnership Center

DOUGLAS L. JAMERSON, JR. MIDTOWN CENTER

1300 22nd St. S.

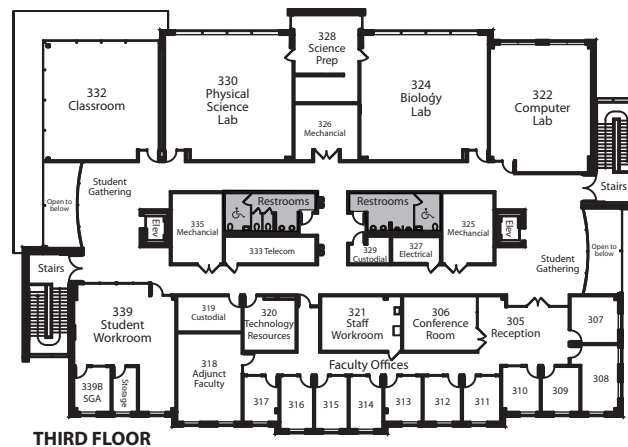
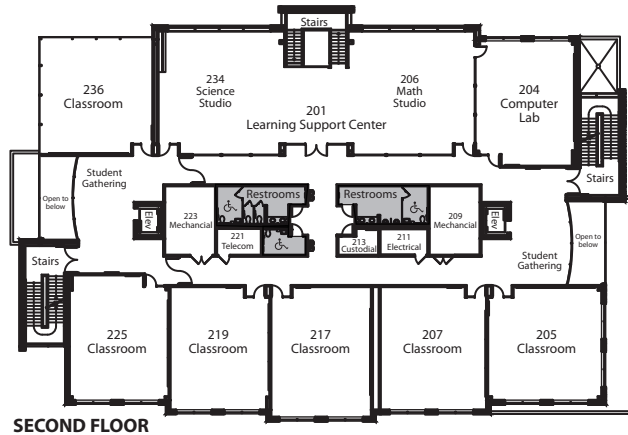
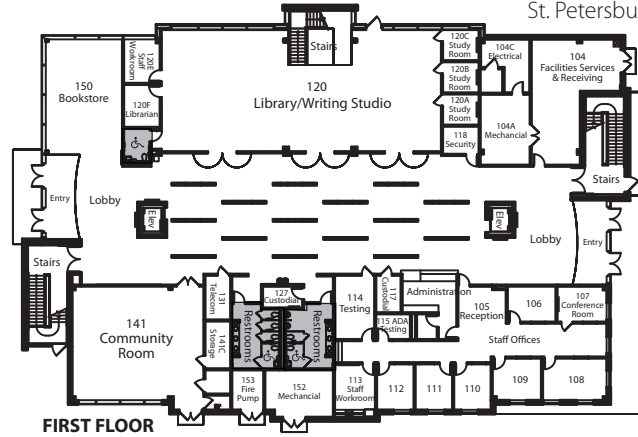
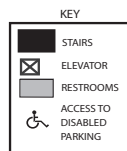
St. Petersburg

SPC Midtown Room Codes

- MT 104 - Facilities Services & Receiving
- MT 105 - Reception
- MT 106, 108-112 - Staff Offices
- MT 107 - Conference Room
- MT 113 - Staff Workroom
- MT 114 - Testing
- MT 115 - ADA Testing
- MT 118 - Security
- MT 120 - Library/Writing Studio
- MT 120A - Study Room
- MT 120B - Study Room
- MT 120C - Study Room
- MT 141 - Community Room
- MT 150 - Bookstore

- MT 201 - Learning Support Center
- MT 204 - Computer Lab
- MT 205 - Classroom
- MT 206 - Math Studio
- MT 207 - Classroom
- MT 217 - Classroom
- MT 219 - Classroom
- MT 225 - Classroom
- MT 234 - Science Studio
- MT 236 - Classroom

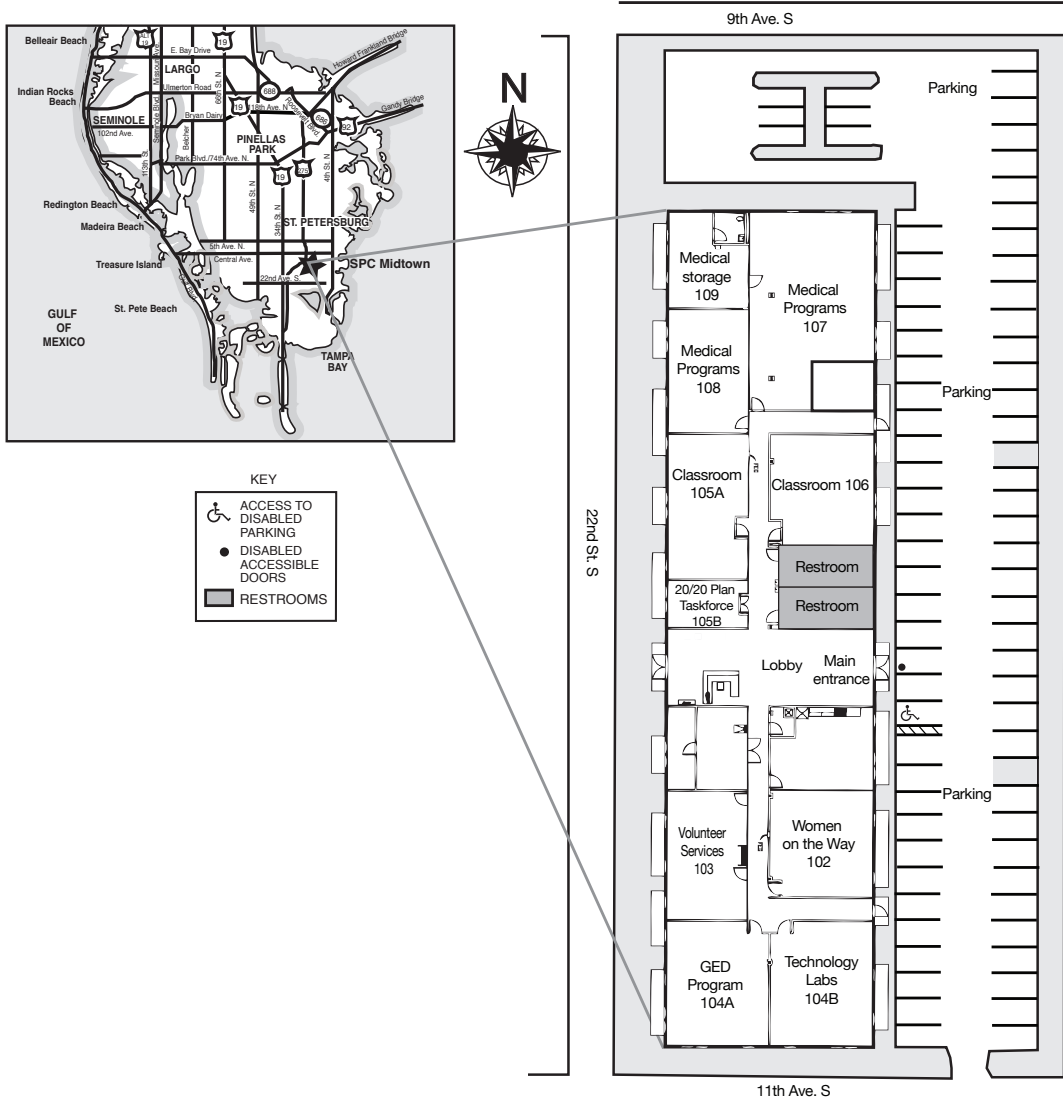
- MT 305 - Reception
- MT 306 - Conference Room
- MT 307-317 - Faculty Offices
- MT 318 - Adjunct Faculty
- MT 320 - Technology Resources
- MT 321 - Staff Workroom
- MT 322 - Computer Lab
- MT 324 - Biology Lab
- MT 328 - Science Prep
- MT 330 - Physical Science Lab
- MT 332 - Classroom
- MT 339 - Student Workroom
- MT 339B - Student Government



CECIL B. KEENE, SR. STUDENT ACHIEVEMENT CENTER

1048 22nd St. S.

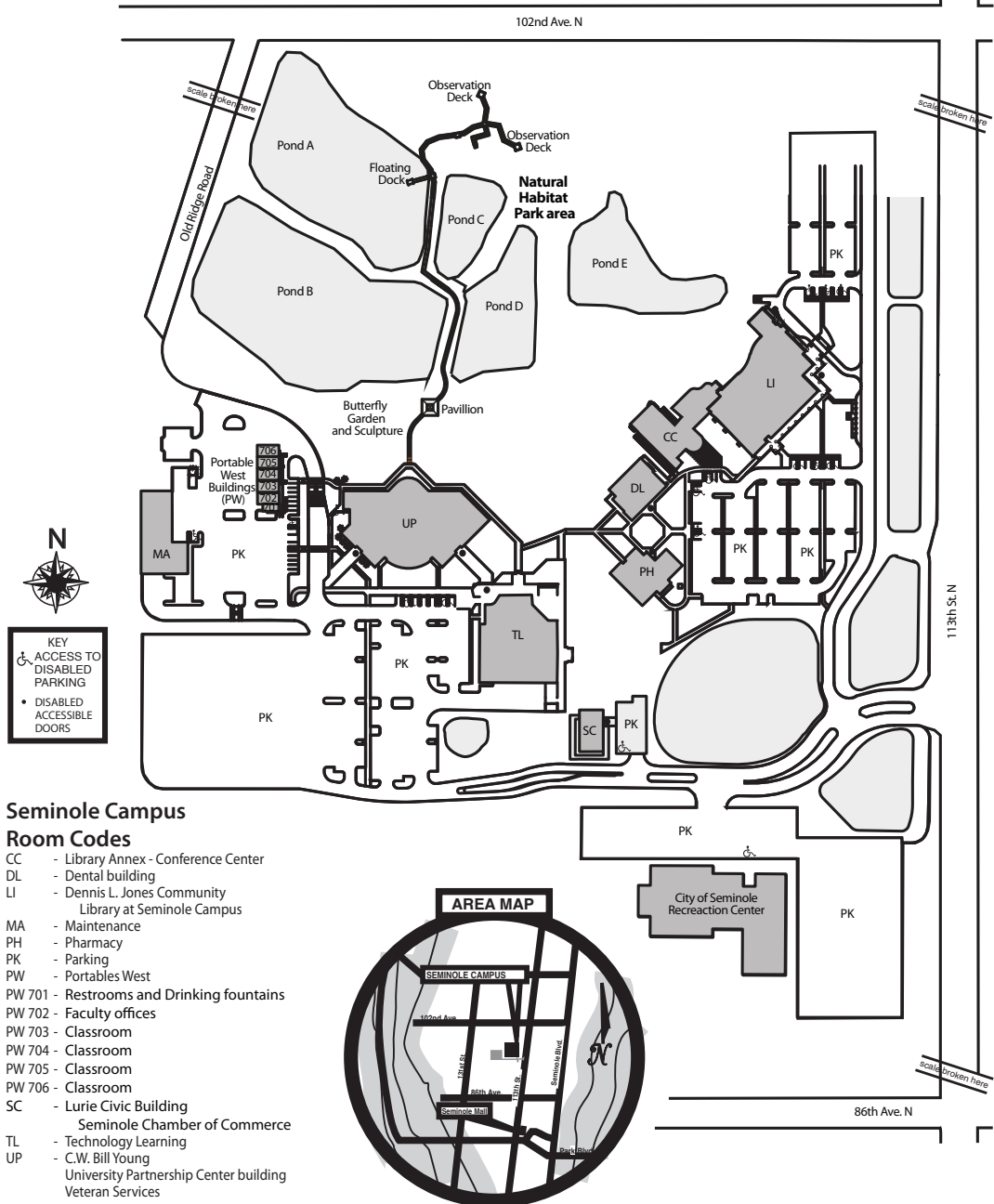
St. Petersburg



SEMINOLE CAMPUS

9200 113th St. N.

Seminole



Seminole Campus

Room Codes

- CC - Library Annex - Conference Center
- DL - Dental building
- LI - Dennis L. Jones Community Library at Seminole Campus
- MA - Maintenance
- PH - Pharmacy
- PK - Parking
- PW - Portables West
- PW 701 - Restrooms and Drinking fountains
- PW 702 - Faculty offices
- PW 703 - Classroom
- PW 704 - Classroom
- PW 705 - Classroom
- PW 706 - Classroom
- SC - Lurie Civic Building
- SC - Seminole Chamber of Commerce
- TL - Technology Learning
- UP - C.W. Bill Young University Partnership Center building
- UP - Veteran Services

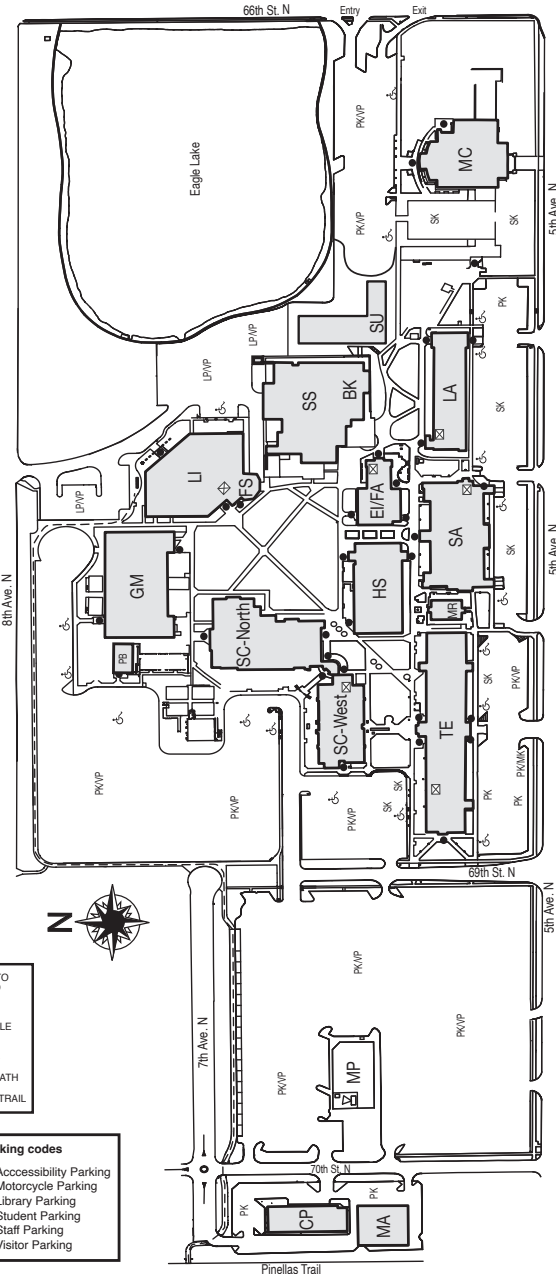
ST. PETERSBURG/GIBBS CAMPUS

6605 Fifth Ave. N.

St. Petersburg

ST. PETERSBURG/GIBBS CAMPUS BUILDING CODES

- EI - ETHICS**
Applied Ethics
Music
- GM - GYMNASIUM**
- HS - HUMANITIES**
Humanities and Fine Arts
- LA - LANGUAGE ARTS**
Communications
- LI - LIBRARY**
Nature's Table Café
Writing Studio
- MA - MAINTENANCE**
Facilities/Receiving
- MC - MUSIC CENTER**
- MR - MIRA**
Music Industry/Recording Arts Studio
- PB - PORTABLE 201**
GED Program
- SA - SOCIAL ARTS**
Mathematics
Social and Behavioral Science
Titan Care Center
 - Assistive Technology Lab
 - Brother to Brother
 - CCAMPIS - Child Care Access Means Parents in School
 - COE - Centers of Excellence
 - CROP - College Reach-Out Program
 - EOC - Education Opportunity Centers
 - FAAME - Florida African American Male Experience
 - Food Pantry
 - PITCH Program
 - RISE Program
 - SAP (Student Assistance Program)
 - Social and Behavioral Science
 - Student Mental Health and Wellness
 - Student Support Services (SSS)
 - Technology Lending Library
- SC - NATURAL SCIENCE**
Criminal Justice
Planetarium
Science
- SS - STUDENT SERVICES**
Bookstore
St. Petersburg Collegiate High School
Student Life and Leadership
- SU - STUDENT SUCCESS CENTER**
 - Level 1**
Accessibility Services
Advising and Registration
Business Office
Career Hub
D6 Co Café
Financial Aid
Security
Testing
 - Level 2**
Conference Center
Learning Resources & Tutoring
Women on the Way (WOW)
 - Level 3**
Center for International Programs
Learning Lab
Provost and Associate Provost
Veteran Services
- TE - TECHNICAL BUILDING**
College of Business
College of Computer and Information Technology
College of Education
Fitness Center



KEY

- ACCESS TO DISABLED PARKING
- DISABLED ACCESSIBLE DOORS
- ELEVATOR
- BICYCLE PATH FROM THE PINELLAS TRAIL

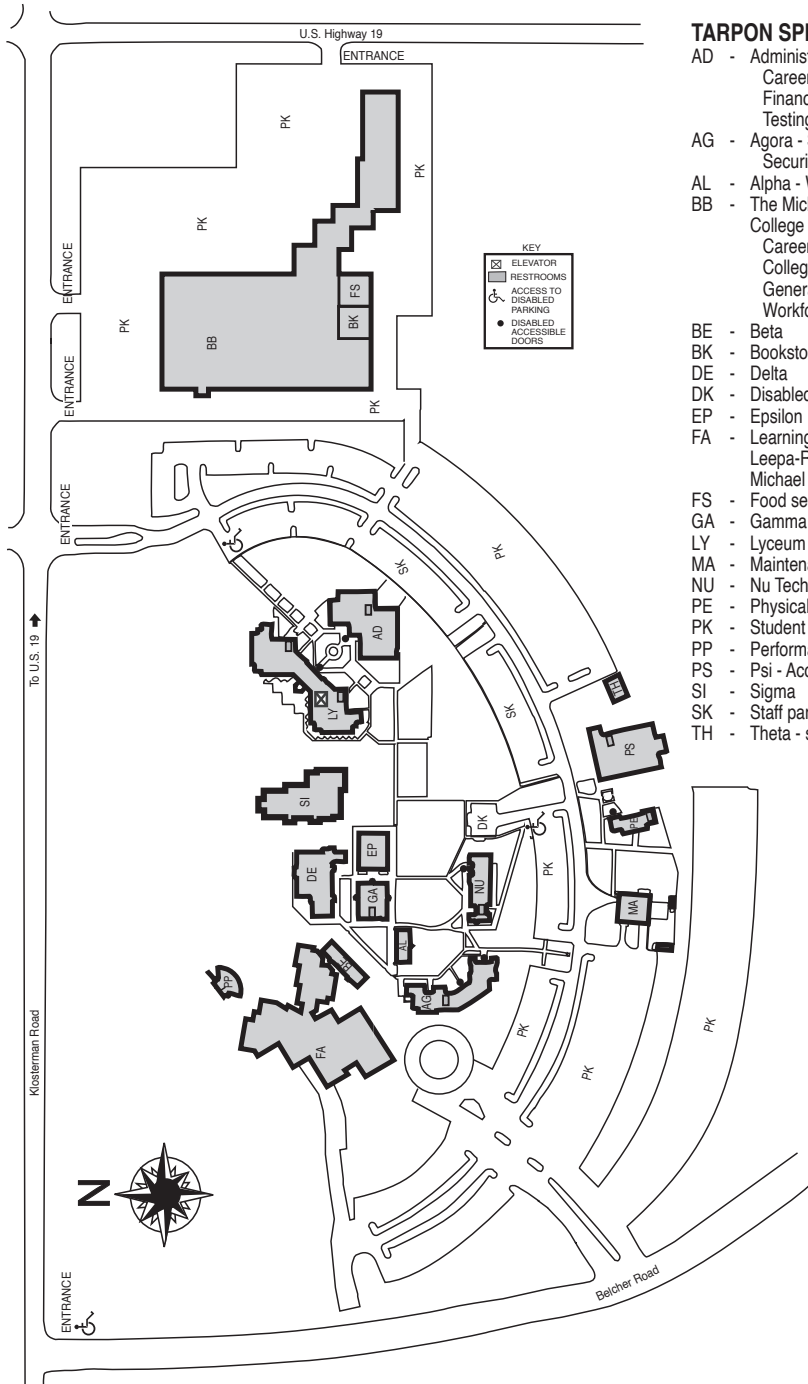
Parking codes

- Accessibility Parking
- MK** - Motorcycle Parking
- LP** - Library Parking
- PK** - Student Parking
- SK** - Staff Parking
- VP** - Visitor Parking

TARPON SPRINGS CAMPUS

600 E. Klosterman Rd.

Tarpon Springs



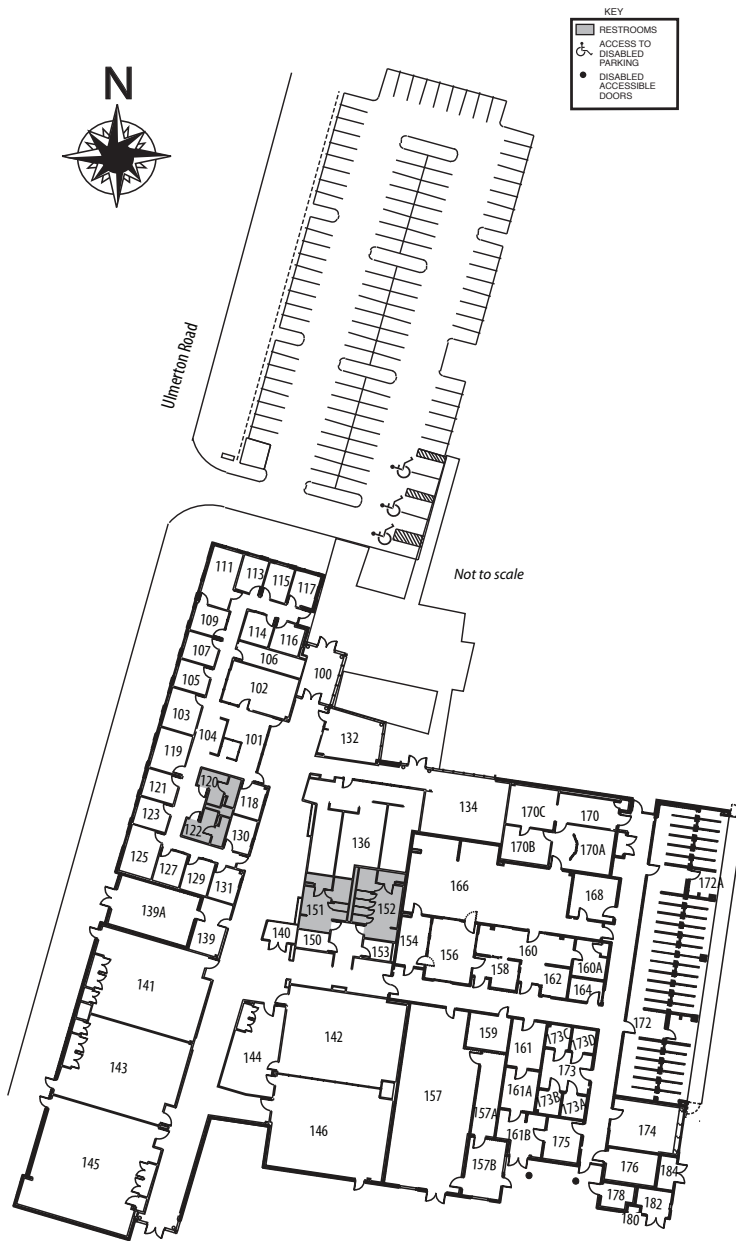
TARPON SPRINGS BUILDING CODES

- AD - Administration -
Career & Advising Center
Financial Aid
Testing Center
- AG - Agora - Student Life and Leadership/
Security/Veterans Services
- AL - Alpha - Women on the Way
- BB - The Michael and Evelyn Bilirakis
College of Education Building -
CareerSource Pinellas
Collegiate High School
General Educational Development (GED)
Workforce Hub/Career Services
- BE - Beta
- BK - Bookstore/Food services
- DE - Delta
- DK - Disabled Parking ONLY
- EP - Epsilon
- FA - Learning Resource Center
Leepa-Rattner Museum of Art
Michael M. Bennett Library
- FS - Food service
- GA - Gamma
- LY - Lyceum
- MA - Maintenance
- NU - Nu Tech
- PE - Physical Education
- PK - Student parking
- PP - Performance platform
- PS - Psi - Accessibility Services
- SI - Sigma
- SK - Staff parking
- TH - Theta - storage

VETERINARY TECHNOLOGY CENTER

12376 Ulmerton Rd.

Largo



SPC Veterinary Technology Center

Room Codes

- 100 -119 - TBA
- 120, 122 - Restrooms
- 121-132 - TBA
- 134 - Student Work
- 136-139 - TBA
- 139A - Mechanical
- 140 - Electrical
- 141, 143 - Computer Lab
- 142 - Anatomy Lab
- 144 - Lab Storage
- 145 - Collaborative Lab
- 146 - Pathology Lab
- 150 - Custodial
- 151-152 - Restrooms
- 153 - Computer
- 154 - Scrub
- 156 - Surgery
- 157 - Mechanical
- 157A - Electrical
- 157B - Generator
- 158 - Recovery
- 159 - Telecommunications
- 160 - Control
- 160A - Pharmacy
- 161 - Food Prep
- 161A - Food Storage
- 161B - Storage
- 162 - Bath
- 164 - Avary
- 166 - Animal Procedures Lab
- 168 - Lab Prep
- 170 - Radiology
- 172 - Dog Ward
- 173 - Lab Animals
- 174 - Cat Ward
- 175 - Isolation
- 176 - Custodial
- 178, 182 - Storage
- 180 - Oxygen
- 184 - Mechanical

Academic Calendar

There are many dates that are important for you to know, such as when classes begin, deadlines for withdrawing, dates of college holidays, and final exam schedules, to name a few. For the most up-to-date information, visit the online Academic Calendar at spcollege.edu/calendar.

Accelerated Credit Options

SPC wants to help you finish your degree. You may bring in up to 45 college credits through your life experience, military training, industry certification, test credit, and articulation agreements recognized by the college. Check with your advisor to learn more about each of these options.

Visit spcollege.edu/earn-free-college-credit

Career and Academic Advising

Career and Academic Advisors will help you get started by discussing your career and educational goals and will be available to guide you throughout your entire SPC experience. At SPC, advisors can help you with registration, course planning, scheduling degree program exploration, transfer information and registration holds, and much more!

We encourage students to meet with their assigned advisor. They are experts in your selected Career and Academic Community. To find your advisor, visit MySPC. Then, click on the My Academics tile and look for My Advisor in the navigation bar. If you have an assigned advisor, you will be able to link to the advisor's webpage for their contact information and schedule an appointment.

Have a quick question? Login to our Virtual Advising Center or walk-in on campus for assistance.

Check out all the ways to connect with an advisor by visiting spcollege.edu/advising.

Computer Labs

Computer labs are available on campuses to meet your academic technology needs. Computers include Microsoft Office and other academic related software. You must have a valid student ID, and, in most cases, an SPC student username and password to log on to a computer. You should also use a flash drive or cloud-based account to save your work. Find out more about locations and hours at spcollege.edu/computer-labs.

Enrollment Verifications

An enrollment verification is an official document verifying your enrollment status, attendance dates, and good academic standing. You can obtain up-to-date information on your enrollment status and student loan notices online in the MySPC portal.

You can:

- Download and print enrollment verification certificates to provide to third parties
- Find out when deferment notices were sent to your student lenders
- View your enrollment history
- View proofs of enrollment sent on your behalf to student service providers
- Get a list of your student loan holders
- Print good student discount certificates

To access the National Student Clearinghouse:

- Log into your MySPC portal
- Choose My Status
- Choose My Academic Status
- Select the Enrollment Verification option from the left hand menu

Excess Hours Advisory Statement

Section 1009.286, Florida Statutes, establishes an "excess hour" surcharge for a student seeking a baccalaureate degree at a state university. It is critical that students, including those entering Florida colleges, are aware of the potential for additional course fees. "Excess hours" are defined as hours that go beyond 120% of the hours required for a baccalaureate degree program. For example, if the length of the program is 120 credit hours, the student may be subject to an excess hour surcharge for any credits attempted beyond 144 credit hours (120% x 120).

All students whose educational plan may include earning a baccalaureate degree should make every effort to enroll in and successfully complete those courses that are required for their intended major on their first attempt. Florida college students intending to transfer to a state university should identify a major or "transfer program" early and be advised of admission requirements for that program, including the approved common prerequisites. Course withdrawals and/or repeats, as well as enrollment in courses nonessential to the intended major, may contribute to a potential excess hours surcharge.

FloridaShines

FloridaShines offers an array of FREE online tools and resources designed to help students succeed in school, earn a college degree, and embark on a rewarding career. Sponsored by the Florida Department of Education, FloridaShines is also the website where SPC students may apply to be transient students at another Florida public college or university. Visit floridashines.org.

Health Program Tutoring/New Initiative Program (NIP)

The New Initiative Program/Learning Support Center provides free tutoring to pre-health and health education students. Visit spcollege.edu/new-initiative-program.

Honors Program

St. Petersburg College's Honors Program provides an exemplary education and an intellectual learning community that encourages our most talented and motivated students in creative and critical thinking and developing research and leadership skills. Consider enrolling in honors classes if you:

- Are a motivated student with a good academic record (3.5 GPA, score of 120 on the reading and writing sections of college placement test)
- Want to take academically challenging classes with other highly motivated students
- Want an honors distinction on your transcript

Honors scholarships are available for qualified applicants. Visit spcollege.edu/honors-program.

International Programs

The Center for International Programs (CIP) offers students international opportunities around the world, as well as across the college and community.

• Study Abroad

Studying abroad is one of the most important experiences you can have. The experience allows for personal growth by changing perspectives and inviting tolerance for different cultures and peoples. It also provides you with the necessary skills to be competent global citizens in the 21st Century. Travel and earn college credit through numerous study abroad programs available through SPC and other colleges, universities, and organizations. Scholarships are available.

Visit stpe.co/studyabroad.

• International Events

You don't have to get on a plane to experience diverse cultures – they are all around us! CIP offers activities on and off campus that will transport students to another culture. For on-campus activities, see our International Events Calendar. For off-campus opportunities, see our GoGlocal Calendar!

Think Global; Act Local.

Both of these calendars can be found at spcollege.edu/international-programs.

• Global Citizen Program

The Global Citizen Program (GCP) is designed to provide students with the knowledge, skills, and attitudes of a competent global citizen who is ready to live and work in a diverse world. The GCP includes curricular and extracurricular components that students complete alongside degree programs.

Get an edge up as you prepare to work in a diverse and global workforce! Visit spcollege.edu/international-programs.

• International Student Services

International students bring intellectual and cultural diversity to our campuses. Students from around the world make SPC their home and provide opportunities for students, faculty, and staff to learn varying perspectives in the classroom and beyond. CIP supports international students to help them succeed academically and become integrated into campus life. Visit

spcollege.edu/international-programs.

Learning Plan Tool

SPC has an online planning tool to help you automate picking classes that meet your degree requirements. Using the planner tool, sometimes referred to as MyLearningPlan, you will stay on track with your degree requirements. Please explore our step-by-step tutorials to learn more.

Visit stpe.co/videotutorial.

Library

Visit your campus library for resources, research and citation assistance, wireless access, study spaces, cloud-based copiers/printers, and technology use. You can check out materials or use any of the services our campus libraries provide by using your student ID. You can also use our online library and Ask A Librarian services to perform research or request assistance at your convenience. Plus, our partnership libraries on the Clearwater, St. Petersburg/Gibbs, and Seminole campuses offer the benefits of a public library and college library, all in one. Visit spcollege.edu/campus-libraries.

MyCourses Learning Management System

MyCourses is the learning management system used at St. Petersburg College to help facilitate all online and hybrid/blended courses, as well as the college's web-enhanced courses offered in a face-to-face or Live Online environment. MyCourses is a convenient online system that provides students with many opportunities to interact with course materials and communicate with instructors and classmates from any internet-connected device, including iPads, tablets, and mobile devices.

To access MyCourses, click Titans Login on the top-right of the SPC homepage and use your SPC email address and password to log in. You will land on your Titan Hub dashboard. Within your Titan Hub dashboard, you will be able to select the MyCourses Widget or click the MyCourses link on the left-side menu. Once you are logged in to MyCourses, the courses in which you are enrolled will appear on the left side of the page. A calendar with important college dates and college news will appear in the middle, along with a list of student resources on the right.

Also available in MyCourses is the "Introduction to MyCourses" course. The course aims to provide an overview of the MyCourses environment and allows students to interact with some of its most commonly used tools. The course consists of five modules and each one covers a topic related to student success and the use of online learning tools.

Online Classes

SPC offers a robust selection of online college courses and fully online programs. Most SPC programs can be completed 100% online. Online students have access to all student support services and the opportunity to participate in college activities either on-campus or online. Learn more about becoming an online student at spcollege.edu/online.

Testing

Taking a College Placement Test (CPT) helps determine what reading, English, and math courses you should register for at SPC. This is not a pass/fail test. Test scores are used to help you decide what level classes you should start with to help you be more successful. SAT and ACT test scores may be used in lieu of the CPT.

The CPT is required unless you entered ninth grade in a Florida public school in the 2003-04 school year or later and graduated from a Florida public high school with a standard high school diploma or serve as an active duty member of the United States military. The college offers college placement tests (PERT, Accuplacer) free of charge for all incoming students. For testing locations and hours, including distance testing, as well as test preparation resources and more, visit spcollege.edu/testing.

Transient Students

At SPC, there are two types of transient students. The first type is an SPC student who wishes to remain degree-seeking at SPC but take a class at another college or university to accelerate degree completion. The second type is a student who is degree-seeking at another institution but wishes to take one or more classes at SPC. Information on both types of transient students and requirements and procedures for approval can be found at spcollege.edu/transient-students.

Transcripts

Your SPC transcript is the official, permanent academic record that includes the classes you have taken, grades earned for each class, honors, and degrees completed. Official transcripts may be ordered by logging into your MySPC account. Visit spcollege.edu/transcripts.

Transferring to SPC

If you attended another college or university and want to attend SPC, you are considered a transfer student. To be admitted to SPC, you will need to submit official transcripts from every regionally accredited college that you've attended. It's very important that SPC receives all of your official transcripts within your first term of admission or re-admission, as it may impact your ability to enroll for subsequent terms. Students enrolled in a degree-seeking program will have a one-term grace period to submit all official transcripts. Giving your complete educational history to SPC allows you to:

- Receive credit for your previous work
- Minimize the potential for repeating courses at SPC that you already successfully completed elsewhere
- Simplify the registration process
- Save you time and money

Please note that limited-access programs may require receipt of all official transcripts for program admission, regardless of accreditation type.

Tutoring and Classroom Support - Free

The Learning Centers provide free on-site and online tutoring for writing, math, and science courses taught at SPC as well as computer assistance to help with software-enhanced coursework, MyCourses navigation, and/or basic computer applications. Make an appointment with our instructional support team at spcollege.libcal.com for optimal service. In addition, Tutor.com provides supplemental on-demand service during evenings, overnights, and weekends for free through MyCourses. All of this support is available whether you are doing well in a class or just need some extra assistance.

Visit spcollege.edu/tutoring.



Academic Policies

College Preparatory Courses

If your test scores indicate that some review is needed, you may be required to take college preparatory classes that do not count toward your degree. These courses teach skills in academic fundamentals, so you'll be ready to meet the challenge of college-level course work. Students who need college preparatory courses are required to take a College Success Skills course. Free tutoring also is available in the Learning Centers at each campus. For students who do not have SAT or ACT scores, the college offers placement tests (PERT, Accuplacer) free of charge.

If you entered ninth grade in a Florida public school in the 2003-04 school year or later and graduated from a Florida public high school with a standard high school diploma or serve as an active duty member of the United States military, then you have choices regarding college preparatory courses. Depending on your decision, you may choose to quickly complete one to two credit courses that target specific areas for improvement, take free work-at-your-own-pace classes to get ready for college-level math, reading and writing, or enroll directly into college-level classes. Our Advising Centers can provide a quick assessment to help you decide what is right for you.

Common Prerequisites

If you plan to enroll in an upper-division program at SPC or transfer to an upper-division program at a state university in Florida, you will need to complete the state mandated prerequisites required for your major as part of your Associate in Arts (A.A.) degree. This means you will not have to take one set of courses to qualify for admission to one university and another set of courses for another university. Limited-enrollment programs may have GPA requirements, but course requirements will be the same across Florida institutions. You can find the requirements for about 250 university majors and track your progress toward completion through the A.A. transfer evaluation tool on the FloridaShines website at floridashines.org.

Academic Appeals

Before lodging a grievance or appeal, you are encouraged to seek an informal resolution with the employee in the department or course faculty directly responsible for the service or department of instruction. If the matter is not resolved during the informal process, you may file a formal grievance or appeal using the appropriate steps provided at spcollege.edu/appeals. When submitting a grievance or appeal, please provide as much information and documentation as possible. For detailed information see Board of Trustees' procedure P6Hx23-4.36 (Student Grievances and Appeals), P6Hx23-4.46 (Program-Based Good Academic Standing, Academic Warning, Probation, Suspension, and Dismissal), and P6Hx23-4.461 (Academic Affairs: Academic Honesty Policies). Visit web.spcollege.edu/botrules for more information.

Academic Honesty Policy

SPC expects you to be honest in all of your academic work. By enrolling at the college, you agree to adhere to high standards of academic honesty and integrity and understand that failure to comply with this pledge may result in academic and disciplinary action, up to and including expulsion from the college. As a member of the college community, you also have an ethical obligation to report violations of the SPC academic honesty policies you may witness. Visit spcollege.edu/student-rights.

Academic Standing Policy

Good academic performance and a clear path to the finish are keys to your success at SPC. These policies, which apply to all students, have been put in place to help you stay focused on your goal and get you back on track if you falter. All degree-seeking students enrolled at SPC must adhere to the Academic Standing Policy. Visit spcollege.edu/student-rights.

Course Load

The maximum course load is 18 credit hours in regular Fall and Spring terms and 12 credit hours in the Express and Summer terms. SPC has developed the Credit Hour Commitment Model to help you determine the appropriate course load for each term. For every one credit hour enrolled, 48 hours of time should be committed. This commitment includes both time spent in class as well as time spent completing assignments and preparing for coursework. For example, a 16-week three credit hour class would require 144 total hours of commitment or nine hours for each of those 16 weeks. Classes that meet for less than 16 weeks will require larger weekly time commitments. Please see the table below. You should consider work, family, and other responsibilities when determining the appropriate course load.

| Session Type | Credit Hours | Total Hour Commitment | Weekly Commitment |
|--------------|--------------|-----------------------|-------------------|
| 16-week | 3 | 144 | 9 hours |
| 10-week | 3 | 144 | 14.4 hours |
| 8-week | 3 | 144 | 18 hours |
| 5-week | 3 | 144 | 28.8 hours |

Repeat Policy for College Credit Courses

You may repeat a course once for which a grade of "C" or higher has been earned. Retaking the course may be allowed if it is required for: (1) teacher recertification, (2) specifications of a regulatory agency, (3) licensure, (4) program requirements, or (5) it is to replace credit earned through examination, i.e. AP, IB scores. Repeating a course to meet program requirements must be for either the purpose of improving the grade to be considered for admission to a specific program or a significant length of time has elapsed since the course was originally taken and you need to update your knowledge to meet current program requirements. Under this provision, the highest grade earned will be used in computing the average GPA.

You may request to repeat a course following the appropriate steps at spcollege.edu/student-rights. See BOT Procedure P6Hx23-4.15 at web.spcollege.edu/botrules (Sec. I).

When you attempt a course for the third or more time, you will pay the full cost of instruction (defined as the out-of-state tuition and fees rate). You may appeal the full cost provision on the basis of extenuating circumstances and on an individual basis related to financial hardship.

You may file an appeal using the appropriate steps provided at spcollege.edu/appeals. Be advised that on the third attempt, students MAY NOT receive a grade of "I," "W," or "X," but must receive the letter grade earned. See BOT Procedure P6Hx23-4.15 on web.spcollege.edu/botrules (Sec. II).

Incomplete Policy

If you are given an incomplete (I) you will have until the end of the next full 16-week term to complete the remaining requirements and receive a permanent grade, or the grade will convert to an "F." This means if you receive an incomplete at the end of Term I, you must complete the remainder of the course work by the end of Term II. The only exception to the time frame is for an "I" granted at the end of Term II. In that instance, you would have until the end of the next 16-week term, which would be Term I of the next academic year. See BOT Procedure P6Hx23-4.15 at web.spcollege.edu/botrules (Sec. IV).

Voluntary Audit/Withdrawal Policy

You must choose the option to audit a course before the end of the drop/add registration period. You may elect to withdraw voluntarily from a course through the last day to withdraw with a final grade of "W." These dates are listed in the academic calendar on the college's website. If you voluntarily withdraw after the last day to withdraw, you will receive a grade of "WF."

If you are a financial aid recipient and are thinking about dropping classes, please consult an advisor to make sure you understand the academic and financial consequences.

Visit spcollege.edu/student-rights.

Register for classes 24/7

Registering for classes online is easier than ever. Make sure to connect with an advisor, preferably your assigned advisor, to ensure your learning plan is up to date. Your approved learning plan will speed up the registration process and help take the guesswork of deciding what courses to take for your program. To register for classes online, log in to MySPC and:

- Check your To-Do List and view holds that might prevent registration
- Check your financial aid status
- Check your student email
- Register for classes

Register as early as possible to get the best schedule. Visit spcollege.edu/calendar for registration dates.

Need Help?

*Tuition**

Lower division courses

In-state, per credit hour\$111.75
 Out-of-state, per credit hour.....\$386.90

Upper division courses

In-state, per credit hour\$122.70
 Out-of-state, per credit hour.....\$425.79

In addition, an Access fee of \$3 per credit hour will be assessed.

* Tuition and fees are subject to change. The most recent rates are posted at spcollege.edu/tuition.

Paying your tuition

Paying your tuition is the last step in registration. It is important that you pay your fees by the due date listed on your fee schedule to avoid being dropped from your classes. Log in to MySPC for your due date and payment amount. Select the My Account tile for additional information and payment options.

- **Residency for Tuition Purposes**
 The amount of tuition you pay is based on in-state and out-of-state fees. To be considered for in-state fees, you must submit specific documentation by the first day of classes. Learn more at spcollege.edu/residency. If you have specific questions about residency, contact residencyquestions@spcollege.edu.
- **How to pay tuition**
 You can pay your tuition online or on campus by visiting spcollege.edu/tuition. If you decide to pay online, please use a browser other than

Safari, as this browser is not compatible for online payments.

- **Tuition Payment Plan**
 SPC offers an interest-free tuition payment plan that is affordable and convenient. To use this payment plan, you pay a percentage up front and an enrollment fee of \$30-\$40, depending on when you apply. Visit spcollege.edu/payment-plan.
- **Florida PrePaid Tuition Plan**
 SPC accepts Florida PrePaid (FPP) college funds. SPC students are no longer required to request that FPP be processed. Please allow one business day after registering for classes for your FPP to be processed and to check your balance due. Visit spcollege.edu/florida-prepaid.
- **Refund Policy**
 Review details on SPC's refund policy at spcollege.edu/tuition-refunds.

Financial aid

Get details at spcollege.edu/financial-aid, and read more later in this section.

After You Register (new students)

- **Review your To-Do List**
 It is important to log in to MySPC to review items that require your attention. These items are commonly referred to as your "To-Do List" and you will also be able to see any communications that SPC has sent to you. Completing your To-Do List items in a timely manner will expedite your becoming fully degree-seeking and will help determine your eligibility for financial aid.
- **Get your Student ID**
 Visit spcollege.edu/student-ID and follow the steps to obtain your ID card online or on campus. Your ID card allows you to check out library materials, attend student events, use computer labs, and use campus wellness centers. You can also enjoy free PSTA bus service with your SPC student ID card.

Select your refund preference

If you are 16 years old as of the first day of classes and enrolled in at least one credit hour, you will receive any refund with BankMobile Disbursements, a technology solution, powered by BMTX, Inc. Visit <https://disbursements.bmtx.com/refundchoices/> for more information.

Athletics

SPC has high-quality intercollegiate athletic teams competing for conference, state, and national championships in women's softball, tennis, volleyball and basketball and in men's baseball and basketball. Our teams compete in Region VIII of the National Junior College Athletics Association (NJCAA). For more information, visit athletics.spcollege.edu.

Bulletin Boards

If you have an event you'd like to promote or an item or service you'd like to sell, contact the campus Student Life and Leadership office for approval to post notices on each site's general-interest bulletin boards. The college reserves the right to restrict commercial postings. Visit spcollege.edu/student-life-leadership.

Clubs and Organizations

Student clubs and organizations are a great way to get involved. SPC has a variety of academic clubs, musical ensembles, and special interest clubs. You can also get involved in your campus Student Government Association. Visit spcollege.edu/student-life-leadership.

Event Calendar

The college offers various events on campus, online, and in the local community throughout the year. Students can attend shows and exhibits at the Palladium Theatre, the Leepa-Rattner Museum of Arts, and productions by our Performing Arts program students. Stay in virtual touch with your campus community and join us for a variety of seminars, workshops, and even trivia nights! Discover more about upcoming events on our social media sites and Titan Connect app. Visit spcollege.edu/social-media and titanconnect.spcollege.edu.

Social Media and Titan Connect

Connect with SPC online to keep up with college news, events, and more. You can find all of SPC's social media accounts at spcollege.edu/social-media. Titan Connect is your portal to get involved. Search events, look up student organizations, connect with resources and find out what's happening today! Visit titanconnect.spcollege.edu or download the app by searching for Modern Campus Presence on your mobile device.

Student Lounges

Most campuses have a student lounge where students can relax, study, watch TV, play pool, table tennis, and other games.

Student Publications

Explore SPC publications at spcollege.edu/social-media. The official student newspaper of SPC is available at Sandbox.spcollege.edu.

Student Recreational Activities

SPC sponsors many intramural and recreational activities that provide friendly, organized competition. These include basketball, table tennis, bowling, flag football, volleyball and soccer. Each student is responsible for accident insurance. Stop by the Student Life and Leadership Office for details. Visit spcollege.edu/student-life-leadership.

Volunteer

SPC looks forward to welcoming you as an integral part of our volunteer team. Check out exciting volunteer opportunities at spcollege.edu/volunteer and get involved. Your time, knowledge, and experience can make a significant difference in the lives of our dedicated students. We appreciate our volunteers' consideration and sincerely value their service.

Wellness Centers

Our wellness centers are equipped with resistance machines, free weights, and various cardiovascular machines such as treadmills, exercise bicycles, and StairMasters. These workout facilities are free of charge and open when they aren't being used by a physical education class. Visit spcollege.edu/wellness-centers.



Accessibility Services

Accessibility Services carries out SPC's commitment to the open-door concept and equal access to educational opportunities for all qualified individuals with disabilities. Accessibility Services coordinators and staff oversee a variety of services, including classroom and testing accessibility, sign language interpreters, assistive technology, and training through the Accessibility Services office on each campus. Visit spcollege.edu/accessibility-services.

Campus Safety

SPC is dedicated to providing a safe campus environment. If you have concerns about suspicious behavior or an unsafe situation, report it promptly to campus authorities or to collegewide Security at 727-791-2560. In an emergency, call 911 then notify the security office. Visit spcollege.edu/safety-security and spcemergency.com for:

- Emergency numbers
- Safety Tips
- Crime and OSHA reports
- Sexual offender list
- Reporting suspected abuse
- Reporting sexual violence and misconduct
- Emergency Response Guide
- Emergency Management Plan
- Hurricane preparedness
- Parking rules
- Weapons on campus policy

Career Services

SPC Career Services can help you select a career direction and the appropriate program of study. We can help with personal assessments, career exploration, and choosing an SPC major. In addition, we help you prepare a job search strategy, discover internship opportunities, develop a resume, and more. Learn about our free career tools, events, and services at spcollege.edu/career-services.

Children on Campus

Other than in an emergency when specifically approved by the campus provost, the provost's designee or a supervisor, employees and students shall not bring children to work or class other than for an occasional quick visit, to drop off a paper, pick up materials, or other similar activities.

In no case is a child to be left unattended on the college premises. If there are questions about the procedure, contact the provost or associate provost on your campus.

Commencement

Commencement is the event or formal celebration of the degree being earned. It is a time for you to receive well-deserved recognition for your hard work. Graduation ceremonies for the college are held two times a year, at the conclusion of the fall and spring terms. Students who complete graduation requirements in the summer term may participate in either the spring or fall ceremony. Since SPC holds the graduation celebrations prior to degrees being verified, students are considered a candidate for graduation. For question regarding the commencement ceremony and other graduation events, visit spcollege.edu/graduation.

Emergency Preparedness

SPC's Office of Emergency Management is dedicated to the safety of students, staff, and visitors. For all emergency situations (hurricane, tornado, bomb threat, evacuation, etc.), students should stay informed by visiting SPC's Emergency and Hurricane Preparedness website at spcemergency.com, and by registering their phones for SPC Emergency Alerts in their MySPC profile under My Personal Information menu, select Phone Numbers to update home and/or cell number. Select Emergency Notification to confirm if you want to be contacted by cell phone and/or text message and hit Save. Then text YES to 68453 from your cell phone to opt-in for texts. (Persons opted in in the past do not need to opt in again.) We encourage students and staff to read the Emergency Response Guide posted in each building, know where to go during an emergency situation, and have a plan for anticipated emergency situations. **Being prepared is everyone's responsibility.** Updates can also be found by calling or visiting the sites below, and via local news outlets:

- Emergencies – Call 911
- Call SPC Security – 727-791-2560
- Visit SPCemergency.com
- SPC toll-free number – 866-822-3978
- MySPC login – Register your cell phone for emergency alerts

Food Services

Nearly every campus has a place to snack between classes. Explore your options at spcollege.edu/food-services.

Graduating From SPC

Graduation refers to the term in which you have officially and successfully completed all of your degree requirements and the degree is recorded on your official transcript. Email notifications will be sent to students who have been identified as eligible for graduation to the student's SPC email account within six weeks after the term begins. At the end of each term, students who meet all graduation requirements will automatically be awarded their degree or certificate. Students are responsible for determining all graduation requirements are complete. Please review your progress by logging in to MySPC and choosing the My Academics tile, then choose Academic Progress in the navigation bar. It is highly recommended that you meet with your Academic Advisor prior to your last semester in order to review your records and ensure all graduation requirements will be met. For further details, visit spcollege.edu/graduation.

Housing

There are no residence halls at SPC. However, there are several apartment complexes near each college site.

Insurance

The college does not provide accident or health insurance for students. Optional student insurance may be obtained from an insurance company at the student's expense. Certain courses require the student to obtain insurance for which a special fee is charged. Visit spcollege.edu/student-insurance.

Internships

Internships are supervised, practical learning experiences in a work setting related to your program of study. Through course assignments and workplace projects, you will apply, connect, and extend academic theory and competencies for the purpose of building professional skills and affiliations. Contact internship staff at 727-341-3019 for more information, or go to the internship website at spcollege.edu/internships.

Parking

Parking is free on most SPC campuses, as long as you park in spaces marked and reserved for students. Students are urged to register their vehicle with SPC security at spcollege.edu/parking.

PSTA Bus Pass

Through an agreement between PSTA (Pinellas Suncoast Transit Authority) and SPC, students, faculty, and staff can enjoy free bus service through the Universal Pass, or UPASS. Simply show your current student or staff ID when boarding a PSTA bus and you can ride for free. Visit spcollege.edu/bus-service.

Student Assistance Counseling Program

If you need support, advice, or just a friendly ear, help is only a phone call away. SPC offers this service FREE to SPC students. Visit spcollege.edu/counseling-services.

Student ID/Library Card

Your student ID card allows you to check out library materials, attend student events, use computer labs, and use campus wellness centers. You can also enjoy free PSTA bus service with your SPC ID card. Visit spcollege.edu/student-ID and follow the steps to obtain your ID card online or on campus.

Student Support Services Program

Student Support Services (SSS) is a federally funded grant program under the Department of Education. SSS is a limited access program in which services are provided to first generation and limited-income students. SSS provides services such as tutoring, academic advisement, textbook & laptop lending, scholarships, cultural events, and a list of additional services to ensure retention and graduation. Visit spcollege.edu/sss.

Technical Support Center

From registration to coursework to email and everything in between, the support center can assist with technical issues related to MySPC, MyCourses, student email, and other technology-related issues. Hours are 7 a.m. to midnight, seven days a week, with the exception of federal holidays and some college closed dates. They can be reached at 727-341-4357 or via email at onlinehelp@spcollege.edu. Visit support.spcollege.edu for more information.

Textbooks

You can purchase or rent new, used, or digital books at bookstores operated on campus and online by Barnes & Noble. You can automatically order your textbooks after registering in MySPC and have them shipped to your home or pick them up at any Barnes & Noble bookstores on campus. If you are receiving financial aid and your aid exceeds your tuition and fee charges, you may purchase books and supplies using our Book Line of Credit, a short-term, interest-free loan at our campus bookstores. Visit spcollege.edu/textbooks.

Titans Care Centers

SPC is here to help you navigate student life and offers assistance in several areas to help you stay safe and healthy. Whether you need child care assistance, community resources for life issues, counseling services, food pantries, or free bus rides, we are here to help. Visit spcollege.edu/titans-care-resources for more information.

Veterans Services

SPC has been consistently named one of the top veteran-friendly colleges in the country. Veterans Services student support staff will offer help with Department of Veterans Affairs (VA) educational benefits. Veterans Services Student Support Centers on campus provide specialized resources to Veterans, eligible dependents, active duty servicepersons, and members of the Selected Reserve. Visit spcollege.edu/veterans-services.

Women on the Way (WOW)

Through collaboration and support, Women on the Way (WOW) empowers and inspires students to be resilient in achieving success. The program has been helping women succeed since 1981. WOW, located on SPC's Clearwater, Seminole, and St. Petersburg/Gibbs campuses, serves as a resource and support program designed to meet the educational needs of enrolled students who are seeking to complete a college degree or certification. Visit spcollege.edu/wow.



Not sure how to pay for college?

Financial Assistance Services provides guidance on grants, scholarships, student employment, and loans to help pay college expenses. Online student services keep the same hours as you – 24/7/365. Log in to MySPC for instant access to your financial aid information under the Financial Aid tile, or visit spcollege.edu/financial-aid for a step-by-step checklist to apply for financial aid and the most up-to-date information on a wide range of topics.

FSA ID (Federal Student Aid ID)

Create your FSA ID at fafsa.gov before beginning to complete the FAFSA. It only takes a few minutes, allows some data to autofill in the FAFSA and could prevent processing delays.

FAFSA (Free Application for Federal Student Aid)

To apply for financial aid, you need to complete a Free Application for Federal Student Aid (FAFSA) at fafsa.gov. The information you provide determines whether you qualify for federal and state grants and federal work-study and loans.

Calculating your Financial Aid Award Package

Federal and other types of financial aid are based on financial need. Using the data collected on the FAFSA, financial need is calculated as follows:

Cost of Attendance less Expected Family Contribution = Financial Need

We use this formula and individual fund requirements to determine your financial aid awards.

Visit spcollege.edu/financial-aid-award-package.

Receiving Funds

You begin receiving financial aid refunds at the end of the fourth week of classes of the earliest session in which you are enrolled. If you are enrolled only in Express Session or Second 8 Week Session, your financial aid will be refunded at the end of the fourth week of that session. It is your responsibility to understand the attendance policies of all courses in which you are enrolled. Visit spcollege.edu/receiving-financial-aid.

Tuition and Fees

SPC deducts tuition, fees, the Book Line of Credit and the First Day Book Program charges from your financial aid award amount. If your award amount is less than the cost of tuition, fees, the Book Line of Credit and the First Day Book Program, you must pay the difference by the tuition due date. Visit spcollege.edu/receiving-financial-aid.

Less than Full-Time Enrollment

If you attend less than full-time during any term, your Cost of Attendance and financial aid award amounts will be adjusted. This could result in a reduction or removal of loans or other financial aid. Visit spcollege.edu/less-than-full-time-enrollment.

Book Line of Credit

If your financial aid exceeds your tuition and fee charges, you may charge up to \$800 in books and supplies using the Book Line of Credit (a short-term, interest-free loan) at campus bookstores.

The amount of your Book Line of Credit is based on projected financial aid that will be refunded at the end of the fourth week of your classes. The bookstore will have your information on file and will apply your available book charges against your student account. Visit spcollege.edu/book-line-of-credit.

Disbursements

Disbursements occur when SPC receives federal, state, or other funds on your behalf. These funds are disbursed to your student account to cover your tuition, fees, the Book Line of Credit and First Day Book Program charges. The disbursement date is the date you will see in MySPC; however, this is not the date your excess funds are refunded to your refund option choice.

Loan disbursements – If your loan is for fall and spring, it will be disbursed in two payments, one half during the fourth week of your fall enrollment and one half during the fourth week of your spring enrollment. If your loan is for one term only, the entire loan will be disbursed in one payment during the fourth week of your enrollment for that term. Visit spcollege.edu/financial-aid-refunds.

Refunds

Financial aid refunds occur when the amount of the disbursements received on your behalf is greater than the amount owed for tuition, fees, the Book Line of Credit and First Day Book Program charges. The excess funds will be refunded to the refund option choice you made with BankMobile Disbursements, a technology solution, powered by BMTX, Inc. Visit <https://disbursements.bmtx.com/refundchoices/> for more information. Financial aid refunds begin at the end of the fourth week of classes of the earliest session in which you are enrolled. Visit spcollege.edu/financial-aid-refunds for refund dates and other details.

Student Employment Pay

Students working through student employment programs of Federal Work Study, America Reads, America Counts, or Student Assistants will receive their paychecks bi-weekly through their supervisor or directly deposited into their bank accounts. Visit spcollege.edu/student-employment.

Satisfactory Academic Progress

Federal regulations require that all students who receive financial aid demonstrate that they are moving through their academic program at a reasonable rate and are making progress toward their degree in order to continue receiving financial aid. Visit spcollege.edu/sap.

Withdrawing from Class

CAUTION: If you are a financial aid recipient and are thinking about dropping one or more classes or withdrawing from the college, please consult a financial aid counselor first to be sure you understand the consequences of this decision. Visit spcollege.edu/withdrawals.

It's MY FUTURE!

St. Petersburg College provides FREE, easy-to-use loan management and planning tools so you can afford to finish your education without accumulating a pile of debt. Our best advice is:

- Don't borrow if you don't have to.
- If you need to borrow, borrow only what you need.

- Stay in contact with your student loan servicer to stay on top of what you owe.
- On-time repayment will help you establish a good credit rating.

lonTuitionTM, an online student loan management tool available through a single sign-on process in MySPC, makes it easy to manage your student loans all in one place! You may see your loan status, balance, payment amount, due date, interest information, and servicer contacts. You can elect to receive loan status notifications via email or text. A live chat option is available.

lonTuitionTM is also available to help with any questions regarding repayment of your student loans. Talk with an experienced counselor about repayment and postponement options. If you receive a call from lonTuitionTM, they are calling on behalf of SPC. Visit spcollege.edu/its-my-future.

CONTACT US

Financial Assistance Services is here to help! Ask questions using the most convenient method for you. Choose from:

- **PHONE** – Call 727-791-2485
- **PETE** – Our chatbot answers questions 24/7/365. To find PETE, go to spcollege.edu/financial-aid or any other financial aid webpage and look in the lower right corner.
- **ONLINE** – Submit your question online at spcollege.edu/askfas and select the "Online" tab.
- **VIRTUAL** – Speak with a live SPC financial aid counselor at spcollege.edu/askfas and select the "Virtual" tab.
- **ON CAMPUS** – Find campus hours and locations at spcollege.edu/askfas and select the "On Campus" tab.
- **WEBSITE** – Search spcollege.edu/financial-aid for detailed information, including instructional videos, on all financial aid topics.
- Student loan questions can be answered by logging into lonTuitionTM through MySPC or by calling 855-693-4932.

The most up-to-date student and academic information is available on the college website, spcollege.edu. Access important information about Board of Trustees Rules and College Procedures, students' rights and responsibilities, as well as student privacy and other policies and procedures at web.spcollege.edu/botrules.

Student Right-to-Know

Compliance and policy information for the following topics can be found at spcollege.edu/student-rights.

Academic Policies

- Academic Calendar
- Academic Honesty Policies, Honor Code
- Academic Integrity Policies and Procedures
- Academic Standing Policy
- Accreditation
- Articulation Agreements
- Attendance
- Auditing Classes Procedure
- College Catalog
- College of Education 2020-21 Title II EPI Report
- College of Education 2020-21 Title II ITP Report
- Course Repeat Procedure
- Current degree programs – Degrees + Training
- Current degree programs – Program Explorer
- Disciplinary Procedure
- Drop with a Refund
- Faculty and Instructional Personnel
- Faculty Resources
- Family Educational Rights and Privacy Act (FERPA)
- Florida Virtual Campus
- General Educational Development (GED)
- General Education Requirements
- Grading System
- Health and Safety Exemption Requirement
- Health Program Admissions
- Incomplete Grades Procedure
- Online Services
- Professional Licensure Disclosure
- Residents Outside of Florida and Professional Licensure
- Student Code of Conduct
- Student Ombudsman Office
- Student Organization Procedure
- Teach-Out Plan (Substantive Change)

- Transfer of Credit Procedure
- Withdrawal
- Warning, Probation, Suspension and Dismissal Procedure

Admissions

- Academic Programs
- Admission
- Admission Application
- Compensation for Recruiters and Admissions Staff
- Future Titans
- Program Admission Requirements
- Readmission
- Transfer Credit

Safety and Security

- Access to SPC Campuses
- Annual Security Report
- Campus Crime Reports
- Daily Crime Log
- Emergency Response/Evacuation
- Missing Student Notification Policy and Procedure
- Parking
- Reporting Abuse of a Minor
- Reporting a Crime/Important Numbers
- Safety Tips
- Sexual Harassment Policies and Information
- Sexual Offenders and Predators List
- Sexual Violence and Misconduct
- Threat Assessment
- Timely Warnings and Emergency Notifications
- Weapons and Firearms on Campus

Disputes and Appeals

- Complaints
- Contact SPC
- Discrimination Policy and Information
- Equal Opportunity/Equal Access
- Grievances and Appeals
- Student Ombudsman Office

Health

- Accessibility Services
- Drug and Alcohol Abuse Prevention
- Hepatitis B
- HIV/Aids Education
- Meningococcal Meningitis
- Student Assistance Program
- Tobacco/Smoke Free Campus Procedure (adopted August 2016)
- Vaccination Policy

Statistics

- Bachelor's Degrees
- Employment, Continuing Ed and Annualized Earnings by Year, select AS FETPIP Dashboard
- College Navigator
- Facts and Enrollment Statistics
- Florida College Transfer Students Attending Florida Public Universities
- Graduation Rates
- Graduation Rates for Certificate programs
- Graduation Rates for Student Athletes
- Net Price Calculator
- Placement Rates
- Retention Rates
- SPC Fact Book
- State's Economic Security Report
- Student Body Diversity
- University Partnership Center

Financial

- Have a financial aid question? Ask PETE, our chatbot, or ask online, virtually, on campus or by phone
- Available Financial Aid
- Apply for Financial Aid
- Avoiding Student Aid Scams - what to watch for and how to report them
- BankMobile Disbursements
- Calculating Your Financial Aid Award Package
- Campus Based Policy
- Contact SPC
- Cost of Attendance
- Degrees and Training
- Dependency Overrides
- Direct Loan (Federal Direct Student Loan)

Model Disclosure Form

- Federal Pell Grant
- Financial Aid Contacts
- Financial Aid Eligibility Requirements
- Financial Aid Refunds
- Grant Assistance From Your Home State
- It's MY FUTURE! Financial Literacy Program
- Last Day To Drop With A Refund (Drop/Add Policy)
- Net Price Calculator
- Private Student Loans
- Professional Judgement (includes Dependency Override)
- Refund Policy
- Return to Title IV Policy
- Rights and Responsibilities of Financial Aid Recipients (known as SPC as Conditions of Financial Assistance)
- Satisfactory Academic Progress (SAP)
- SPC Tuition Refunds
- Student Aid Eligibility Worksheet, select Possessing or Selling Illegal Drugs
- Student Complaints
- Student Grievances and Appeals
- Student Loan Entrance Counseling
- Student Loan Exit Counseling
- Study Abroad Financial Aid Eligibility
- Textbook Information
- Tuition and Fees
- Verification
- Withdrawals (includes Official and Unofficial Withdrawals and Return to Title IV Funds)

Other

- College Navigator
- Copyright Regulations
- Compliance Statements
- Constitution Day
- Establishing and Maintaining an Information Security Program
- Information Technology Acceptable Use
- Information Security and Privacy Policy
- Peer-to-Peer File Sharing
- Privacy Policy

- Refund Procedure
- Social Security Number Usage
- Study Abroad
- Third Party Servicers involved in Marketing, Recruitment and Admissions and the Administration of Title IV Financial Aid
- Voter Registration

Appeals Process

SPC values due process and fundamental fairness in its policies and procedures. Students may appeal certain determinations made and actions taken by the college according to the **Board of Trustees Student Grievances and Appeals Procedure** P6Hx23-4.36 located at spcollege.edu/BOTrules. An appeal is a formal request asking for a change in a determination made or actions taken by the college; when submitting a grievance or appeal, please provide as much information and supporting documentation as possible. For additional information on appeals and to submit an appeal online, visit spcollege.edu/appeals.

Complaint Policy

SPC is always looking for ways to improve. We are committed to providing prompt and fair resolution of all student concerns and strive to make the process of communicating such concerns as easy as possible. We take these concerns very seriously and the information below outlines this process. Examples of student complaints related to this policy include matters relating to college facilities (services received, facilities, etc.) or other services such as the college bookstore, student services, or campus cafeteria. To make a formal complaint:

1. Access the college's Student Complaint website at spcollege.edu/complaint.
2. Complete and submit the online complaint form. If you are unable to submit an electronic form, a college employee may submit the form on your behalf.
3. Your complaint will be routed to the appropriate department and you will receive confirmation of receipt within 24 hours (not counting days the college is closed) that the complaint has been received.
4. The complaint will be processed and you will be notified of the resolution in writing.

Academic appeals and student grievances are not considered complaints and should be lodged

through the formal student grievance/appeal process found in the SPC Board of Trustees Rules and College Procedures (P6Hx23-4.36). If you have an academic grievance or appeal, please utilize this process. Students or third parties who have a disability related grievance and who are alleging disability discrimination in violation of Section 504 of the Rehabilitation Act of 1973 should see College Procedure P6Hx23-4.364 and follow this process. Visit spcollege.edu/student-rights for more information.

Conduct

SPC students are expected to conduct themselves in a manner that will reflect credit to the college, the community, and themselves. Each student, by registering, assumes the responsibility to become familiar with and abide by the general regulations and rules of conduct outlined at spcollege.edu/student-rights.

Controlled Substances, Alcoholic Beverages, Tobacco, Smoking and Marijuana Drug-Free Campus and Workplace – Drug and Alcohol Prevention Program

St. Petersburg College ("College") is committed to providing a safe academic and workplace environment in compliance with the provisions of the Federal Drug-Free Schools and Communities Act of 1989 and the Drug-Free Workplace Act of 1988, applicable local, state, and federal laws, rules, and regulations. As a result, the SPC Code of Conduct Procedure P6Hx23-4.33, prohibits the unlawful manufacture, sale, possession, use, or distribution of illicit drugs (including drug paraphernalia and prescription medication without a prescription) and/or alcohol by College students or employees on College premises or as part of any College program or activity. The College's Drug and Alcohol Abuse Prevention Program describes: 1.) The applicable legal sanctions under local, state, or federal law for the unlawful possession or distribution of illicit drugs and alcohol. 2.) The health risks associated with the use of illicit drugs and the abuse of alcohol. 3.) drug or alcohol counseling, treatment, or rehabilitation or reentry programs that are available to employees or student. 4.) The disciplinary sanctions the College may impose. Sanctions for violations may include, in severe cases, suspension and dismissal from the College, as well as criminal penalties related to

Florida Statute Chapter 893 and/or any applicable state or federal laws. Visit stpe.co/flstatutech893 for more information. See BOT Procedure P6Hx23-2.02 for a complete description of the College's Drug and Alcohol Abuse Prevention Program.

Tobacco and Smoke Free Policy

SPC is a tobacco and smoke free college. Smoking and/or the use of any tobacco is prohibited in all College facilities and on all College property, without exception, including but not limited to, all buildings and portions of buildings owned or leased by the College, including, without limitation, atria, entry ways and enclosed hallways within buildings. Outdoor areas include, but are not limited to, parking lots, grounds, rooftops, plazas, courtyards, entrance and exit ways, and any other areas of the College campus. See BOT Procedure P64x23-1.37.

Marijuana and Medical Marijuana

State law does not require the College to accommodate the use of medical marijuana in the classroom, in the workplace, or by individuals attending class or working while under the influence of marijuana. The manufacture, selling, dispensation, possession, use, distribution, or being under the influence of marijuana for medical purposes is not allowed on any College property, at any College-sponsored event, or as part of any College activities for any purpose by employees or students.

Copyright Regulations

SPC supports and encourages its employees and students to develop scholarly and creative works and educational materials and products (intellectual property) which may be subject to copyright, trademark, or patent regulations and which may generate royalty income. Also, ownership in a work prohibits another's copying of the work or distributing copies of the work unless one or more of the following apply:

- the work was never copyrighted
- the copyright in the work has expired
- the work lies in the public domain
- the copying and/or distribution falls within "fair use" privileged under Section 107 of the Copyright Act of 1976
- the copying and/or distribution falls under certain library or archival copying privileged under Section 108 of the Copyright Act of 1976

- the copyright owner has given appropriate permission

The College's rules and procedures are designed to balance, protect, and define the respective rights of St. Petersburg College, its employees and students regarding intellectual property and copyright laws. Refer to Board of Trustees' Rules and Procedures 6Hx23-1.35, P6Hx23-1.35, P6Hx23-1.351 for copyright policies and a description of published and unpublished materials that may be subject to copyright regulations. Visit web.spcollege.edu/botrules for more information.

Discrimination

SPC does not tolerate discrimination in its employment practices or in the admission and treatment of students. All SPC employees and students are responsible to adhere to SPC's Nondiscrimination Policy. Violators are subject to disciplinary action, which may include reprimand, suspension, or dismissal. For information on types of discrimination, College policies, and reporting information, visit spcollege.edu/discrimination.

HIV/AIDS

Information on the Human Immunodeficiency Virus and its prevention can be found at hivinfo.nih.gov.

Reporting Abuse of a Minor

Under Florida Law, all persons have a legal obligation to report suspected instances of child abuse, neglect or abandonment, regardless of whether an alleged perpetrator is the child's parent, legal custodian, caregiver or other person responsible for the child's welfare. Get more information on reporting obligations at the Florida Abuse Hotline (1-800-962-2873) or online via the website Florida Department of Children and Families website.

In addition, Florida college administrators are obligated to timely report, under penalty of law, any knowledge or reasonable suspicion that an abuse, neglect or abandonment of a minor has occurred on college property or during a college sponsored activity, event or function. All students and employees who have knowledge of, or have reasonable cause to suspect, the abuse, neglect or abandonment of a minor on campus must report such knowledge or suspicion to Campus Security (727-791-2560) and to the Campus Provost, and as

may be appropriate, to the Florida Abuse Hotline. Remember, if there is an emergency, first dial 911 for emergency assistance, and then Campus Security. Failure to properly report may result in substantial institutional sanctions and employee discipline.

For more information regarding the definitions of abuse and neglect, sanctions for non-compliance, and reporting obligations of college employees, please see the Board of Trustees' College Procedure at Reporting Abuse of a Minor.

Safety Reports

SPC's Security Department is dedicated to the safety of students, staff, and visitors by providing quality services and information to help make the time that you spend at SPC safe and enjoyable. Visit spcollege.edu/student-rights for current reports on:

- Criminal activity on campus/neighborhood area
- Sexual Offenders List
- OSHA Report

A hard copy of the safety reports will be provided upon request.

Sexual Harassment

SPC has a strong commitment to keeping its workplaces and classrooms free from sexual harassment. The responsibility for doing so rests with each member of the college community. For information on types of sexual harassment, frequently asked questions, and reporting contacts, visit spcollege.edu/sexual-harassment.

Sexual Violence and Misconduct

SPC is committed to preventing sexual violence (including sexual assault) and sexual harassment on all of its campuses and other facilities. For more information on sexual violence and misconduct on campus, including SPC's policies and procedures, reporting information, what is prohibited, penalties, victim's rights, available resources, and more, visit spcollege.edu/sexual-misconduct.

Student Records

Students and eligible parents and guardians have the rights as afforded by the Family Educational Rights and Privacy Act (FERPA) to:

- Inspect and review education records within 30 days of the day the college receives a request for access

- Request the amendment of a student education record the student believes is inaccurate
- Consent to disclosures of personally identifiable information contained in the student's education records, except to the extent that FERPA authorizes disclosure without consent
- Obtain a copy of the college's policy on student records from the office of the Associate Provost on each campus, center, or site
- Restrict the release of college directory information, which can be done in the "My Information" section of MySPC
- File a complaint concerning any and all alleged failures of a state college to comply with the requirements of FERPA with the Family Policy Compliance Office, U.S. Department of Education, 400 Maryland Avenue SW, Washington, DC 20202-5901

For more information on FERPA, what constitutes directory information, and how to exercise your right to restrict access to it, visit spcollege.edu/student-rights.

Students also have a responsibility to keep the information in their student record up-to-date. Some of these changes (address, phone number, home email) can be done by the student in MySPC under the Profile tab. However, name, date of birth, and social security number changes must be initiated by the student completing a Request for Change of Official SPC Records form and submitting it to the Admissions and Records Department. Forms can be found at spcollege.edu/forms-online.

Service Animals

SPC is committed to providing a learning and work environment that is inclusive of all and welcomes those with service animals on campus and in the classroom, as well as at all college activities and events.

For more information on the use of service animals, please see Board of Trustees Rules and College Procedures 6Hx23-1.251 and the Information for Individuals Using Service Animals page at spcollege.edu/service-animals.

NOTES

Lined writing area with horizontal lines for notes.

St. Petersburg College





2023-24 STUDENT PLANNER

TASKS

- _____
- _____
- _____
- _____
- _____
- _____
- _____
- _____
- _____
- _____
- _____
- _____
- _____
- _____

DON'T FORGET!



TITAN CONNECT

YOUR COLLEGE EXPERIENCE AT YOUR FINGERTIPS!

Titan Connect is your portal to get involved. Download the mobile app to:

- Search for college events and activities
- Look up student clubs and organizations
- Connect with helpful resources
- Find out what's happening today at SPC!

Visit titanconnect.spcollege.edu or download the app by searching for Modern Campus Presence on your mobile device.

EASY TO USE AND MOBILE FRIENDLY





spcollege.edu