

## COMING **FALL 2015**

### ▶ **SMART START**

After three years of providing new students with a face-to-face orientation before they begin classes, the data clearly shows that students who attend orientation are more successful in their classes. This fall, SPC will launch Smart Start Orientation, a free, non-credit course that includes an initial orientation, and four learning sessions to help students start smart and finish strong. The classes will be offered face-to-face, and in blended and online formats. Smart Start will be required for first-time SPC students seeking an A.A. or A.S. degree and students returning from suspension or dismissal, introducing them to the college and all of the College Experience success initiatives.

### ▶ **ACADEMIC PATHWAYS**

We offer academic and career pathways that give students a clear road map to graduation. By laying out which courses students need to take, and in what order, they save time and money by focusing on classes that will help them progress toward a degree. Also, these pathways include "on and off ramps" so students can gain industry certifications that will get them into the workplace quicker, to begin earning money sooner. Best of all, these certifications also count toward a degree. So, when students are ready to come back and finish, they will already have credits under their belt. Our Academic Pathways are designed to take the guesswork out of course selection and sequencing for students, so they have a clear vision of their path from day one.



# STUDENT SUCCESS REPORT

Spring 2015

# EFFECTS OF DEVELOPMENTAL EDUCATION REFORM

Florida Senate Bill 1720, which impacted the Florida College System in 2014, gave more recent high school graduates (for example, those graduating with a regular Florida high school diploma since 2007) a choice of whether to participate in developmental education classes or move directly to college-level classes, without the requirement of a college placement test. At the close of the Fall 2014 term, the college experienced its first drop in overall college-wide success since Fall 2010, with .7% decrease over the previous fall. Despite an overall success rate that was essentially flat from Spring 2014 to Spring 2015, the results below show the profound impact the legislation has had on minority, First-Time-In-College students (FTIC), particularly male students.

**50%**

**SUCCESS RATE** of FTIC students who took classes that were not recommended by advising staff.

**5%**

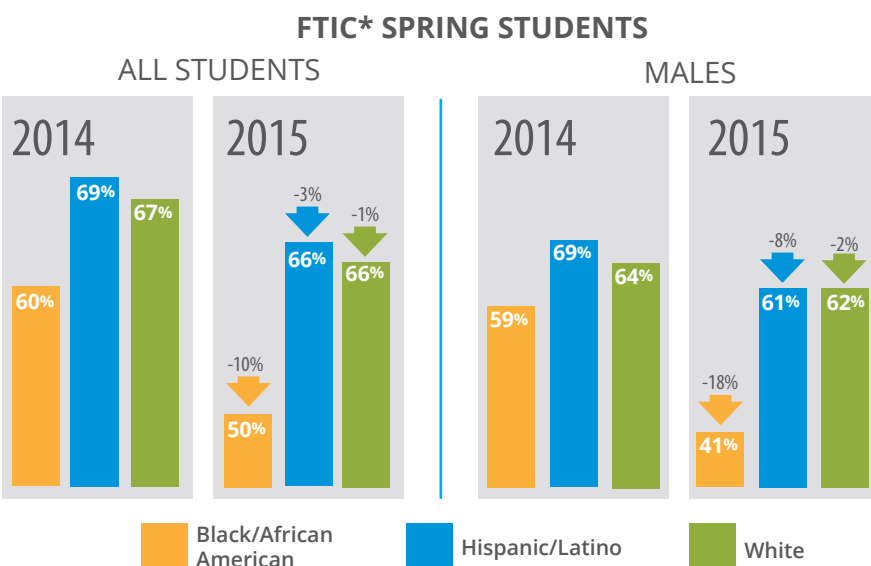
**DIFFERENCE**, among Hispanic/Latino male FTIC students, in success rates, between those who took courses that were recommended by college advising staff and those who did not.

**15%**

**DIFFERENCE**, among Black/African American FTIC students, in success rates, between those who took courses that were recommended by college advising staff and those who did not.

**COLLEGE-WIDE SUCCESS**  
Success is defined as earning an A, B or C grade in class.

**0.6%**



\*First-Time-In-College

# ABOUT THE COLLEGE EXPERIENCE

Since Fall 2012, faculty, administrators and staff at St. Petersburg College have focused on ways to prepare our students for success. "The College Experience: Student Success" now permeates every facet of the college as we strive to give our students the support they need to earn the degree or certificate that will change their lives.

Our current student support initiatives, listed below, help illustrate how the College Experience is positively impacting our students. Beginning with the 2015-16 school year, we are launching two new support mechanisms. Our new Smart Start Orientation, required of all FTIC students, will get students off to a strong start by giving them the knowledge base they need to be successful at SPC. We are also unveiling our Academic Pathways program, which will give students a clearly defined road map to graduation.

## STUDENT SUPPORT INITIATIVES

### New Student Orientation

FTIC students who attended new student orientation were more successful in their courses and less likely to withdraw.

**5%** higher success rate

**3%** less likely to withdraw



### My Learning Plan

FTIC students with a My Learning Plan had higher success rates and were less likely to withdraw.



**20%** higher success rate

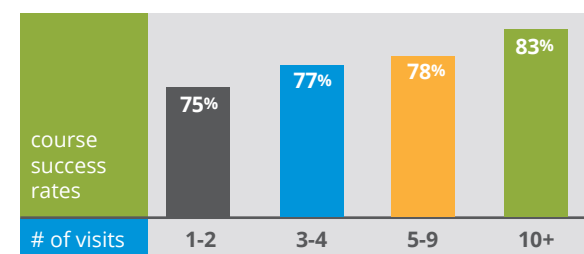
**8%**

lower withdrawal rate



### Out-of-Class Support

The more often students visited the learning centers, the more successful they were in their courses.



### Integrated Career and Academic Advising

FTIC students who have identified a career are 10% more successful\* in their classes than students who have not.

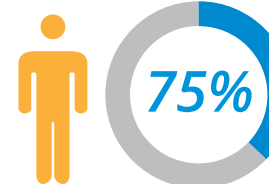


**10%**

\*Success is defined as earning a grade of A, B or C in a class

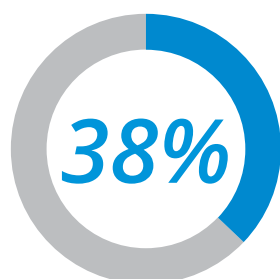
### Early Alert / Student Coaching

More than 75% of students receiving early alerts were assisted by a coach.



## DEVELOPMENTAL EDUCATION REFORM RESULTS

\*Success rates of students in 1000-1100 level courses who did not enroll in recommended developmental classes.



**MATH: MAT 1033**

\*Passed with a C or better



**READING: ENC 1101**



**WRITING: ENC 1101**

All data current as of 7/15/15