

# St. Petersburg College

## Midtown Expansion— *Update*

**Board of Trustees Presentation**

November 2014

Dr. Kevin Gordon  
Tyrone Clinton



## Purpose:



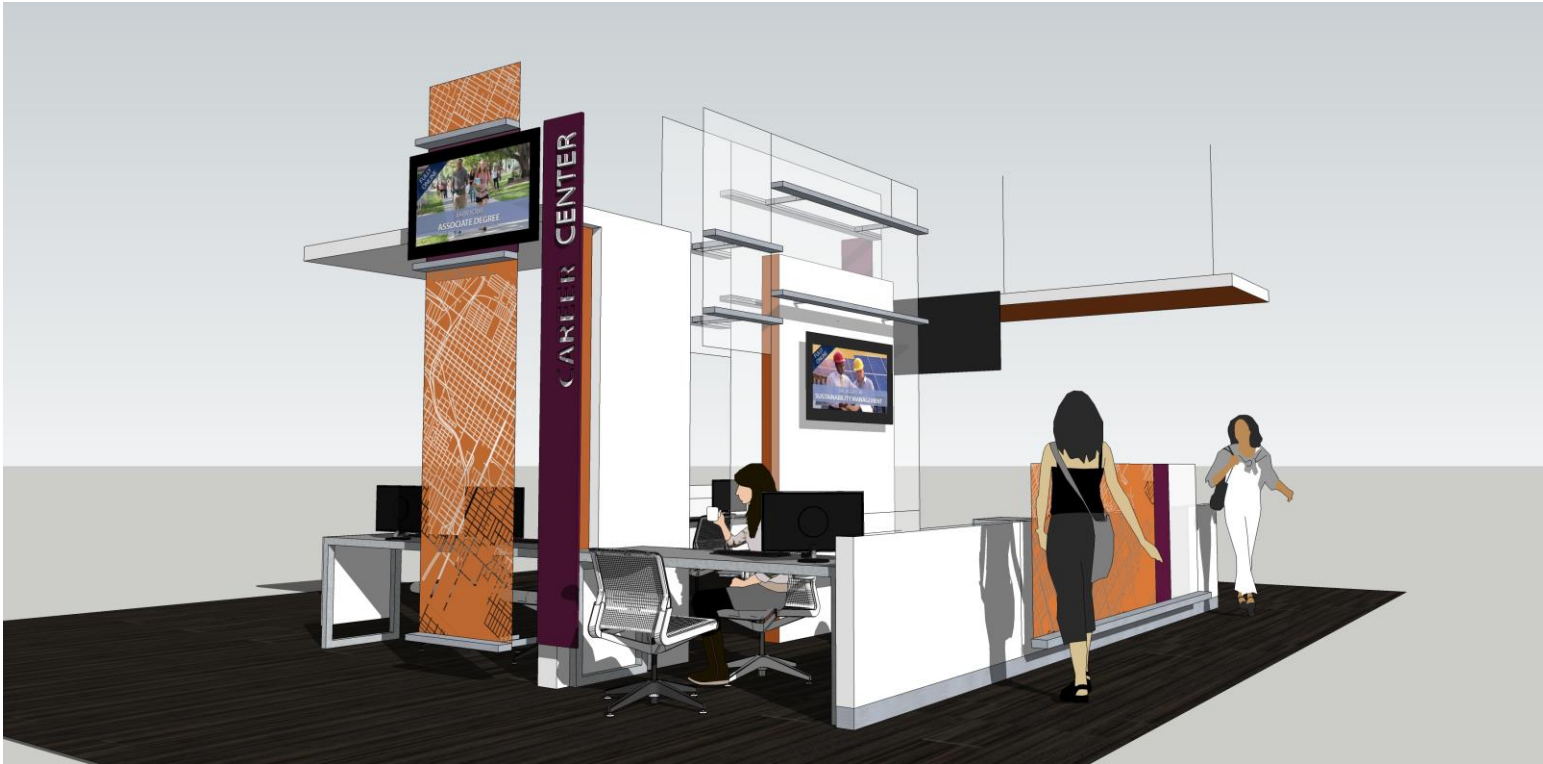
- To be a central force for education in the historically underserved Midtown and South St. Petersburg community.
- To support the revitalization of the Midtown Corridor by providing ***workforce development, certificate and AS*** programs and services in partnership with other community based businesses and organizations.
- To provide academic programs and services that allow students to ***complete*** a degree, certificate or training that will put them to work.

# New Facility

- 3-story 45,000 sq. Ft. building
- Full service building
- Four times more space
- Two science labs
- Three computer labs
- Bookstore
- Community room
- Public access computers and small business services functions.

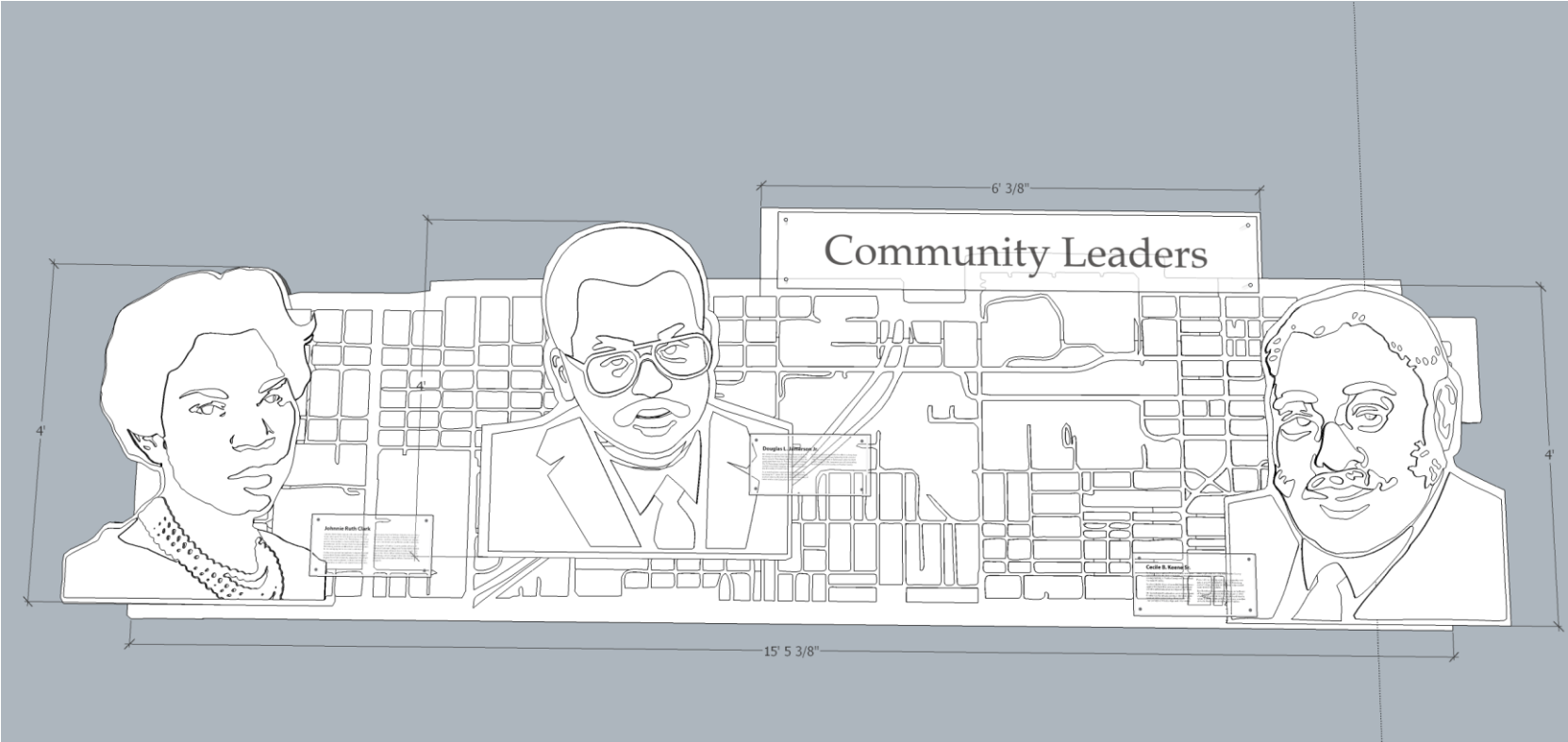


# Other highlights



# Proposed Career Center

# Other highlights cont.



# Proposed Artwork

# Staffing Needs

## Administration and Advising

Dr. Kevin Gordon  
Provost

Tyrone Clinton  
Associate Provost

James Johnson  
Student Support Advisor

Sherry Roberts  
Administrative Services Specialist

(Vacant)  
Student Support Advisor

(Vacant)  
Student Life & Leadership Coordinator

(Vacant)  
Student Support Advisor

Ginger Bligen  
Student Support Assistant

Chaye Mobley  
OPS-Student Support Advisor

Katy Simpson  
OPS-Student Support Assistant

(Vacant)  
Student Support Assistant

(Vacant)  
Technology Support Specialist

(Vacant)  
Disability Resources Specialist

## Career Services

(Vacant)  
Career Advisor

(Vacant)  
Career Specialist

(Vacant)  
Internship Coordinator

## Library Services

Instructional Support Specialist (Writing)

Information Resources Librarian

## Facility Services

Harold Nesbitt  
Senior Security Officer

Glenn Baker  
Custodian

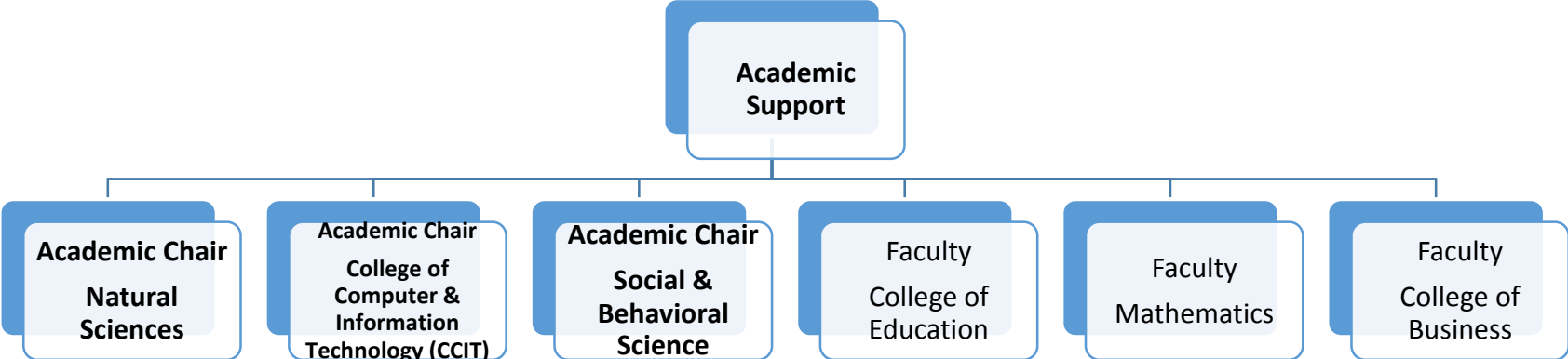
Jerry Mitchell  
(Contracted Security Officer)

## Financial Assistance Services

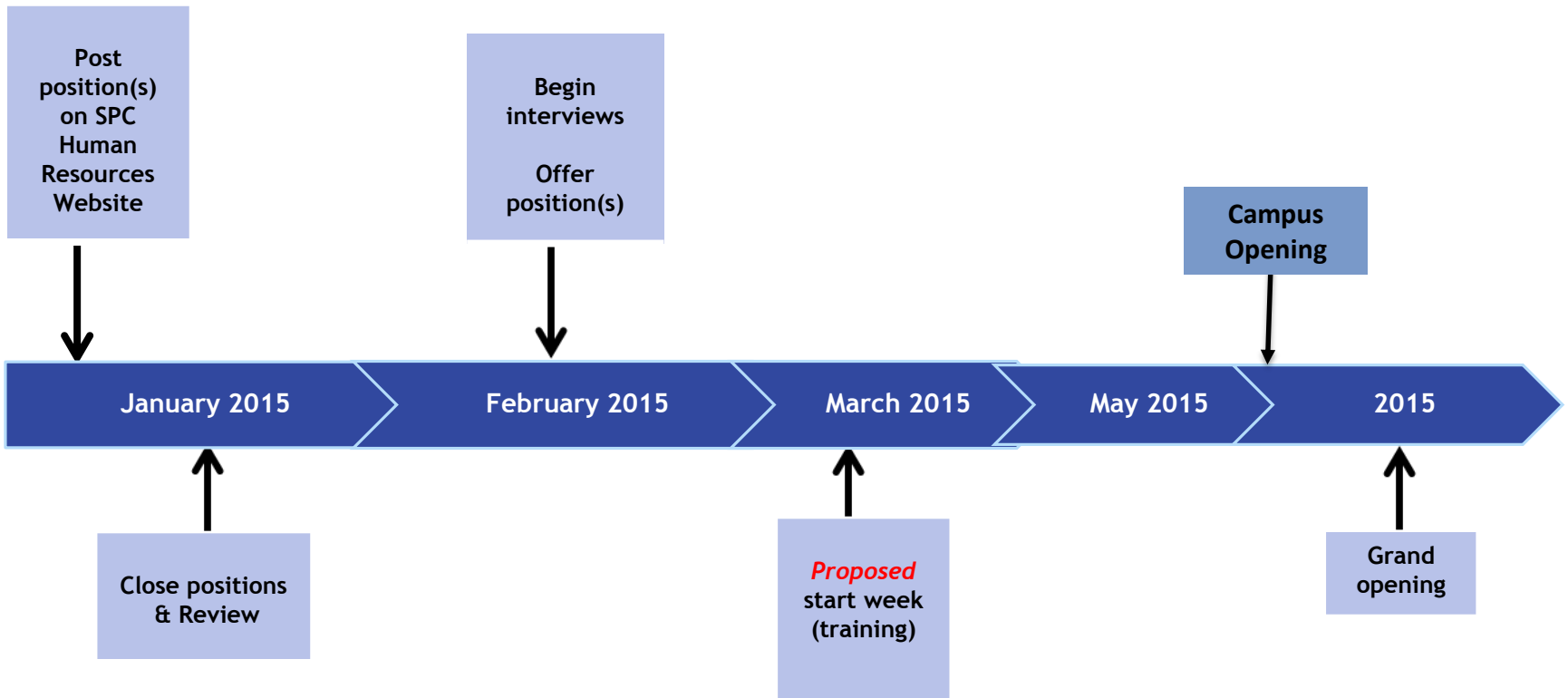
Roslynn Kearney

2014-15 positions to be filled

2015-16 Budget Request



# Staffing Timeline





# Academic Programs



## Phase I

- **Advanced Manufacturing** (Certificate)
- **Clinical Medical Assisting** (Certificate)
- **Early Childhood Education** (Certificate)
- **Emergency Medical Technician** (Certificate)
- **Entrepreneurship** (Certificate)
- **Computer Support CompTIAA+** (Certificate)
- **General AA**

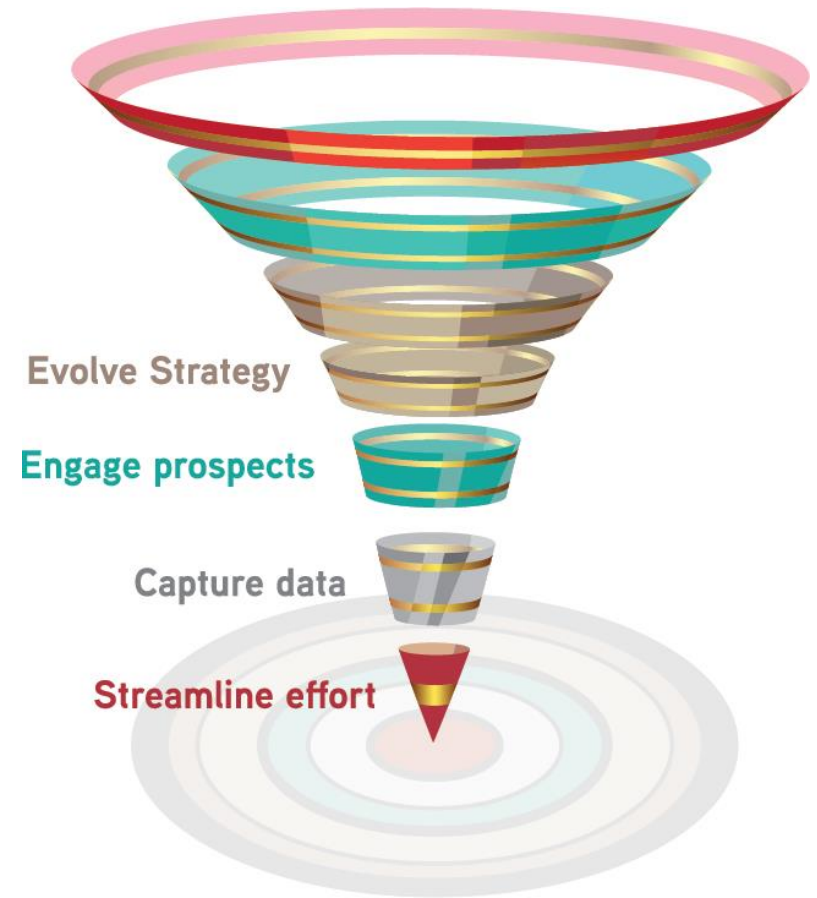
## Phase II

- **CCIT Certificates:**
  - Help Desk Support Technician
  - Information Technology Analysis
  - Information Technology Support Specialist
- **Human Services AS**
- **Business Administration AS**
- **Early Childhood BA**

# Enrollment Strategy

## Recruitment strategy:

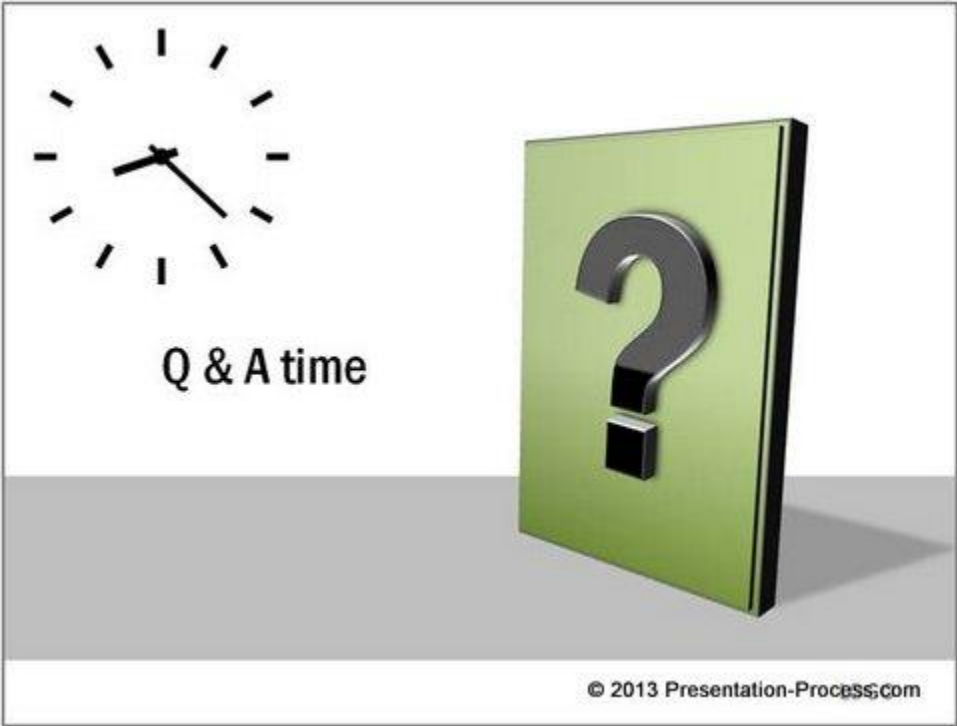
- Visit all area churches
- Visit 5 High schools (Gibbs, Boca Ciega, Lakewood, St. Pete, and Northeast)
- Host an information table at Deuces Live Sunday Market
- Phone outreach to applicants
- Door to Door community walks with hang tags





- Conduct Community Collaborative Lab-Dec. 2, 2014
- Develop a Transition timeline
- Create Marketing & Advertisement Plan for Community
- Develop a Communication Plan for Students
- Determine time for ribbon cutting

# Questions



# Academic Workforce Program Goals

*Board of Trustees Meeting  
November 18, 2014*

<b>Discipline</b>	<b>2013-14 Actual</b>	<b>2014-15 Target</b>	<b>Fall 2014 Actual</b>	<b>Spring 2015*</b>
College of Business	104	460	181	188
College of Education	532	670	291	357
College of Public Safety	25	280	70	146
Communications	21	13	11	2
Computer and Information Technology	119	138	63	80
Engineering Technology and Building Arts	21	30	4	23
Humanities and Fine Arts	83	98	29	51
Natural Sciences	12	44	7	20
Non-Clinical Health	148	149	78	38
Public Policy and Legal Studies	85	125	36	34
Social Sciences	39	82	21	54
Human Services	63	65	11	21
<b>Grand Total</b>	<b>1252</b>	<b>2154</b>	<b>802</b>	<b>1014</b>

\*Projected

# Internships & Work-Based Learning Courses

60 hours = 1 credit

- Internship / Cooperative Education Work Experience
- Service Learning
- Entrepreneurial Experiences
- Mentorship
- Simulated Enterprise
- Job Shadowing
- Business/Industry Visits
- Promote Career-Readiness
  - ✓ Apply content knowledge in real-world environments
  - ✓ Establish relationships and build a professional network
  - ✓ Demonstrate critical thinking, professionalism and ethical decision-making

# Work-Based Learning

## College of Business

### *Supply Chain*

- Council of Supply Chain Management Professionals
- Amazon
- Port of Tampa Bay
- Hillsborough County Aviation Authority
- City of Tampa
- Great Bay Distributors
- Tampa Bay Times
- GE Instrument Transformers

### *Hospitality*

- USF – Manatee
- Collegiate Chapter of Hospitality, Sales, and Marketing Association International

## Music Industry Recording Arts

- Music Tampa Bay radio station
- Society of Broadcast Engineers
- Pinellas County Schools
- Operation Co-exist
- Lake Audio

## Sign Language Interpretation Program

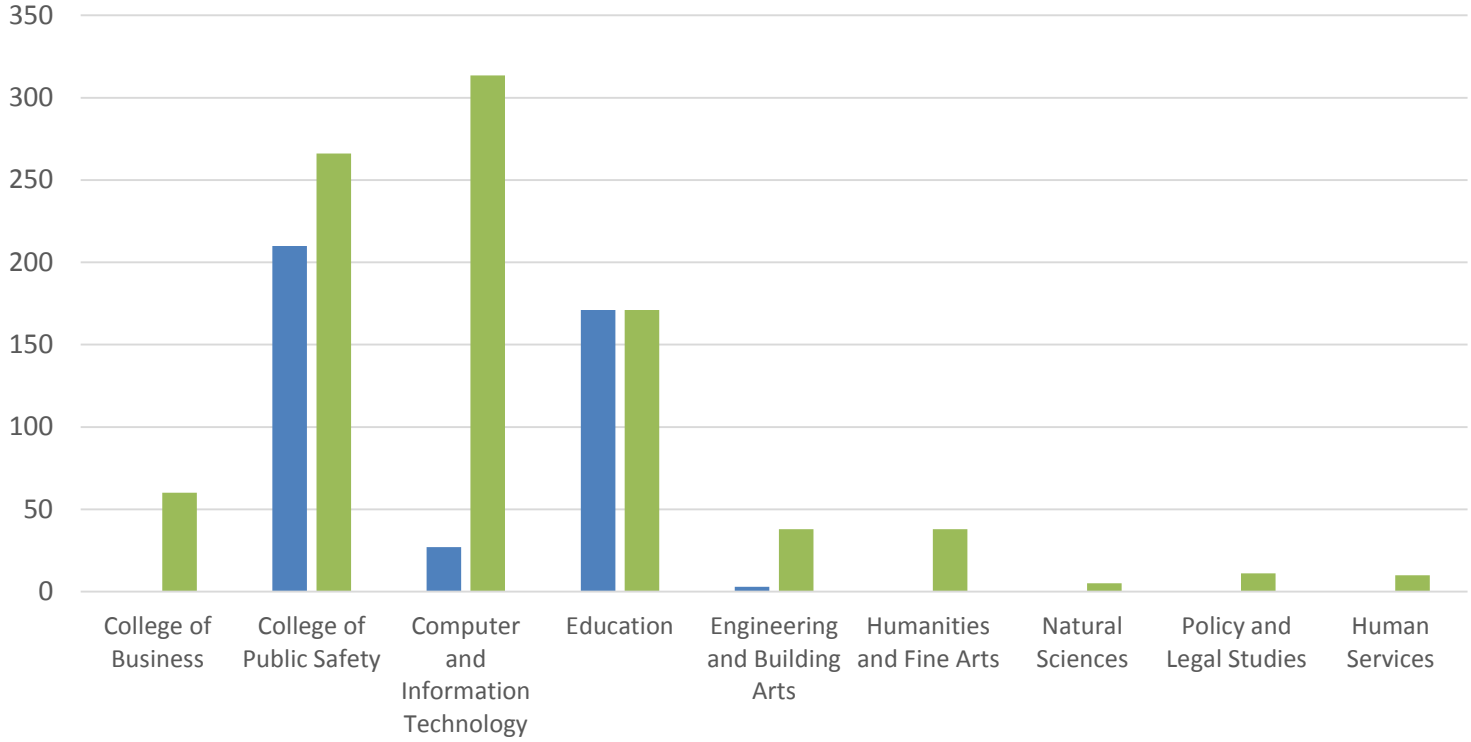
- Hillsborough County School Board
- Vocational Rehabilitation
- KSS Sign Language Agency

## Policy & Legal Studies

- Clearwater Marine Aquarium



# New Partnerships



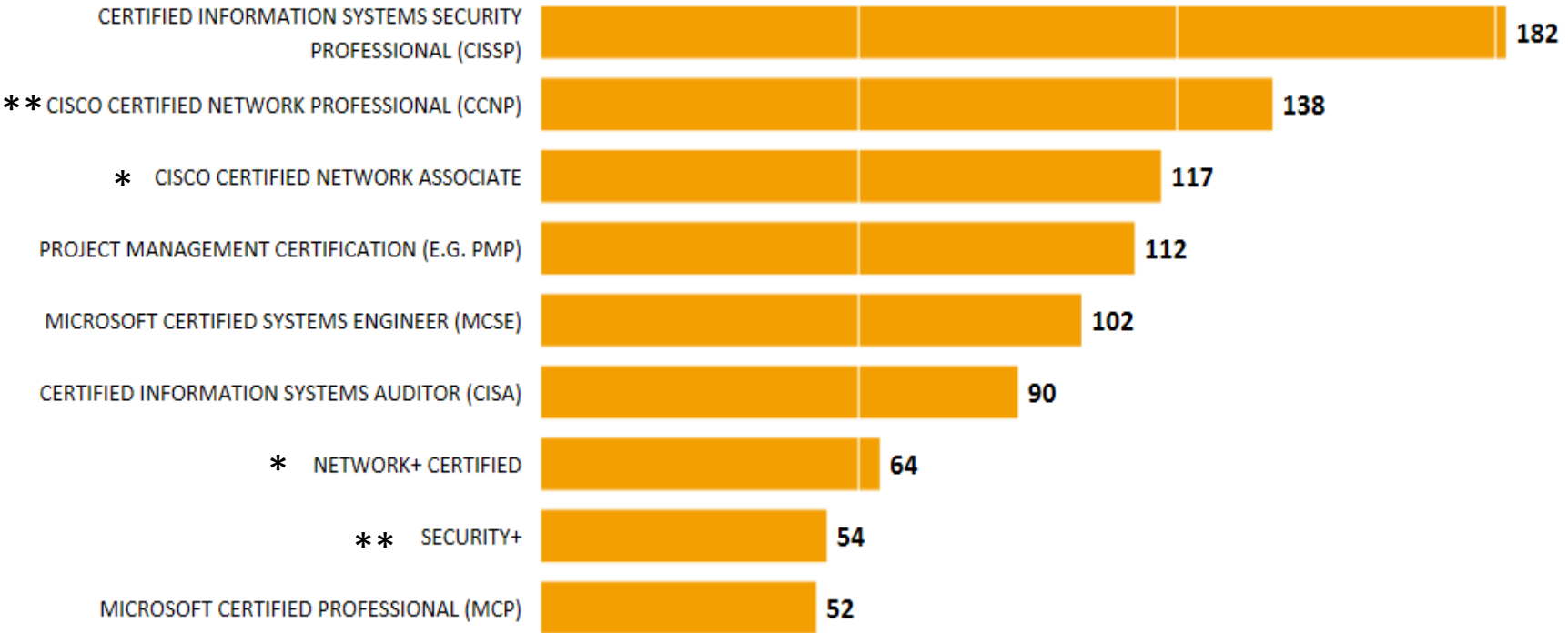


2013-14  
Total:  
411

2014-15  
Goal:  
913

2013-14 Actual   
2014-2015 Goal 

# Industry Certifications Attained

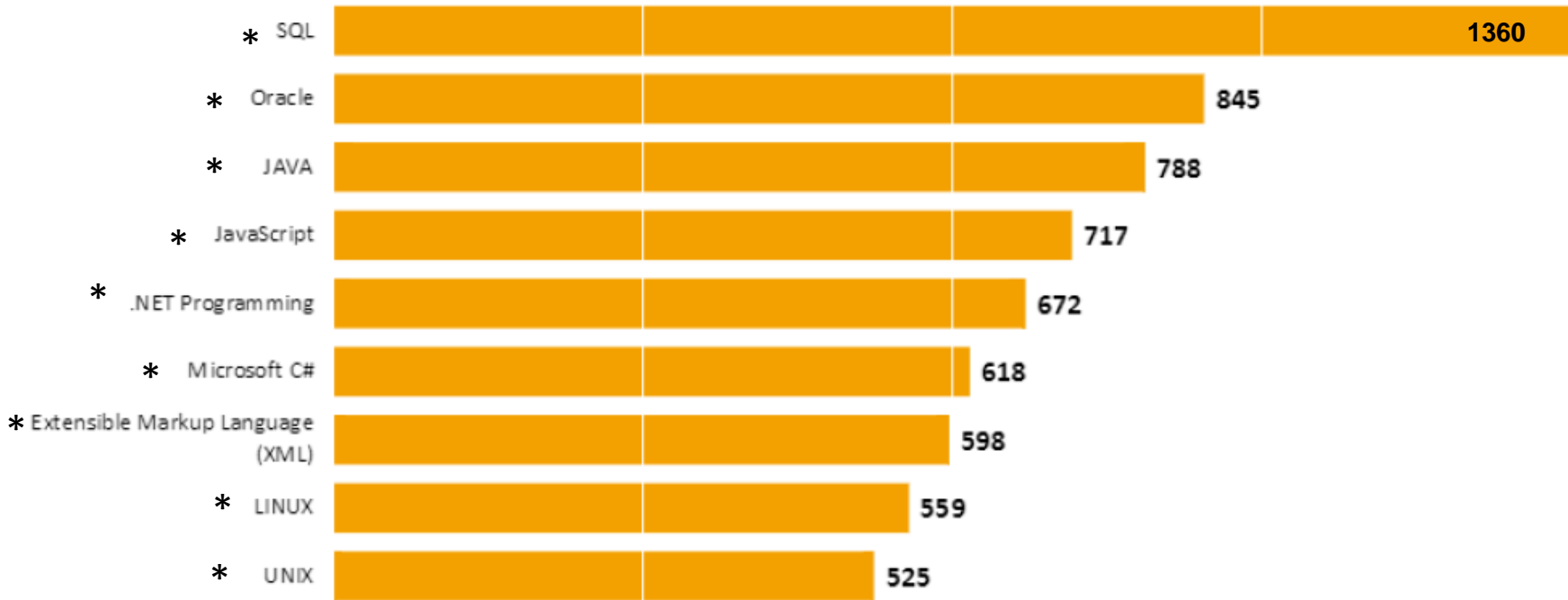


Certification Exams Embedded into courses:

\*2013-14

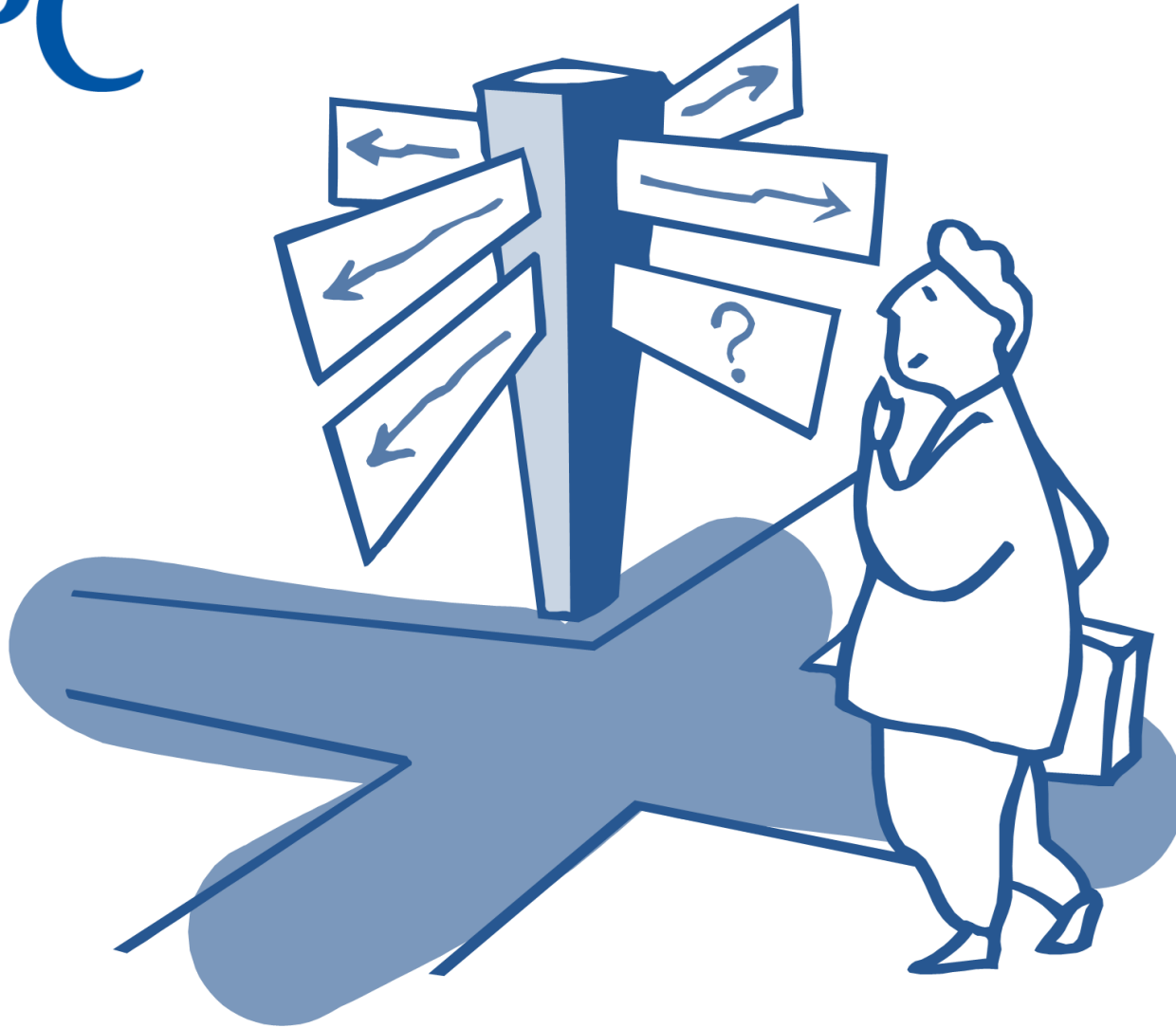
\*\*2014-15

## Burning Glass IT Job Postings and Required Industry Certifications



\*Skills embedded in courses

# Burning Glass IT Job Postings and Listed Skills



# Questions?



# Overview of Economic Innovation and Leadership Symposium

- St. Petersburg College's, Institute for Strategic Policy Solutions hosted The Economic Innovation and Leadership Symposium at the Seminole Campus.
- The Symposium is a part of Pinellas County Economic Development's Pinellas by Design.
- Pinellas by Design was established in 2005.
  - The purpose was for redevelopment and to foster business development thus increasing 50k jobs.

# Overview of Economic Innovation and Leadership Symposium, cont.

## The Over Overarching Theme of this Symposium:

- Primary Industries and focus on high paying jobs
- Collaboration Between Business/Industry, Government, and Education

# Primary Industries in Pinellas County/Region 14

Industry Certifications Offered	FY'14	FY'15	FY'16
Manufacturing	4	8	18
Information Technology	39	52	83
Business and Finance	3	10	22
Healthcare	3	7	23
Supply Chain Management	-	8	8
Other**	-	-	38
<b>Total</b>	<b>49</b>	<b>85</b>	<b>213*</b>

*\* Areas of growth, 213 total certificates in Region 14 that are 12 months or less. This is an additional 128 potential industry certificate offerings.*

*\*\* This category includes Construction, Hospitality, Maintenance, etc.*

# SPC Collaboration with Pinellas County Economic Development

- Prospect Visits
  - Bristol Myers Squibb
- Quick Response Training Grants (QRT)

Company Name	Jobs	Dollars
Tech Data	100	\$486,429.00
Jabil	85	\$102,829.00
Power Design	150	\$276,562.00
Instrument Transformers-GE Energy MFG/Digital Energy	143	TBD
<b>Totals</b>	<b>478</b>	<b>\$865,820.00</b>



# SPC Collaboration with CareerSource Pinellas

## Hi-Tech Training Grant/USDOL

### **Unemployed Participants:**

- Attending – 200
- Completing – 128
- Gaining Employment – 88

### **Participant Demographics:**

- 48% have some college
- 30% have Bachelor Degrees
- 13% are Veterans
- 9% Disabled

## Manufacturing

- Industry Certification Training Centers (ICTC) German Manufacturing
- Oldsmar Training Center

## Information Technology

- Tech Data
- Tampa Bay Technology Forum

## Business and Finance

- Internal Revenue Service
- Raymond James

## Healthcare

- Pinellas County Medical Association
- Pinellas Osteopathic Medical Society



# Conclusion of the Economic Innovation and Leadership Symposium

- Commissioner Seel
  - Based on the surveys submitted, this needs to be an annual event.

