

Student Handbook

Barry University

**Case Western Reserve
University**

**Cleveland State
University**

Daytona State College

**Embry-Riddle
Aeronautical University**

**Florida Gulf Coast
University**

**Florida Institute of
Technology**

**Florida International
University**

Florida State University

**National University of
Health Sciences**

Saint Leo University

University of Florida

**University of South
Florida**

**University of South
Florida St. Petersburg**

**University of South
Florida Sarasota/Manatee**



St. Petersburg College HISTORY

Access and excellence are the hallmarks of St. Petersburg College (SPC), which was founded as St. Petersburg Junior College (SPJC) in 1927, as Florida's first two-year institution of higher education. Initially a private facility, its first classes met in a borrowed unused section of the new St. Petersburg High School, with 102 enrolled students who were taught by 14 faculty members - the first class of 48 graduated in 1929.

In 2001, SPJC became the first two-year Florida community college to make the transition into a four-year institution – and became SPC.

Today St. Petersburg College stands as a multi-campus, two-year/four-year public institution with 10 learning sites in St. Petersburg, Clearwater, Tarpon Springs, Pinellas Park, Largo and Seminole, and services that are administered throughout Florida, the nation and beyond

The University Partnership Center (UPC), located at the SPC Seminole Campus, opened in 1999, with six Florida institutions as partners. Though today, students can choose from over 100 bachelor and graduate degree programs offered by a variety of well-respected and accredited colleges and universities that are located both in and outside the state of Florida - without leaving Pinellas County!

Over the years, SPC has invested its resources to meet, and in many ways surpass the needs of students admitted each year, and is always planning for the ever-growing expectations of students who will be entering its doors in the future.

Student HANDBOOK

University Partnership Center

The information contained herein is intended for the use of students who are attending classes on any campus of St. Petersburg College (SPC) through the University Partnership Center (UPC). It is requested that students adhere to the policies and procedures prescribed within this handbook, and follow outlined protocols for emergencies, technical support and the conduct of classes while utilizing SPC-UPC facilities.

SPC History	2
Contact Information	
UPC Staff	4
SPC Security Dispatch – All Sites	4, 5
SPC Mailing Address & Information Line	4
SPC Campus/Security	4
SPC Campus Libraries	4
UPC Resources and Facilities	
UPC Photo ID Badge	6
WiFi Access	6
NUHS Clinic	6
Dental Hygiene	6
Wellness Centers	6
Library Support	7
Technology and Procedures	
Technology Use rule	8
Emergency Actions	
Acts of Violence	9
Emergencies	9
Medical Emergencies	4,9
Hurricane Information	9
SPC Emergency Alert Notifications/Tests	10
Forms	
UPC Student Photo ID Application	11
Release of Liability, Assumption of Risk & Indemnity	12
Release of Liability: Use of Wellness Center form	13
SPC Campus Locations/Maps	
SPC County map	14
SPC Allstate Center	15
Caruth Health Education Center	16
Clearwater Campus	17
SPC Downtown	18
EpiCenter	19, 20 and 21
SPC Midtown	22-23
St. Petersburg/Gibbs Campus	24
Seminole Campus	25
Tarpon Springs Campus	26
SPC Veterinary Technology Center	27
UPC Degree Options	28

University Partnership Center

POINTS OF CONTACT

University Partnership Staff

Catherine Kennedy, Associate Vice President
University Partnership Center
kennedy.catherine@spcollege.edu
(727)394-6202

Niki Johnson-McNealy, Administrative Services Specialist
University Partnership Center
johnson.niki@spcollege.edu
(727)394-6200

***Maria Greene**, Administrative Services Specialist
University Partnership Center
greenemaria@spcollege.edu
(727)394-6206

Campus Security

Security officers are on duty at SPC campus sites daily when classes and events are meeting and during the campus library hours of operation.

If you need to speak with an officer regarding an accident or injury, a theft or disturbance on an SPC campus, or if you need an escort to your vehicle, you have a dead car battery or locked your keys in your car, call Security Dispatch at 727-791-2560 and an officer will arrive promptly to assist you.

SPC Security Dispatch – All Sites
(727) 791-2560

Medical emergency: 911

When the 911 call is completed, please notify Campus Security (727) 791-2560 of the medical emergency and what action is being taken by emergency personnel.

SPC Information

St. Petersburg College
Post Office Box 13489
St. Petersburg FL 33733
(727) 341-4SPC (4772)

SPC Libraries

SPC Allstate Center..... (727) 341-4486
Clearwater Campus..... (727) 791-2415
Caruth Health Education Center..... (727) 341-3657
Seminole Campus (727) 394-6136
St. Petersburg/Gibbs Campus..... (727) 341-7199
Tarpon Springs Campus (727) 712-5728

University Partnership Center

CAMPUS CONTACTS

SPC Security Dispatch – All Sites (727) 791-2560

SPC Allstate Center – AC
3200 23rd St. S
St. Petersburg, FL 33711
Provost's office: (727) 341-4495
Security: (727) 341-4436

SPC Midtown – MT
1300 22nd St. S
St. Petersburg, FL 33710
Provost's office: (727)341-7163
Security: (727) 398-8267

Clearwater Campus – CL
2465 Drew Street
Clearwater, FL 33765
Provost's office: (727) 791-2475
Security: (727)791-2481

Seminole Campus – SE
9200 113th St. N
Seminole, FL 33772
Provost's office: (727) 394-6111
Security: (727) 394-6248

Caruth Health Education Center - HEC
7200 66th St. N
Pinellas Park, FL 33781
Provost's office: (727) 341-3666
Security: (727) 341-3654

St. Petersburg/Gibbs Campus – SPG
6605 Fifth Ave. N
St. Petersburg, FL 33710
Provost's office: (727) 341-4656
Security: (727) 341-4657

SPC Downtown – DT
244 2nd Ave. N
St. Petersburg, FL 333701
Provost's office: (727) 341-8062
Security: (727) 341-4262

Tarpon Springs Campus – TS
600 Klosterman Rd
Tarpon Springs, FL 34689
Provost's office: (727) 712-5742
Security: (727) 712-5790

EpiCenter – EP
13805 58th St. N
Largo, FL 33760
(727) 341-3054
Security: (727) 341-3051

SPC Veterinary Technology Center - VT
12376 Ulmerton Rd
Largo, FL 33774
Dean's Office: (727) 302-6721
Security: (727) 791-2560

University Partnership Center

RESOURCES & FACILITIES

UPC Photo ID Badge

In order to use SPC campus facilities and amenities, and to help ensure campus safety, all UPC students are required to wear a valid UPC photo ID badge at all times when on an SPC campus.

After completing the UPC Photo ID Application form, which is provided here, it must be submitted to the UPC staff and they will issue an ID# and password to activate your Wi-Fi account.

There are many benefits associated with having the UPC ID badge, such as the use of facilities such as computer labs, study areas, proctoring services, and libraries at all SPC Campuses, free PSTA bus rides, and discounts. For a complete list of benefits contact the UPC staff.

If a UPC ID badge is lost/stolen, it must be reported to UPC staff immediately.

Wi-Fi Access

When the UPC Student Access Request Form is submitted to the UPC staff, an account is created and a log-in/ID# and password is issued, which can be used to log on SPC computers and the SPC Wi-Fi.

NUHS Whole Health Center at SPC

National University of Health Sciences' Whole Health Center, located in room OP101 at the SPC Caruth Health Education Center, provides patient-centered care that combines the best of natural healing with a drug-free and surgery-free approach. Treatment at the Whole Health Center is provided free of charge to SPC/UPC faculty, staff, and students. The only expenses you'll incur will be to cover the cost of lab tests, x-rays, and therapeutic supplies or supplements. When you visit, you'll be seen by a chiropractic clinician and intern trained in primary care medicine. After careful evaluation they will choose the best combination of treatment options for your unique health care needs.

Services include: Chiropractic Care, Diagnostic Imaging, On-Site Laboratory Services, Work/School Physicals, Therapeutic Exercise Programming, Physical Rehabilitation, Myofascial Release Therapy, Nutritional Counseling, Custom Orthotics.

To schedule an appointment, please call: (727) 341-3760

Dental Hygiene

The Dental Hygiene Clinic, located in room HE121D at the SPC Caruth Health Education Center, offers preventive dental services (including teeth cleaning) under professional supervision. A fee of \$22 helps defray the cost of materials (X-rays are an additional \$10). The clinic is open to SPC students as well as the community. The clinic is closed from mid-July until the end of August. Daytime appointments can be scheduled by calling: 727-341-3668.

SPC Campus Wellness Centers

The SPC Wellness Centers are workout facilities that are equipped with a variety of strength, resistance and cardiovascular training equipment such as Nautilus machines, elliptical trainers, Stairmasters, climbers, cycling, rowing machines, treadmills, free weights, outdoor tracks, and much more. The Wellness Centers are free and open to students when they're not in use by a physical education class.

The hours of operation vary and are posted at each Wellness Center. Students must present a valid UPC photo ID badge, bring a towel and proper attire must be worn – shirts with sleeves, sweat pants or shorts, and sneakers. Students are also asked to sign a Release of Liability, Assumption of Risk & Indemnity form, which is included here.

The Wellness Centers are located at the following SPC campuses: Allstate Center, Clearwater, St. Petersburg/Gibbs, and Tarpon Springs.

UPC RESOURCES & FACILITIES, continued

Library Support

With a valid UPC photo ID badge, UPC students are welcome to visit any of the eight SPC campus libraries to check out materials, request assistance from librarians with research or locating materials through the online library. Materials are available for check out and the following services are available:

- Print and electronic books, academic journals, magazine and newspapers,
- Streaming videos, audiobooks, images, citation tools and music,
- Thousands of online research databases,
- Current and back issues of periodicals,
- Electronic indexes, databases and audiovisual materials,
- Group and individual study areas,
- Computer labs and laptops for check-out (in-library use),
- Black and white or color printing and image scanners,
- Access to the collections of all 28 Florida College libraries.

Library Online is at <http://go.spcollege.edu/libraries/>

University Partnership Center Technology & Procedures

Rule for Technology Use

Intent

The Board of Trustees shall allow and restrict use of information technology as outlined in the following sections labeled Acceptable Use and Prohibited Use. In cases requiring authorization or approval as stated in the following, such approval will come from the cabinet member in charge of the area and the vice president for Information Technology (or appointed designees).

Acceptable Use

- A. Information technology use that supports and enables the effective and efficient completion of job description duties and assigned tasks is acceptable.
- B. Information technology use by faculty (and students under the direction of faculty) that contributes to scholarly research and academic work within the boundaries of the approved curriculum is acceptable.
- C. Occasional and infrequent personal use that does not interfere with job duties, supersede work responsibilities, or add additional costs to the college is acceptable. The cost to employee per page for printing shall be the same as the cost per page for a photo copy as set forth in Board of Trustees' Rule s6Hx23-5.17.

Prohibited Use

- A. Use of college information technology to break any international, federal, state or local law (or to aid in any crime) is prohibited.
- B. Use of college information technology for the creation, storage, display or transmission of profit-oriented, commercial, political or business purposes is prohibited.

- C. Consistent with the college's sexual harassment policy, creating, viewing, storing, transmitting or publicly displaying pornographic (as defined by the U.S. Supreme Court), obscene, defaming, slanderous, harassing, or offensive data (including sound, video, text and graphics data) is prohibited.
- D. Circumventing established college software security procedures or obtaining information system access and passwords to which one is not entitled is prohibited.
- E. Unauthorized alteration or removal of college hardware security systems is prohibited.
- F. Unauthorized modifications to college hardware or software are prohibited.
- G. Unauthorized access, alteration or destruction of another employee's data, programs, or electronic mail is prohibited.
- H. Connecting or installing personal or non-college-owned information technology hardware or software to the college network without prior approval is prohibited. Installing non college-owned software without prior approval and documented proof of legal licensure is prohibited.

Inspection

The board reserves the right to review and inspect all data and materials on any computer furnished by the college to any student or employee.

Consequences of Unacceptable Use

- A. Unacceptable use may result in the revocation of access to college information technology.
- B. Employees and students who violate this rule shall be subject to discipline from reprimand to dismissal. The following disciplinary procedures shall apply:
- C. Remedial or disciplinary action will depend upon the nature of the incident(s).

University Partnership Center Emergency Actions

Emergency Actions

Acts of Violence

An act of violence can include a hostile confrontation, person with a weapon, shooter or a similar type of threat on a college site. The first response should be to call SPC Security Dispatch at (727) 791-2560.

See below for other information.

- Do not try to engage or separate combatants.
- Warn others about the emergency.
- Evacuate to a safe area away from the danger and take protective cover.
- Stay away from windows and doors until otherwise notified.
- Wait for local police or security to assist you out of the building or area.

If it will not endanger you or others near you, call 911 and give the operator the following information:

- Type of emergency.
- Your location – campus, building, room number.
- Location of emergency.
- Your name and title.
- Telephone number you are calling from.

Do not hang up until the 911 operator obtains all the necessary information.

After calling 911, call SPC Security Dispatch at (727) 791-2560.

Emergencies

Report all suspicious incidents and medical emergencies to SPC Security Dispatch at (727) 791-2560.

When faced with a fire, medical emergency, explosion, hazardous-materials spill or an act of violence:

- Warn others about the emergency and evacuate the area if possible.
- Seek protective cover if necessary

Call 911 and give the operator the following information:

- Type of emergency.
- Your location – campus, building, room number.

- Location of emergency.
- Your name and title.
- Telephone number you are calling from.

Do not hang up until the 911 operator obtains all the necessary information.

After calling 911, call SPC Security Dispatch at (727) 791-2560.

Hurricane

Hurricane season begins June 1st and continues through November 30th. During this time, SPC officials monitor the Pinellas County Emergency Management bulletins and official weather forecasts when SPC falls within the National Hurricane Center's zone of landfall probability. By doing so, SPC will have time to activate the college's Emergency Management Plan, alert campus personnel and send emergency notifications. Information related to the college closing will be sent through the SPC Emergency Notification System, posted on the SPC web-site: www.spcollege.edu, announced on SPC TV and local TV and radio stations, as well as on social media outlets, as soon as possible once the decision has been made to close the college.

Once the storm, or threat of a storm, has passed, information as to re-opening SPC campuses and programs will be conveyed in the same manner as the college closings were reported prior to the storm.

By visiting the SPC Emergency Preparedness web-site; <https://spcemergency.wordpress.com/>, you will find information that can help you and your family be prepared for a weather emergency. These are a few items found there:

- Links to the emergency preparedness & management procedures for SPC and local, state and federal government,
- Instructions for installing the "Hurricane Web Application" on your mobile phone,
- Information about preparing a personal hurricane plan,
- Links to various Hurricane guides

Emergency Actions, continued

SPC Emergency Notification System – “SPC Alert”

The SPC Emergency Notification System will send messages to SPC desktop computers, audio speakers, emails, and phones. SMS text messages are sent to cell phone numbers of UPC partners' faculty, students and staff that are in the UPC database if there is an emergency.

When an UPC account is activated (please see UPC ID Badges), the cell phone number provided for emergency notifications can be registered (opt-in) to receive emergency notifications by **texting 'yes' to 68453**.

A TEST message for the Emergency Notification System is sent periodically. The UPC is notified of the date and time the TEST message will be sent and we send an email to our partners' representatives letting them know.

If you have registered your cell phone number but do not receive a TEST message when it's gone out, please verify with the UPC staff that we have your correct cell phone number in the database and that it has been registered to receive messages sent by the Emergency Notification System.

UPC STUDENT PHOTO I.D. APPLICATION

PLEASE PRINT CLEARLY:

FIRST: _____ MI: _____ LAST: _____

ADDRESS: _____ CITY: _____ STATE: _____ ZIP: _____

Student ID#: _____ BIRTH DATE: _____ PHONE #: * _____

*Is this the phone number to which SPC has permission to send an on-campus emergency notification message? YES NO

If **NO**, please provide an emergency notification number: _____

SPC Graduate? YES* NO (please circle) Lower or Upper Division

*If **YES** – SPC ID#: _____

E-MAIL ADDRESS: _____

PROGRAM OF STUDY: _____

Check - UNIVERSITY PARTNER INSTITUTION

- | | |
|---|---|
| <input type="checkbox"/> BARRY | <input type="checkbox"/> CASE WESTERN |
| <input type="checkbox"/> CLEVELAND | <input type="checkbox"/> DAYTONA STATE |
| <input type="checkbox"/> EMBRY-RIDDLE | <input type="checkbox"/> FGCU |
| <input type="checkbox"/> FIT | <input type="checkbox"/> FIU-Online |
| <input type="checkbox"/> FSU | <input type="checkbox"/> NUHS |
| <input type="checkbox"/> SAINT LEO | <input type="checkbox"/> UF |
| <input type="checkbox"/> USF - Sarasota/Manatee | <input type="checkbox"/> USF - St. Petersburg |
| | <input type="checkbox"/> USF - Tampa |

PLEASE NOTE!

TO RECEIVE A UPC STUDENT ID CARD, YOU MUST PROVIDE THE FOLLOWING INFORMATION:

- ❖ UPC Login # (issued by UPC staff) and PHOTO PROOF OF IDENTITY AND RESIDENCE, SUCH AS A DRIVER'S LICENSE.
- ❖ PROOF OF CURRENT ENROLLMENT SUCH AS: CLASS SCHEDULE, REGISTRATION, RECEIPT OR VALID UNIVERSITY ID CARD SHOWING THAT YOU ARE A CURRENTLY-ENROLLED STUDENT WITH OUR PARTNER INSTITUTION.

I certify that I am the above named person and I am a student with a UPC Partner Institution. I also understand that the photo I.D. is the property of the University Partnership Center/St. Petersburg College. If, for any reason, I withdraw or leave the college, the photo I.D. will no longer be valid.

SIGNATURE: _____ DATE: _____

*** Any new updates - notify us as soon as possible**

RELEASE OF LIABILITY: USE OF WELLNESS CENTER
Waiver must be completed at the start of each term.

Student/Staff/Faculty ID#: _____

Telephone number: _____

Emergency contact: _____

Telephone number: _____

I, _____, of _____,
(Print full name) (Street) (City) (State) (ZIP Code)

In consideration of being granted permission to use the Wellness Center located at the _____ Campus/Center of St. Petersburg College, do hereby release and forever discharge the Board of Trustees of St. Petersburg College, its officers, employees, and agents of and from any and every claim, demand, action or right of action – of whatever kind or nature – either in law or equity arising from or by reason of or including any loss, damage or injury – including death – that I may suffer as a result of negligence of the Board of Trustees of the St. Petersburg College, its trustees, officers, employees or agents.

It is my desire to use the Wellness Center and the equipment located therein, and I am aware of the potential risk and hazards inherent in participation in the use of the Wellness Center and the equipment located therein. It is my intent to use the Wellness Center for physical fitness including an exercise program to improve cardiovascular function, muscle strength and flexibility. To the best of my knowledge, I am in good health and capable of undertaking this exercise program and in any event hold the St. Petersburg College harmless from any claim, action, loss or damages that may relate to my health. I further understand that the use of such exercise equipment includes potential risk which could result in loss or damages including injuries – including death – which may be sustained by me in using the equipment. Having voluntarily entered into this agreement and the use of said equipment knowingly, I hereby agree to assume the risk, loss, damage or injury – including death – that may be sustained by me as a result of using the Wellness Center or the equipment located therein.

I further agree to hold the Board of Trustees, the St. Petersburg College, its trustees, officers, employees and agents harmless from any and all liability claims, demands, actions whatsoever arising out of any loss, damage or injury – including death – caused or sustained by me as a result of coming on the premises of the St. Petersburg College and/or using the Wellness Center or any equipment at the college. This release of liability assumption of risk and indemnity shall be binding upon me, my distributees, beneficiaries, heirs, next of kin, personal representatives, executors, administrators and assigns.

I understand that my permission to use the Wellness Center and exercise equipment may be withdrawn by the college without reason upon written notice to me at the above address, or by posting said notice on the college's official bulletin board in the Wellness Center.

Important notice/informed consent: This release of liability, assumption of risk and indemnity agreement is a legally binding contract. If not completely understood by the undersigned, you should not sign it but should seek legal advice through an attorney.

The undersigned further acknowledges having read the foregoing release of liability agreement and fully understands it and further understands the risk of this exercise program and fully consents to the terms hereof.

Use of the Wellness Center requires:

- 1) _____ Current student/staff/faculty ID; employee's spouse must provide a driver's license or photo ID; other authorized user must provide driver's license or photo ID.
- 2) _____ Regular-sized towel.
- 3) _____ Appropriate warm-ups/shorts (no jeans).
- 4) _____ Sneakers/athletic footwear.

Participant's signature

Date

Parents or legal guardians of student/participant under 18 or incompetent must complete the following:

I, _____, of _____,
(Parent/Guardian) (Street) (City) (State) (ZIP Code)

the mother/father/guardian of _____, do hereby agree to all the provisions of the above Release on
(Student/Participant)
behalf of my son/daughter/ward.

Parent/Guardian's signature

Date

The Board of Trustees of St. Petersburg College affirms its equal opportunity policy in accordance with the provisions of the Florida Educational Equity Act and all other relevant state and federal laws, rules and regulations. The college will not discriminate on the basis of race, color, ethnicity, religion, sex, age, national origin, marital status, pregnancy, sexual orientation, gender identity, genetic information, or against any qualified individual with disabilities in its employment practices or in the admission and treatment of students. Recognizing that sexual harassment constitutes discrimination on the basis of sex and violates this Rule, the college will not tolerate such conduct.

LE 428 (06/16)

Should you experience such behavior, please contact Pamela Smith, the director of EA/EO/Title IX Coordinator at 727-341-3261; by mail at P.O. Box 13489, St. Petersburg, FL 33733-3489; or by email at eaao_director@spcollege.edu.

St. Petersburg College LOCATIONS

1. Tarpon Springs Campus
600 Klosterman Rd.
Tarpon Springs, FL 34689

2. Clearwater Campus
2465 Drew St.
Clearwater, FL 33765

3. EpiCenter
13805 58th St. N
Clearwater, FL 33760

Epi Services
Human Resources
14025 58th St. N
Clearwater, FL 33760

District Office
President's Office
Alumni Association
Foundation
6021 142nd Ave. N
Clearwater, FL 33760

4. Veterinary Technology Center
12376 Ulmerton Rd.
Largo, FL 33774

5. Seminole Campus
9200 113th St. N
Seminole, FL 33772

6. Caruth Health Education Center
7200 66th St. N
Pinellas Park, FL 33781

7. St. Petersburg/Gibbs Campus
6605 Fifth Ave. N
St. Petersburg, FL 33710

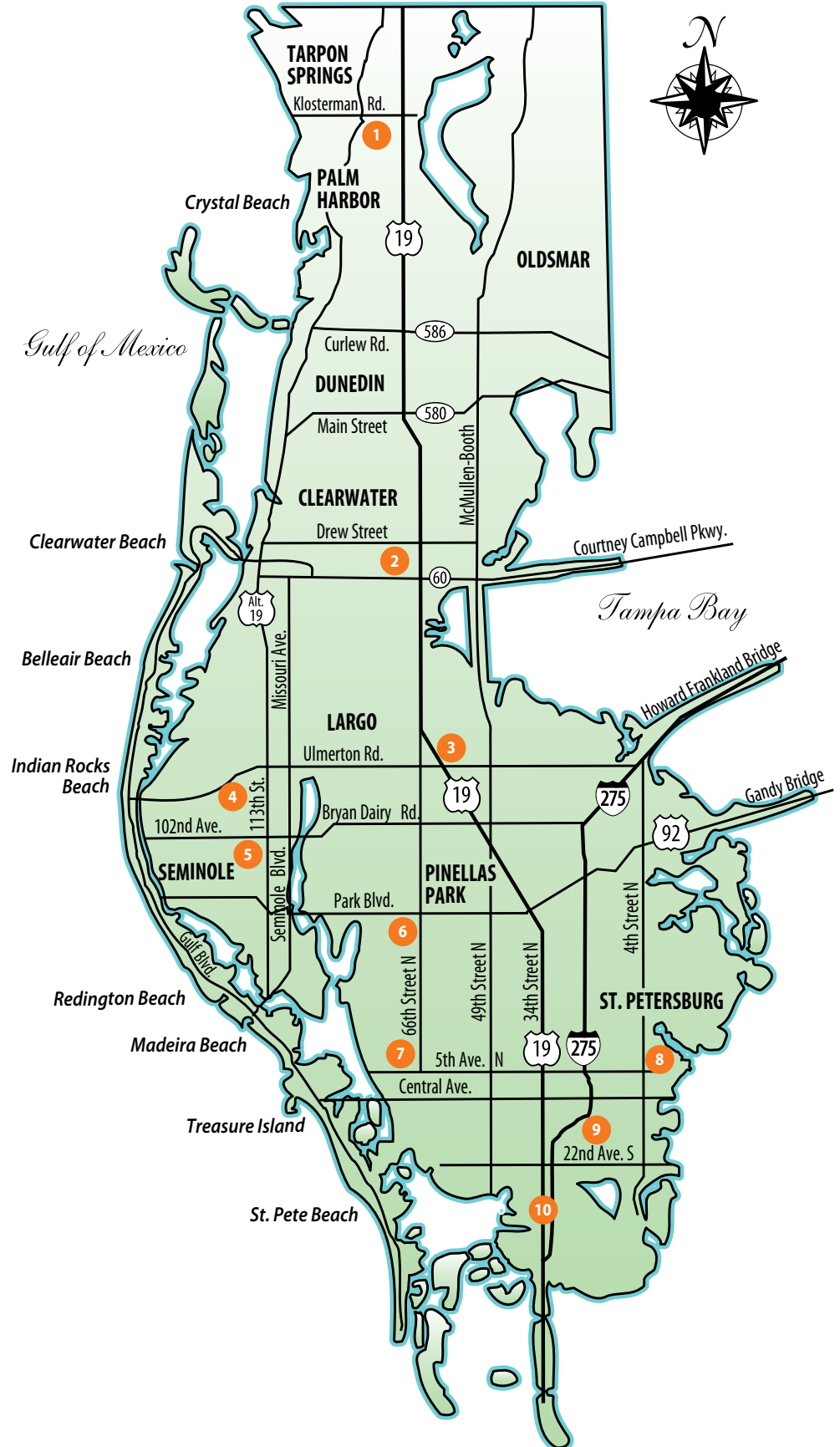
8. SPC Downtown
244 Second Ave. N
St. Petersburg, FL 33701

9. SPC Midtown

Douglas L. Jamerson, Jr.
Midtown Center (*Opened in 2015*)
1300 22nd St. S.
St. Petersburg, FL 33710

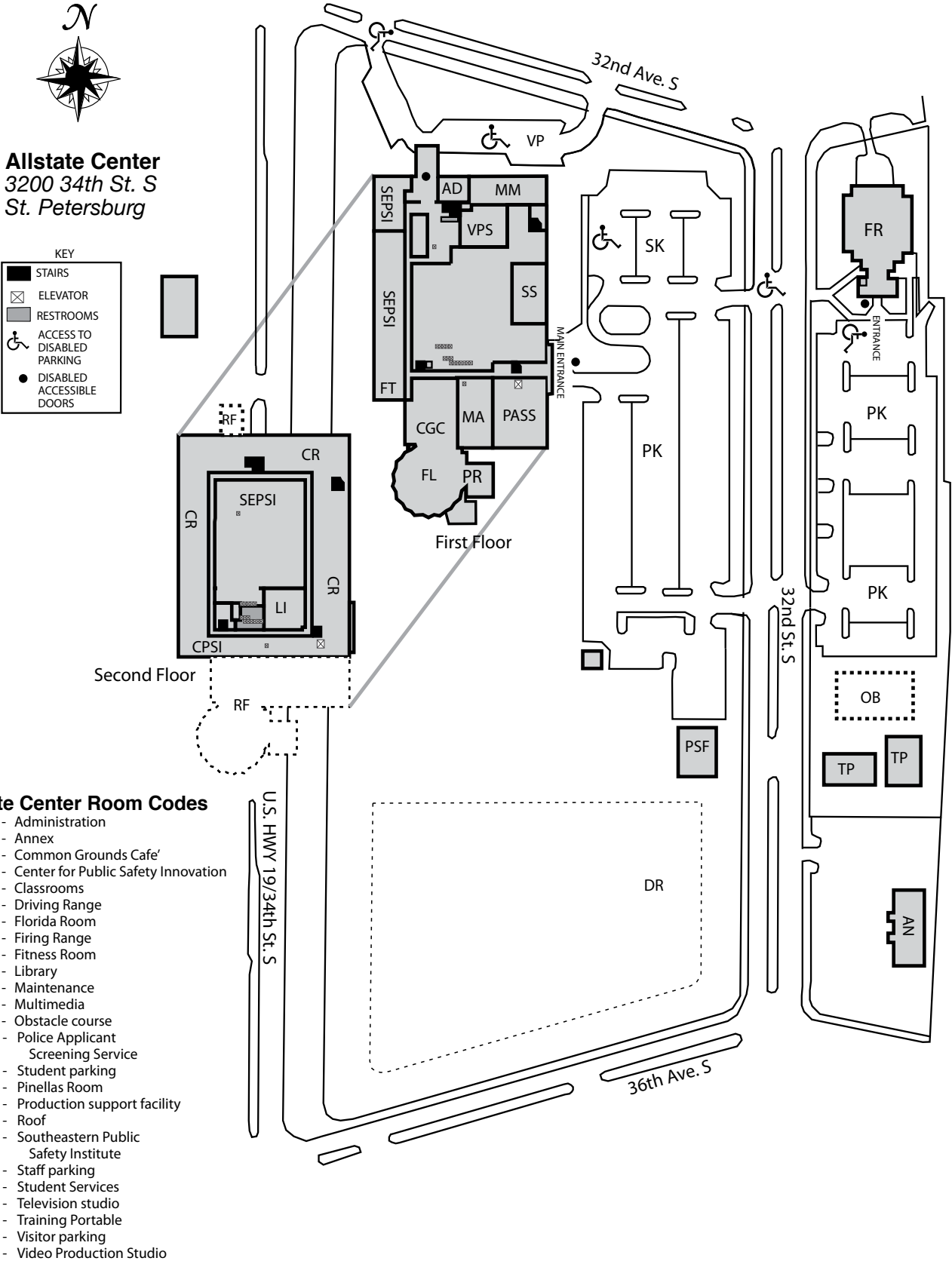
Cecil B. Keene, Sr. Student Achievement Center
1048 22nd St. S
St. Petersburg, FL 33712

10. Allstate Center
3200 34th St. S
St. Petersburg, FL 33711



St. Petersburg College

ALLSTATE CENTER



St. Petersburg College

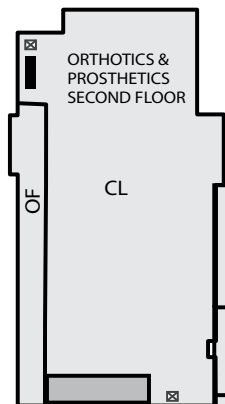
CARUTH HEALTH EDUCATION CENTER

Caruth Health Education Center
7200 66th St. N
Pinellas Park

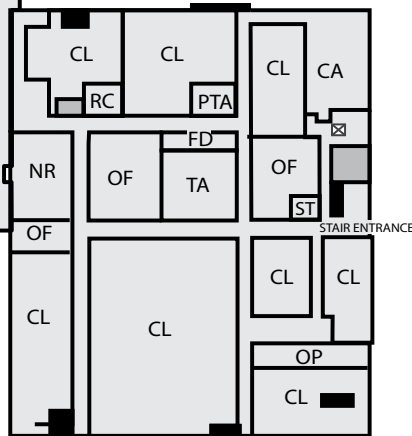


KEY

- STAIRS
- ELEVATOR
- RESTROOMS
- ACCESS TO DISABLED PARKING
- DISABLED ACCESSIBLE DOORS



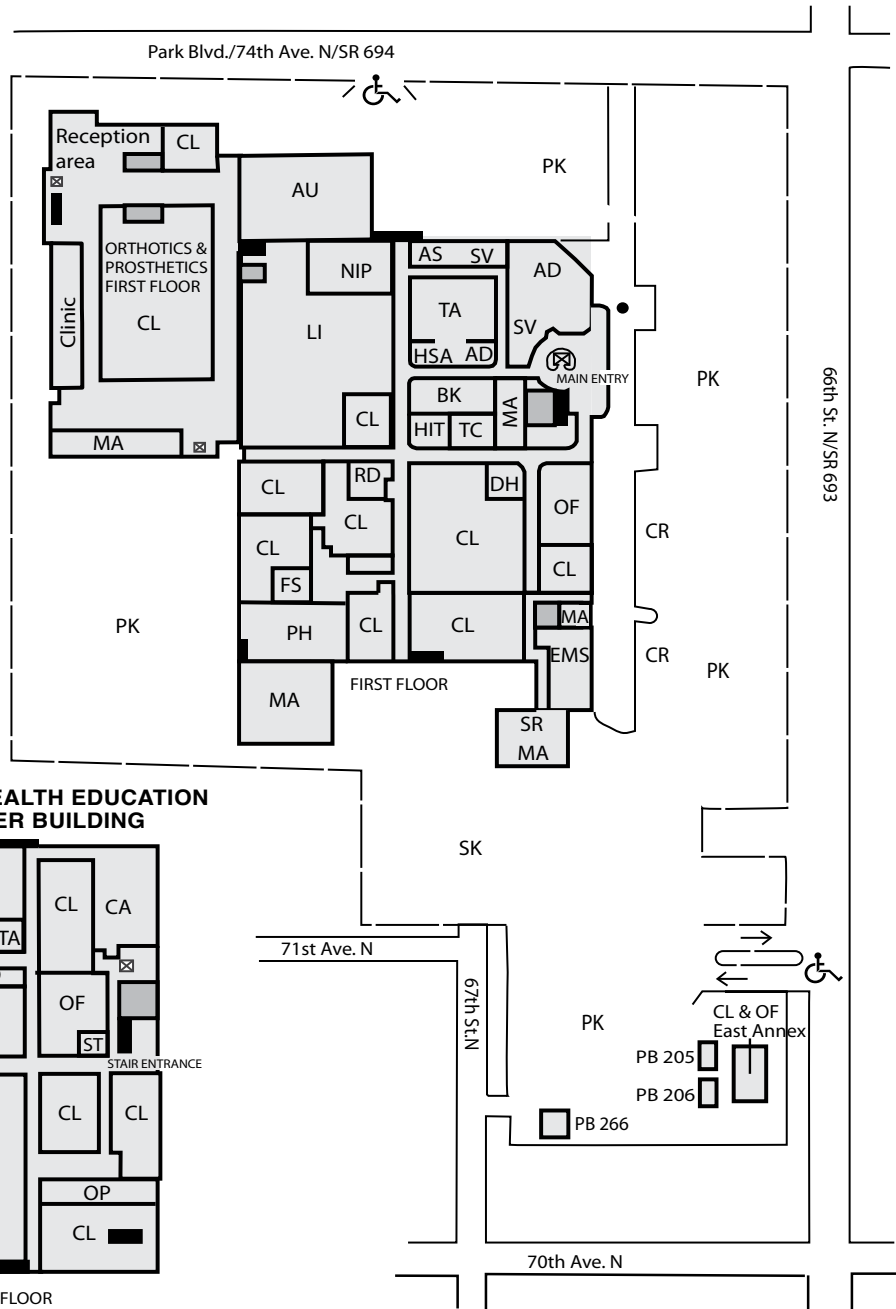
CARUTH HEALTH EDUCATION CENTER BUILDING



SECOND FLOOR

Caruth Health Education Center Room Codes

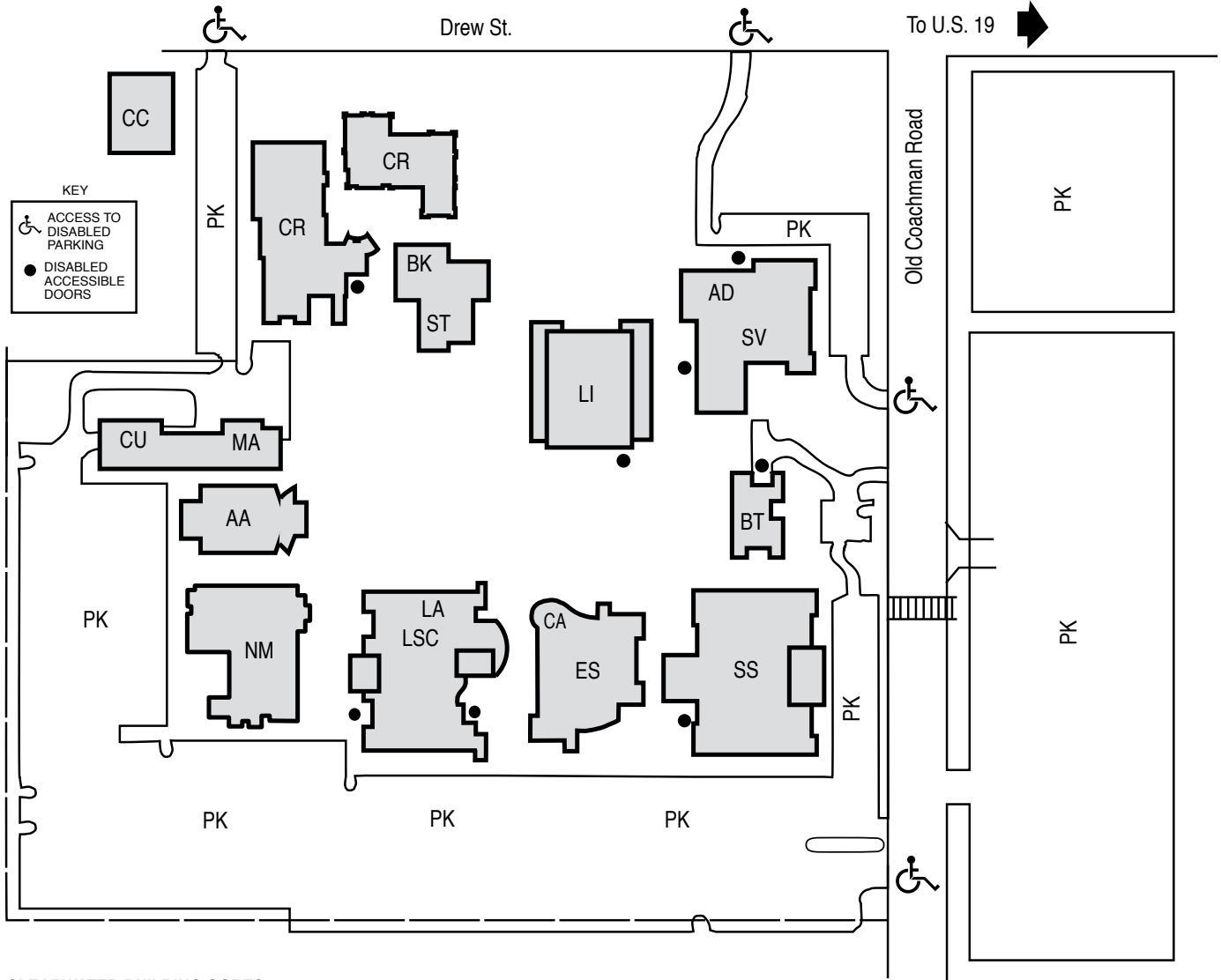
- | | | |
|--------------------------------------|------------------------------------|----------------------------------|
| AD - Administration | LI - Library | SK - Staff parking |
| AS - Accessibility Services | MA - Maintenance | ST - Student Life and Leadership |
| AU - Auditorium | NIP - New Initiative Program | SV - Student Services |
| BK - Bookstore | NR - Nursing | TA - Teaching Auditorium |
| CA - Cafeteria | OF - Offices | |
| CL - Classrooms | TC - Testing Center | |
| CR - Clinic Parking | PB - Portables 205,206 & 266 | |
| DH - Dental Hygiene | PH - Physical Plant/Receiving | |
| EMS - Emergency Medical Services | PK - Student parking | |
| FS - Funeral Services | PTA - Physical Therapist Assistant | |
| HIT - Health Information Technology | RC - Respiratory Therapy | |
| HSA - Health Services Administration | RD - Radiography | |



St. Petersburg College

CLEARWATER CAMPUS

Clearwater Campus
2465 Drew St.
Clearwater



CLEARWATER BUILDING CODES

- | | |
|---|---|
| AA - Arts Auditorium | LA - Language Arts |
| AD - Administration | LI - Michael M. Bennett Library |
| BK - Bookstore | LSC - Learning Support Commons |
| BT - Business Technologies | MA - Maintenance |
| CA - Cafe/Food services | NM - Natural Science, Math and College of Education |
| CC - Collaborative Center for Emerging Technologies | PK - Student parking |
| CR - Crossroads | SS - Social Sciences |
| CU - Central Utilities | ST - Student Life and Leadership |
| ES - Ethics and Social Sciences | SV - Student Services |

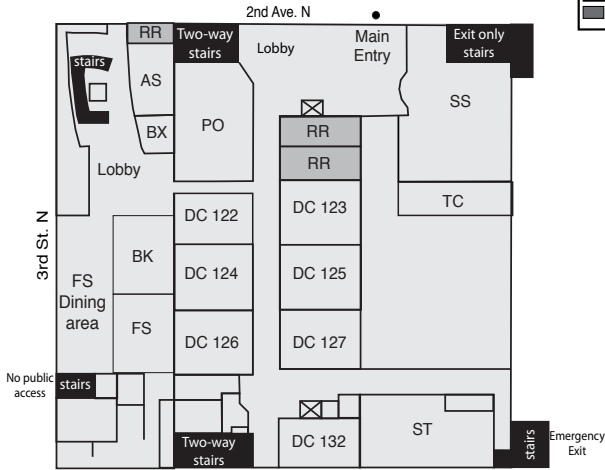
St. Petersburg College DOWNTOWN

SPC Downtown
244 Second Ave. N
St. Petersburg

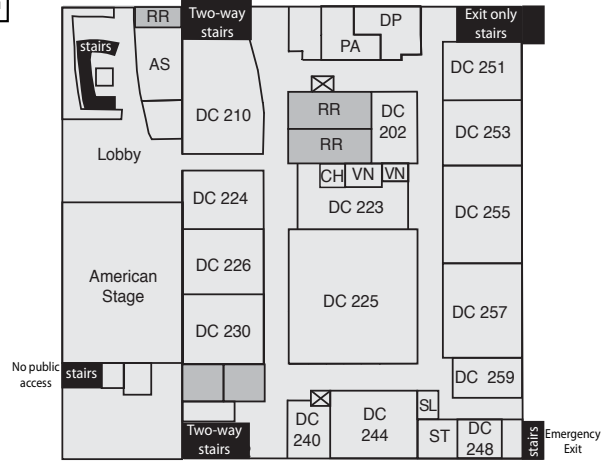


KEY

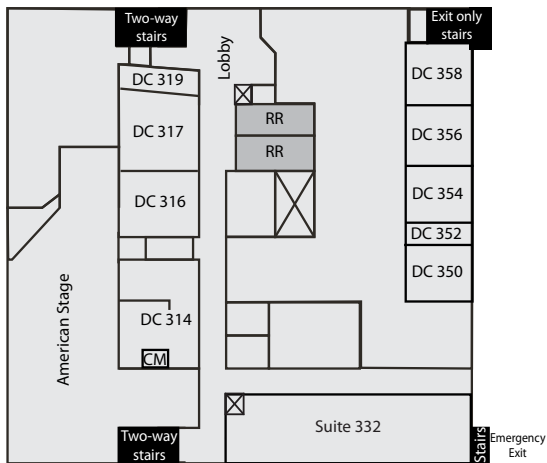
- RESTROOMS
- ACCESS TO DISABLED PARKING
- DISABLED ACCESSIBLE DOORS
- ELEVATOR
- STAIRS
- CONSTRUCTION



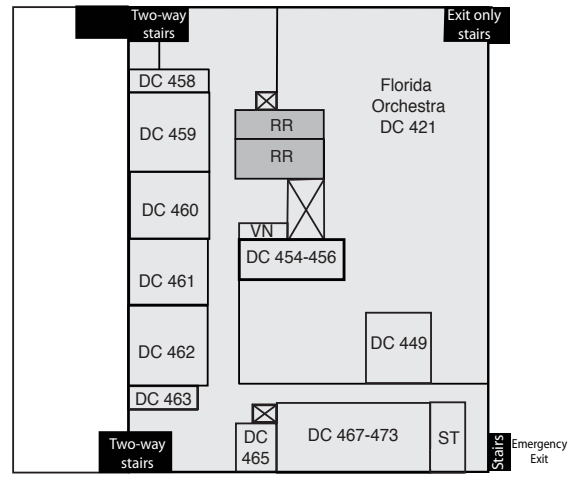
FIRST FLOOR



SECOND FLOOR



THIRD FLOOR



FOURTH FLOOR

SPC Downtown Room Codes

Classrooms

- DC 122-127 - Classrooms
- DC 224 - Classroom
- DC 226, 230 - Classrooms
- DC 251 - Classroom
- DC 253 - Classroom
- DC 257 - Interactive classroom
- DC 316-317 - Classrooms
- DC 459-462 - Classrooms

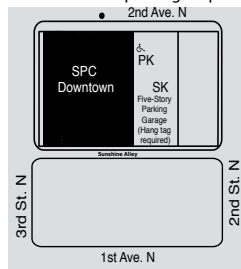
Numbered rooms

- DC 132 - GED Program
- DC 202 - Conference room
- DC 210 - Community room
- DC 223 - Student lounge
- DC 225 - Student Life & Leadership, Student Government, Outreach
- DC 240 - Science Prep
- DC 244 - Science Lab
- DC 248 - Staff offices
- DC 255 - Learning Support Commons Open Lab
- DC 259 - Staff offices
- DC 314 - Learning Support Commons Tutoring
- DC 319 - Faculty offices
- Suite 332 - American Stage offices
- DC 352 - Offices
- DC 350, 354, 356 & 358 - Classrooms
- DC 421 - Florida Orchestra
- DC 449 - Staff Wellness Center
- DC 454-456 - Palladium offices
- DC 458 & 463 - Science Prep
- DC 459 & 462 - Science Labs
- DC 465 - TRS
- DC 467-473 - Faculty Offices

Un-numbered rooms

- AS - American Stage offices
- BK - Book store
- BX - Box office
- DP - Downtown Partnership
- CH - Change machine
- CM - Copy machine
- FS - Food service (cafe)
- PA - Pier Aquarium office
- PK - Student parking
- PO - Provost Office
- RR - Restroom
- SK - Staff parking
- SL - Student lockers
- SS - Student Services: Admissions, Advising, Business office, Career Services, Disability Resources, Financial Aid, Registration, Veterans Services
- ST - Storage
- TC - Testing Center
- VN - Vending

SPC Downtown parking map



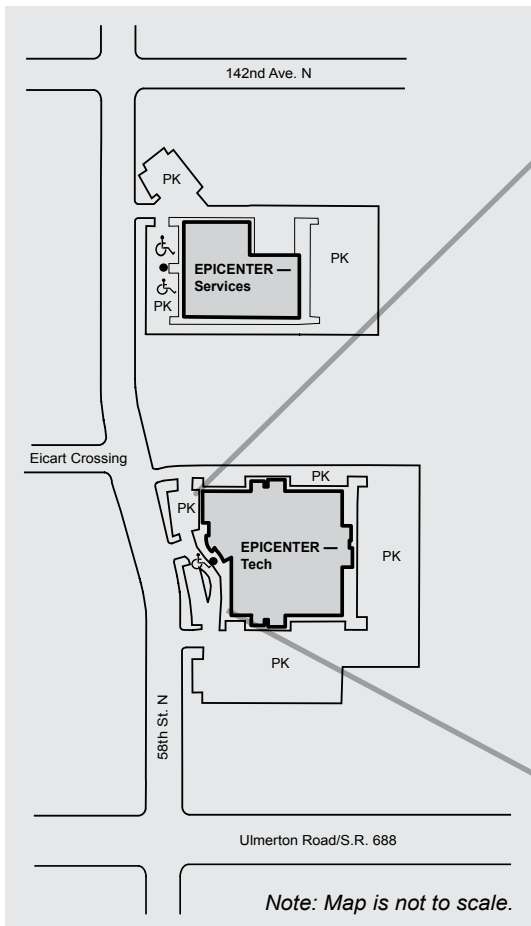
St. Petersburg College EPICENTER TECH

SPC EpiCenter Tech Classroom locations

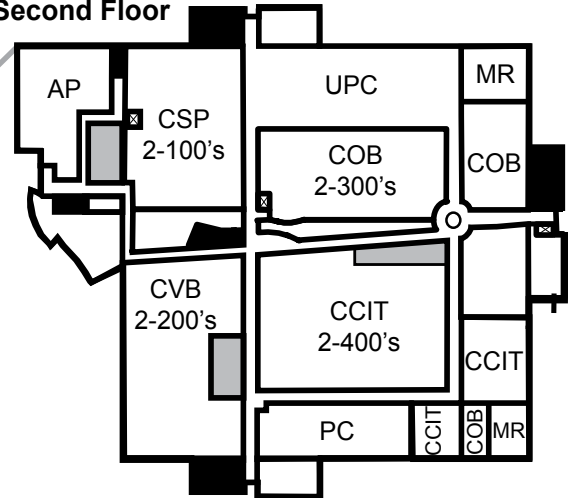


EpiCenter Tech
13805 58th St. N, Clearwater

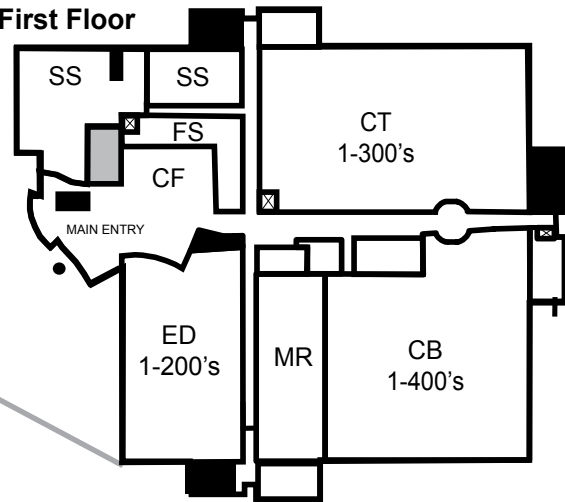
EpiCenter — Services
14025 58th St. N, Clearwater



Second Floor



First Floor



EpiCenter Room Codes

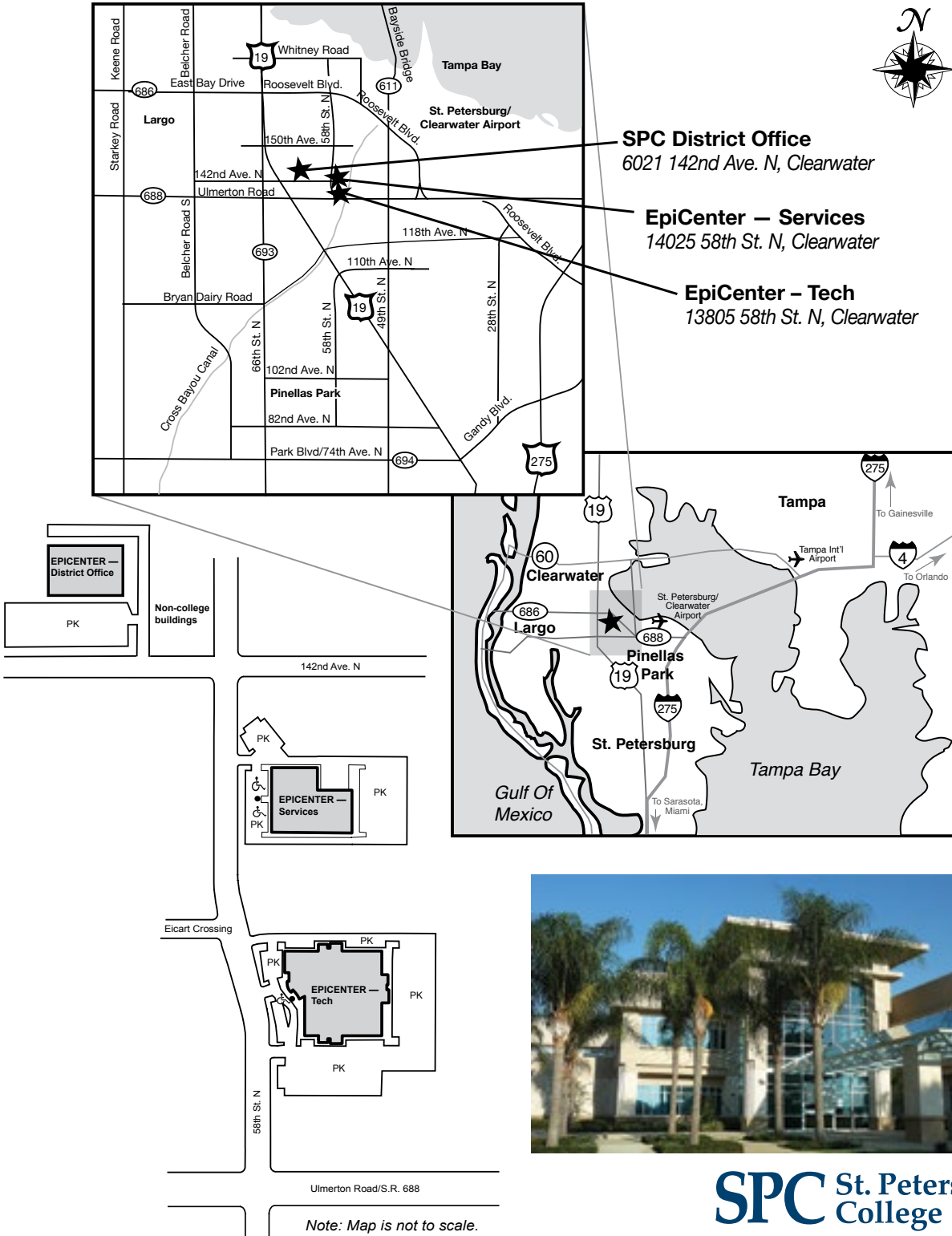
- AP - Academic Programs
- ASA - Academic & Student Affairs
- BP - Baccalaureate Programs
- CB - Collaborative Labs
- CCIT - College of Computer and Information Technology
- CF - Cafeteria
- COB - College of Business
- CSP- CareerSource Pinellas (formerly WorkNet Pinellas)
- CT - Corporate Training

- CVB- Pinellas County Convention & Visitors Bureau
- ED - Pinellas County Economic Development
- FS - Food service
- MR - Meeting rooms
- PC - Pinellas County
- SS - Student Services
- UPC - University Partnership Center



SPC District Office

Directions to the site

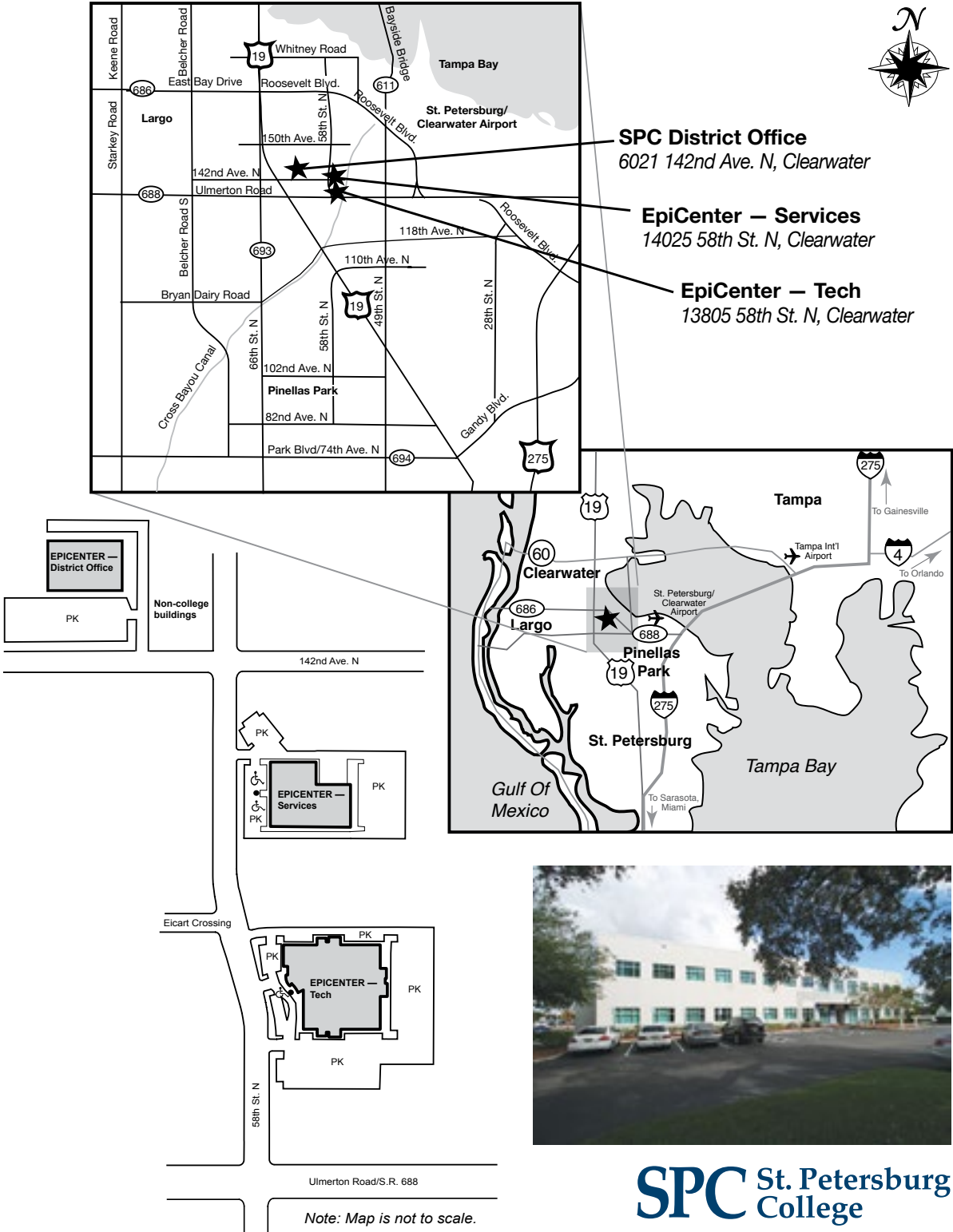


Note: Map is not to scale.



SPC EpiCenter – Services

Directions to the site



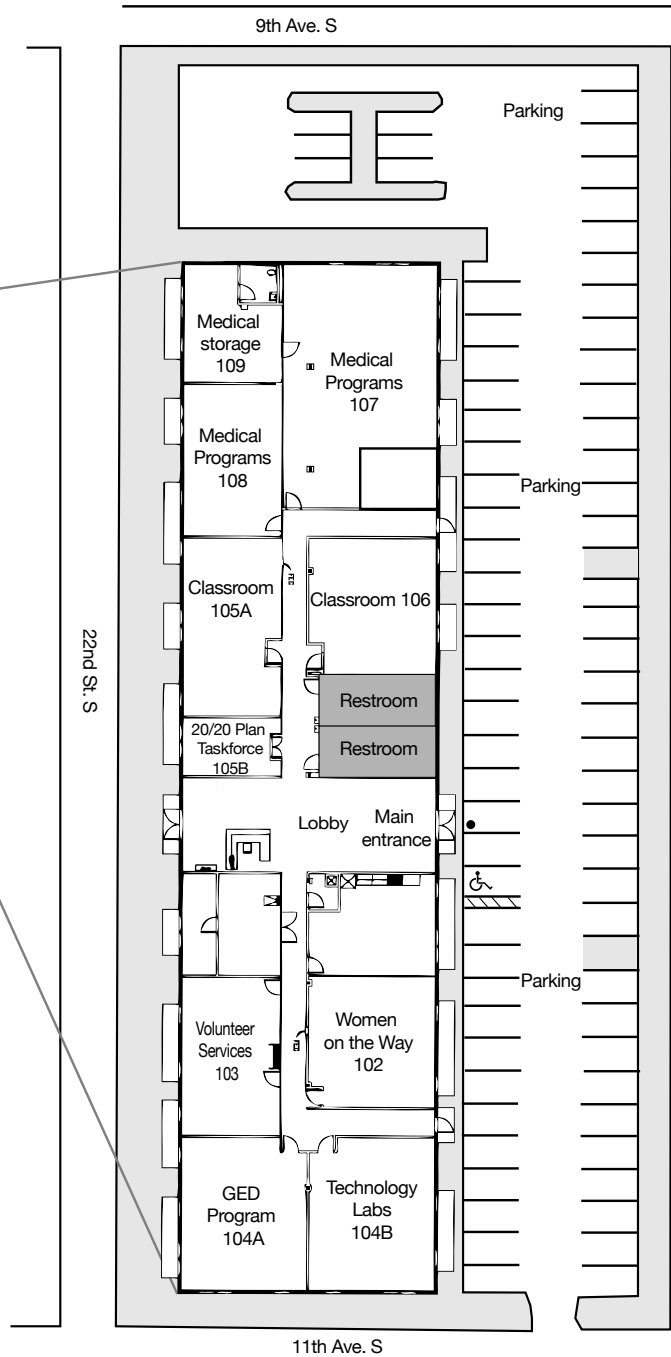
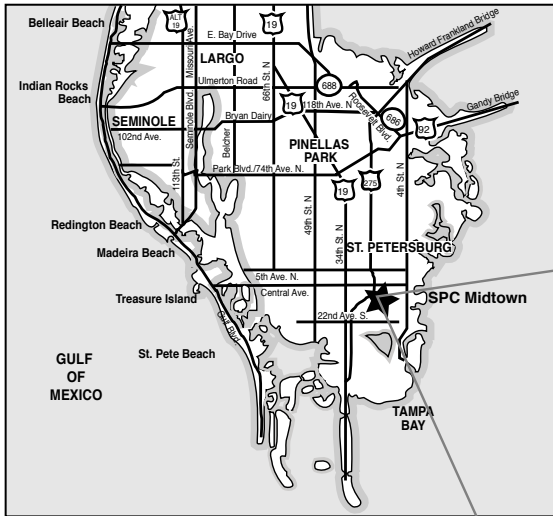
St. Petersburg College MIDTOWN

Cecil B. Keene, Sr. Student Achievement Center
 1048 22nd St. S
 St. Petersburg



KEY

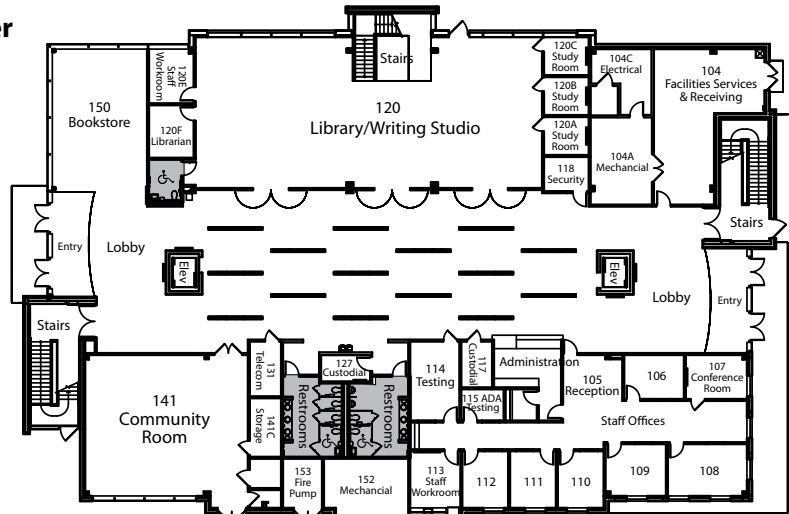
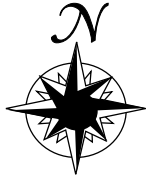
- ACCESS TO DISABLED PARKING
- DISABLED ACCESSIBLE DOORS
- RESTROOMS



St. Petersburg College MIDTOWN

Douglas L. Jamerson, Jr. Midtown Center

1300 22nd St. S
St. Petersburg

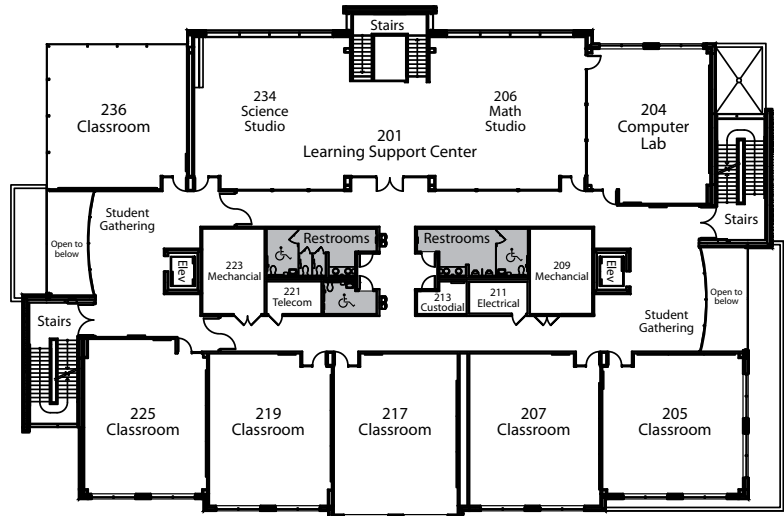


MIDTOWN CENTER - FIRST FLOOR

SPC Midtown Room Codes

- MT 104 - Facilities Services & Receiving
- MT 105 - Reception
- MT 106, 108-112 - Staff Offices
- MT 107 - Conference Room
- MT 113 - Staff Workroom
- MT 114 - Testing
- MT 115 - ADA Testing
- MT 118 - Security
- MT 120 - Library/Writing Studio
- MT 120A - Study Room
- MT 120B - Study Room
- MT 120C - Study Room
- MT 141 - Community Room
- MT 150 - Bookstore

- MT 201 - Learning Support Center
- MT 204 - Computer Lab
- MT 205 - Classroom
- MT 206 - Math Studio
- MT 207 - Classroom
- MT 217 - Classroom
- MT 219 - Classroom
- MT 225 - Classroom
- MT 234 - Science Studio
- MT 236 - Classroom



MIDTOWN CENTER - SECOND FLOOR

- MT 305 - Reception
- MT 306 - Conference Room
- MT 307-317 - Faculty Offices
- MT 318 - Adjunct Faculty
- MT 320 - Technology Resources
- MT 321 - Staff Workroom
- MT 322 - Computer Lab
- MT 324 - Biology Lab
- MT 328 - Science Prep
- MT 330 - Physical Science Lab
- MT 332 - Classroom
- MT 339 - Student Workroom
- MT 339B - Student Government



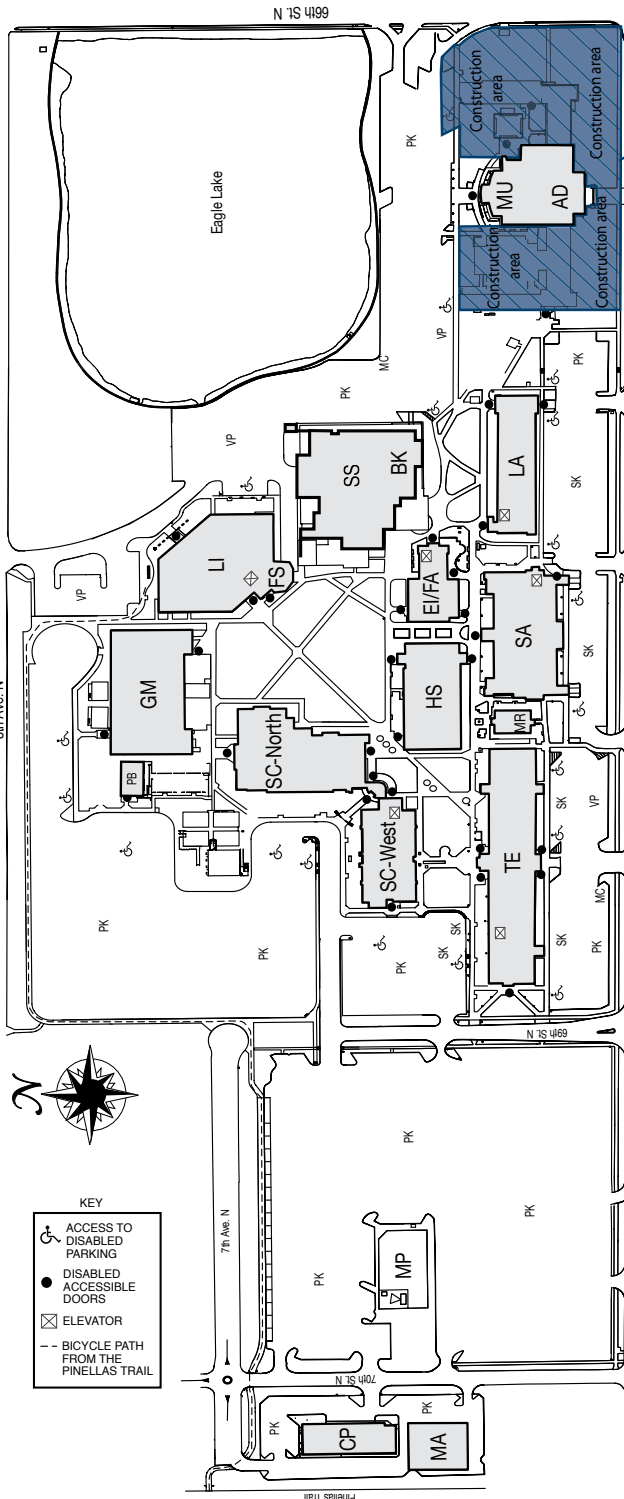
MIDTOWN CENTER - THIRD FLOOR

St. Petersburg College

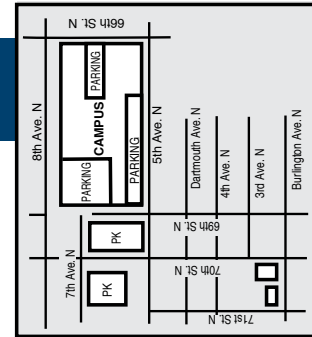
ST. PETERSBURG/GIBBS CAMPUS

St. Petersburg/Gibbs Campus

St. Petersburg/Gibbs Campus
6605 Fifth Ave. N, St. Petersburg

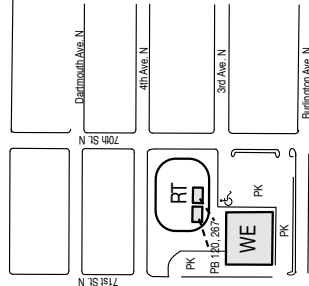


New Student Success Center under construction. All services have been moved to the TE building.



ST. PETERSBURG/GIBBS CAMPUS BUILDING CODES

- AD - ADMINISTRATION**
The Administration Building is under construction and will become the new Student Success Center. The Provost office has been moved to SC 231. All other administrative departments have been moved to either the Technical Building (TE) or the Social Arts Building (SA). Please see the list of departments for each building.
- EI - ETHICS**
Applied Ethics
Music
- GM - GYMNASIUM**
- HS - HUMANITIES**
Humanities and Fine Arts
- LA - LANGUAGE ARTS**
Communications
- LI - LIBRARY**
Café
Library
Writing Studio
- MA - MAINTENANCE**
Facilities/Receiving
- MC - MUSIC CENTER**
- MR - MIRA**
Music Industry/Recording Arts Studio
- PB - PORTABLE 201**
GED Program
- RT - RUNNING TRACK**
- SA - SOCIAL ARTS**
Career Services (Rm 137)
CROP College Reach Out Program (Rm 101)
International Programs/International Student Center (Rm 111)
Mathematics
Social and Behavioral Science
Special Programs (Rm 101)
Student Support Services (Rm 101)
Veteran's Services (Rm 133)
WOW Women on the Way (Rm 124)
- SC - NATURAL SCIENCE**
Planetarium
Provost Office (Rm 231)
Science
- SS - STUDENT SERVICES**
Bookstore
St. Petersburg Collegiate High School
Student Life and Leadership
- TE - TECHNICAL BUILDING**
Accessibility Services (Rm 128)
Associate Provost (Rm 128)
Admissions and Registration (Rm 100)
Business Office (Rm 128)
Career and Academic Advising (Rm 100)
College of Business
College of Computer and Information Technology
College of Education
Financial Assistance (Rm 101)
Learning Support Commons (Rm 200)
Security (Rm 210)
Testing (Rm 103)
- WE - WELLNESS CENTER**



St. Petersburg College SEMINOLE CAMPUS

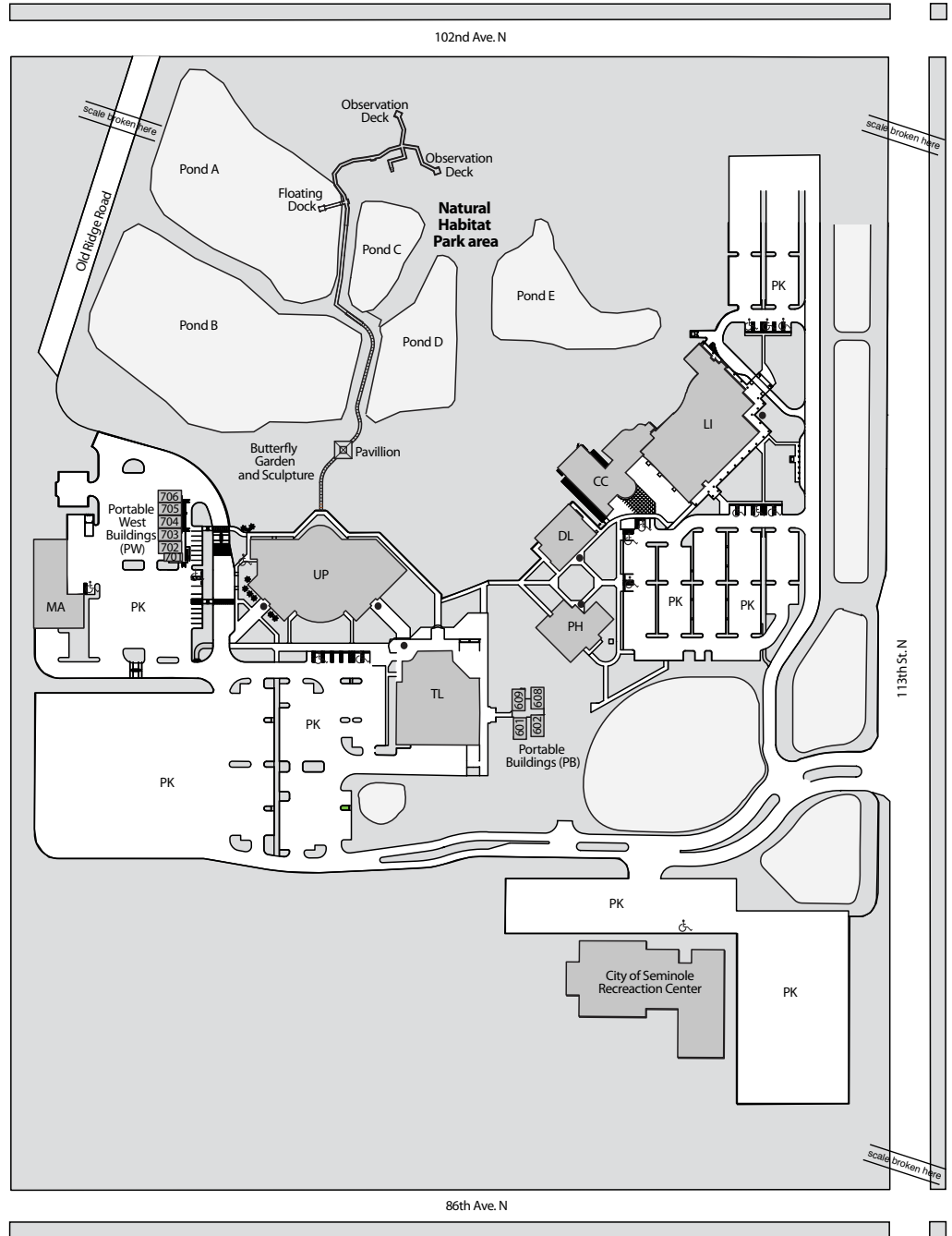
Seminole Campus

9200 113th St. N
Seminole



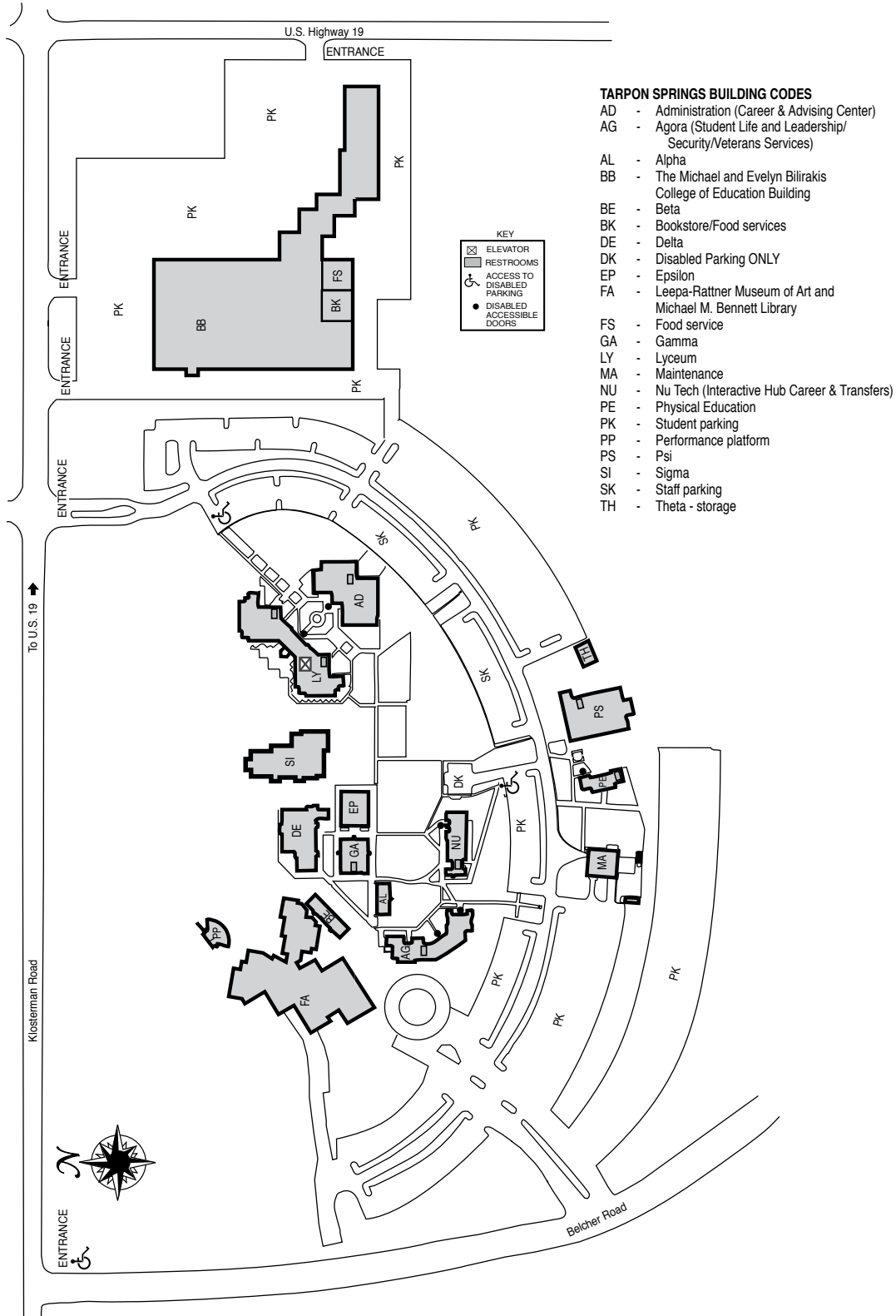
Seminole Campus Room Codes

- CC - Library Annex - Conference Center
- DL - Dental building
- LI - Dennis L. Jones Community Library at Seminole Campus
- MA - Maintenance
- PB - Portables
- PH - Pharmacy
- PK - Parking
- PW - Portables West
- PB 602 - GED Classroom
- PB 608 - Classroom
- PB 609 - Faculty offices/Restrooms
- PW 701 - Restrooms and Drinking fountains
- PW 702 - Faculty offices
- PW 703 - Classroom
- PW 704 - Classroom
- PW 705 - Classroom
- PW 706 - Classroom
- TL - Technology Learning
- UP - C.W. Bill Young University Partnership Center building
Veteran Services



St. Petersburg College TARPON SPRINGS CAMPUS

Tarpon Springs Campus
600 Klosterman Road
Tarpon Springs



SPC Veterinary Technology Center
 12376 Ulmerton Rd.
 Largo

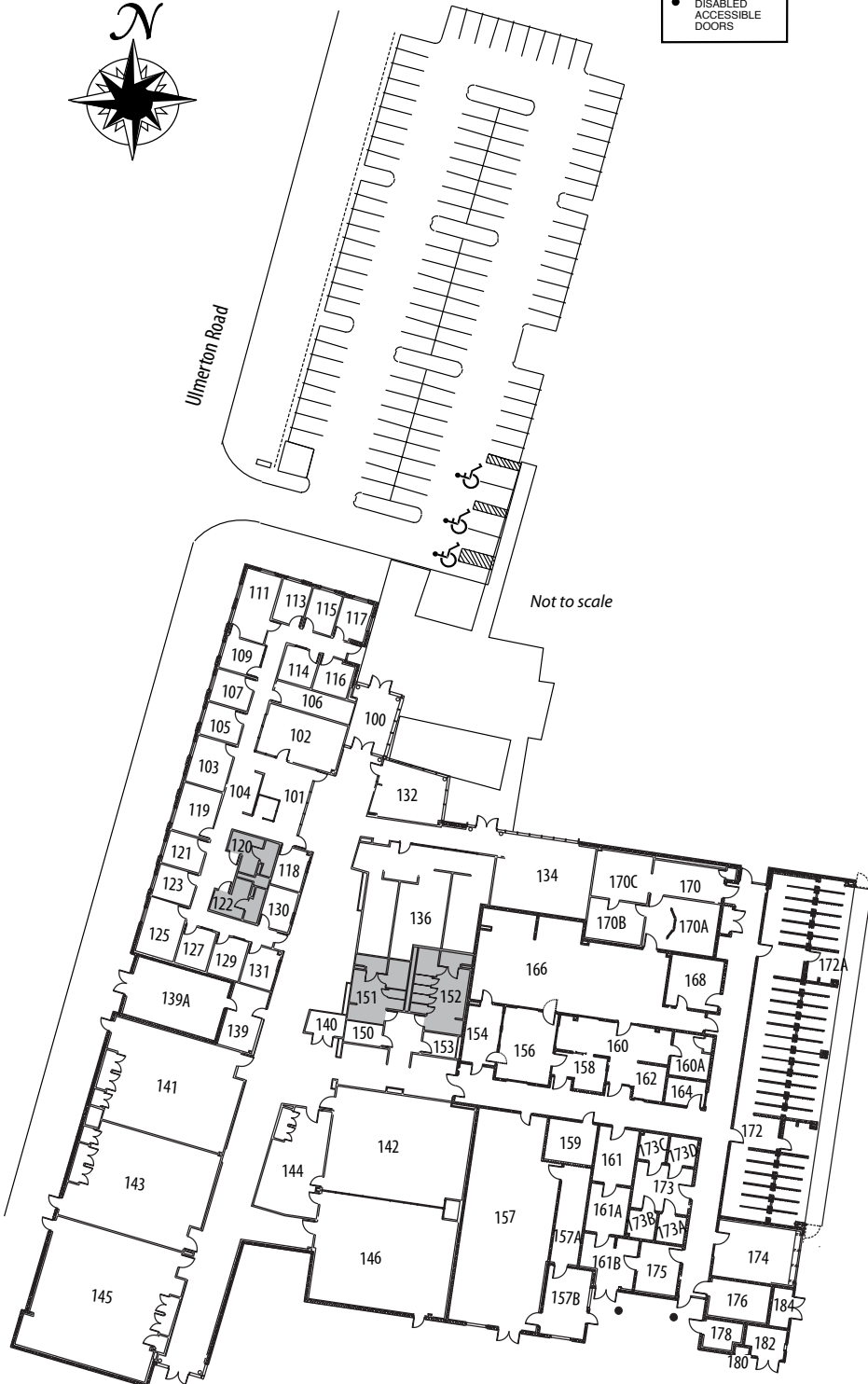


Ulmerton Road

KEY

- RESTROOMS
- ♿ ACCESS TO DISABLED PARKING
- DISABLED ACCESSIBLE DOORS

Not to scale



SPC Veterinary Technology Center

Room Codes

- 100 -119 - TBA
- 120, 122 - Restrooms
- 121-132 - TBA
- 134 - Student Work
- 136-139 - TBA
- 139A - Mechanical
- 140 - Electrical
- 141, 143 - Computer Lab
- 142 - Anatomy Lab
- 144 - Lab Storage
- 145 - Collaborative Lab
- 146 - Pathology Lab
- 150 - Custodial
- 151-152 - Restrooms
- 153 - Computer
- 154 - Scrub
- 156 - Surgery
- 157 - Mechanical
- 157A - Electrical
- 157B - Generator
- 158 - Recovery
- 159 - Telecommunications
- 160 - Control
- 160A - Pharmacy
- 161 - Food Prep
- 161A - Food Storage
- 161B - Storage
- 162 - Bath
- 164 - Avary
- 166 - Animal Procedures Lab
- 168 - Lab Prep
- 170 - Radiology
- 172 - Dog Ward
- 173 - Lab Animals
- 174 - Cat Ward
- 175 - Isolation
- 176 - Custodial
- 178, 182 - Storage
- 180 - Oxygen
- 184 - Mechanical

University Partnership Center

Getting your bachelor's or graduate degree has never been more convenient

The University Partnership Center at St. Petersburg College offers a variety of bachelor's and graduate degrees from fully accredited colleges and universities.

Business Related

Bachelor's Degrees

Aviation Business Administration
Business Administration
Business Administration
• Accounting
• Management
• Marketing
Economics
Hospitality Management
Logistics Management
Technical Management

Graduate Degrees

Acquisition and Contract Management
Business Administration
Business Administration
Real Estate
Business Administration in Aviation
Healthcare MBA
Human Resource Management
International Business
Leadership
Logistics Management
Logistics & Supply Chain Management
Management
Management Information Systems
Management/Risk Management Insurance
Management
• Transportation Management
Occupational Safety Management
Project Management
Real Estate

Education Related

Bachelor's Degrees

Visual Disabilities Education

Graduate Degrees

Adult Education
Certificate in Mathematics
Curriculum & Instruction
• Curriculum Development
Doctor of Philosophy in Leadership & Education
• Higher Education Administration
Education in Instructional Technology
Educational Leadership Administration
Educational Leadership Development
Program Development
• Educational Innovation
Special Education
• Autism Endorsement
Visual Disabilities Education

Technical or Technology Related

Bachelor's Degrees

Aeronautics
Aviation Security
Computer Science
Engineering Technology
• Electrical Engineering
Information Technology

Graduate Degrees

Aeronautics
Computer Engineering
• Network Security
Engineering Management
Systems Engineering

Professional Related

Bachelor's Degrees

Criminal Justice
Legal Studies

Graduate Degrees

Administration
Biotechnology
Criminology/Criminal Justice Studies
Criminal Justice Administration
Library & Information Science
Mass Communications
• Global Strategic Communications
Public Administration

General or Interdisciplinary

Bachelor's Degrees

Psychology

Medical Professions and Health Related

Bachelor's Degrees

Health Science
Microbiology and Cell Science

Graduate Degrees

Doctor of Chiropractic
Doctor of Dentistry-Residency & Continuing Education
Doctor of Nursing Practice
Doctor of Pharmacy
Health Science
Health Services Administration & dual degree in
Health Services Administration & Public Health
Nursing
• Clinical Nurse Leader
• Forensic Nursing
• Nursing Education
• Specialized Populations
Nursing Education
Physician Assistant



Admission to bachelor's degree programs offered through the University Partnership Center requires an A.A. or A.S. degree, or approximately 60 hours of college credit.

SPC St. Petersburg College

UNIVERSITY PARTNERSHIP CENTER

727-394-6200 | upc@spcollege.edu | <http://www.spcollege.edu/upc>

University Partnership Center | St Petersburg College | PO Box 13489 | St Petersburg FL 33733-3489

St. Petersburg College is an Equal Access/Equal Opportunity institution.

CLK-035-09659_6-19-17